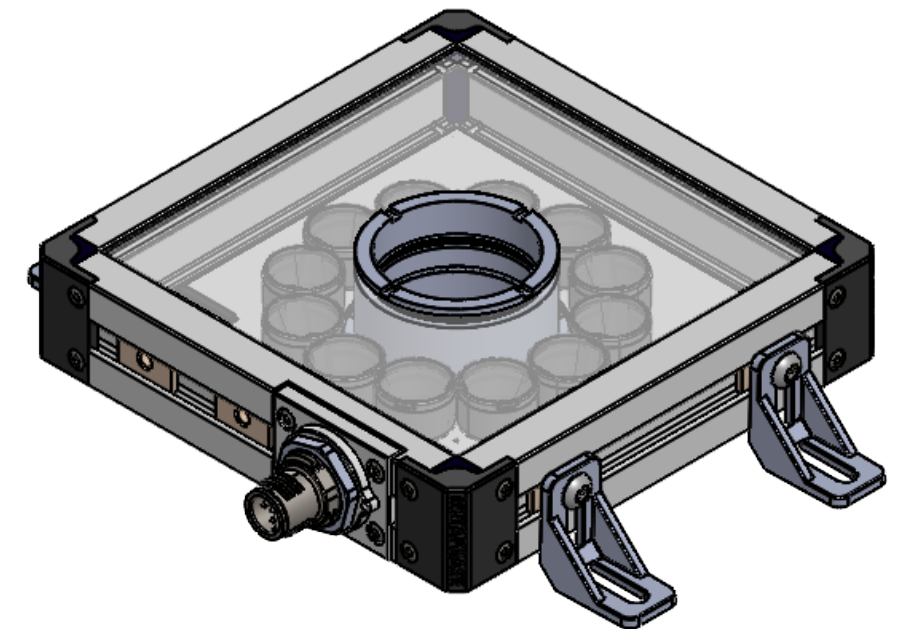


REVISIONS			
REV.	DESCRIPTION	DATE	APPROVED
A	INITIAL RELEASE	4/13/2025	KYS



Metaphase Technologies, Inc. 200 Rittenhouse Circle, Unit 7, Bristol, PA. 19007 215-639-8699 Fax 215-639-0977

QUANTITY: AS PER ORDER

MATERIAL:

FINISH:

TREATMENT: N/A

TOLERANCE/FINISH
UNLESS OTHERWISE SPECIFIED

INCHES [MM]				125V/RMS [RA3.2um]
X	.X	.XX	.XXX	
[±.76]	±.030 [±.25]	±.010 [±.13]	±.005	ANGLES ±1°

THIS DOCUMENT IS THE PROPERTY OF
METAPHASE TECHNOLOGIES, INC. WHOM MAY
LOAN IT, SUBJECT TO RETURN UPON DEMAND.
IT INCLUDES CONFIDENTIAL & PROPRIETARY
INFORMATION WHICH MAY NOT BE DISCLOSED
TO ANY THIRD PARTY, AND/ OR USED FOR
ANY PURPOSE CONTRARY TO IT'S INTENDED
USE, WITHOUT THE EXPRESSED PRIOR WRITTEN
CONSENT OF **METAPHASE TECHNOLOGIES, INC.**



TITLE
ASSY, TX RING LIGHT

USED ON

SIZE	DRAWING NUMBER	REV
B	TXRL1-0404	A
SCALE 1:1.5		SHEET 1 OF 2

Approval Signature

/ /
Date