

1 2 3 4 5 6 7 8

D

C

B

A

D

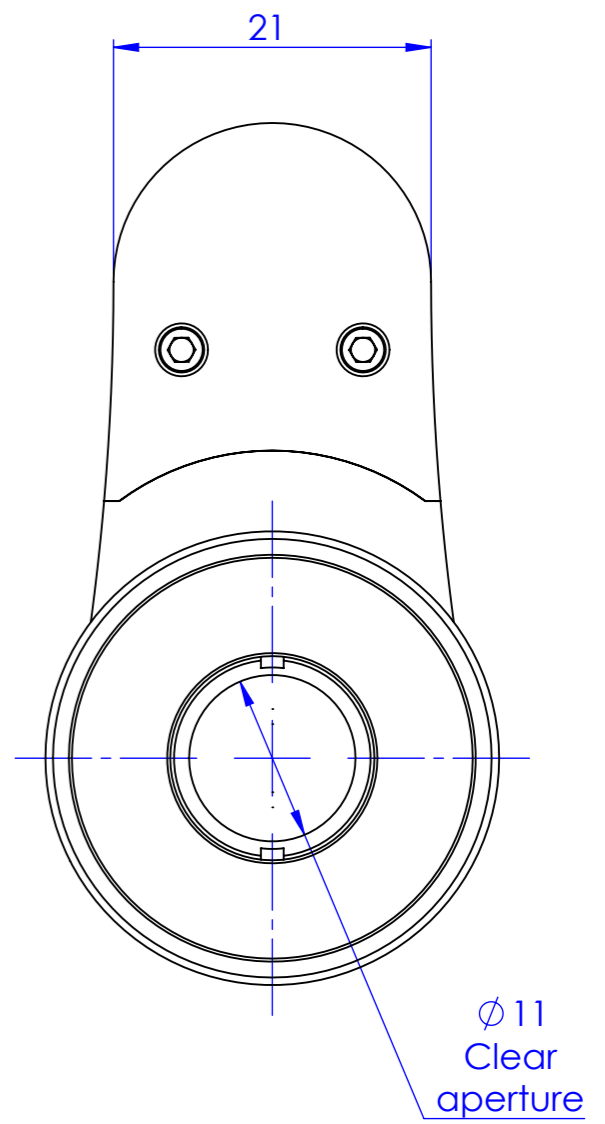
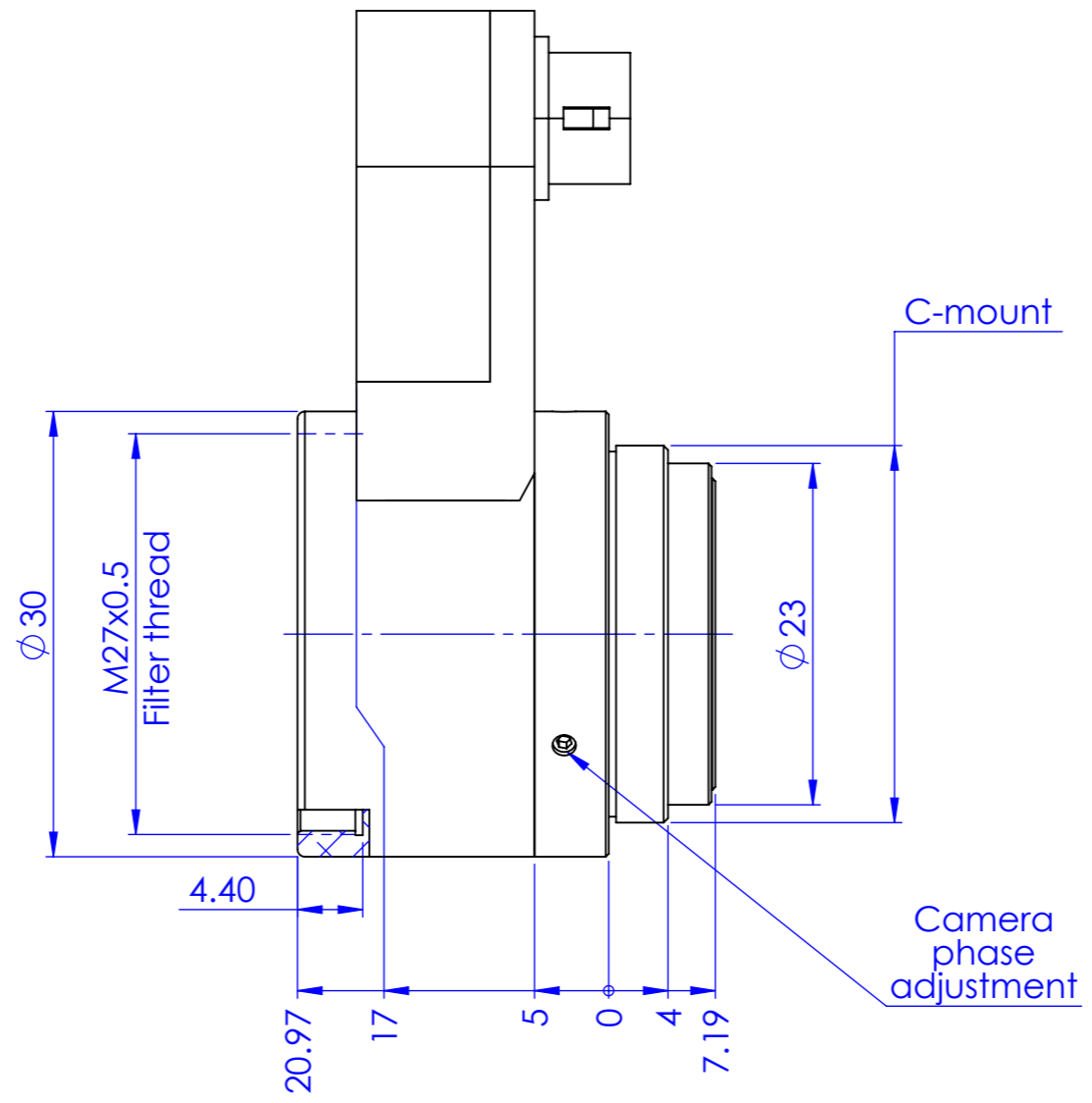
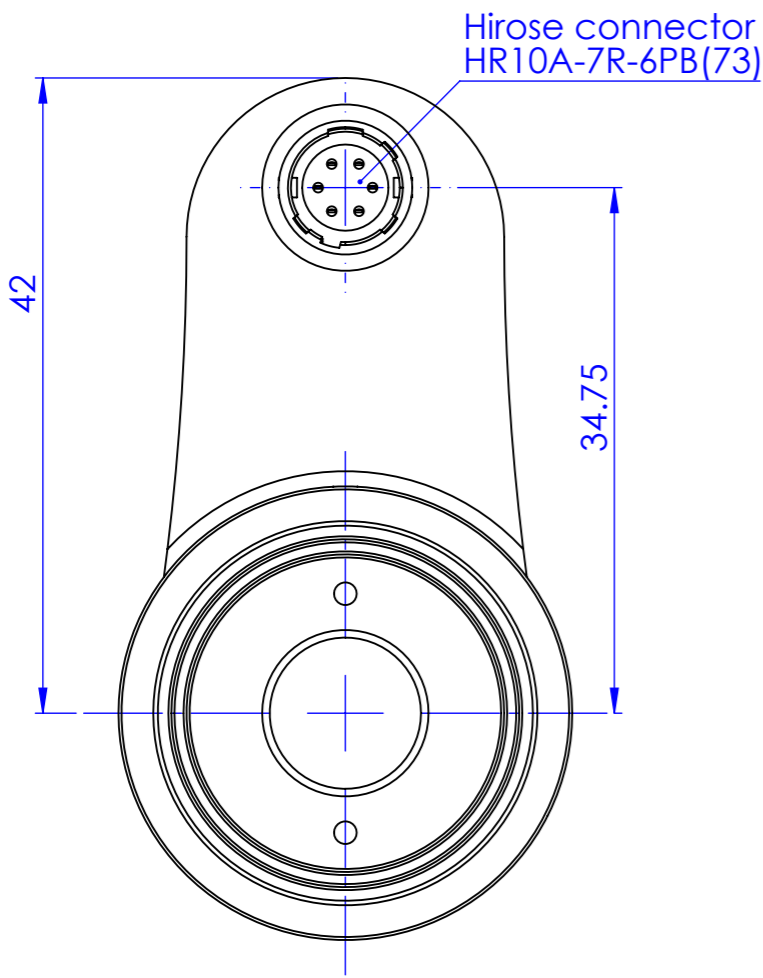
C

B

A

1 2 3 4 5 6 7 8

0 1 2 3 4 5 6 7 8 9 10



Material		N.A.		Mass		48 g		Scale		2:1	
Surface treatment				Part No.		CO30896					
Geometrical tolerance (ISO 2768-2)								Class		K	
Linear tolerance (ISO 2768-2)								Class		m	
0.5	>3	>6	>30	>120	>400	>1000	>2000	Undimensioned bevels	0.5x45°		
±3	6	30	120	±400	±1000	±2000	±4000	Undimensioned radii	R 0.5		
±0.1	±0.1	±0.2	±0.3	±0.5	±0.8	±1.2	±2	Description		EL5MP2556	
<p>OPTO ENGINEERING</p>		Date		Name		Drawing No.		Sheet			
		Designed 13/05/2021		Ccharly		DP 30896-A		1/1			
		Drawn 09/06/2022		Rizzotto		<i>Secret and confidential - All rights reserved - No copy, dissemination or circulation is allowed unless specifically authorized in writing by OPTO ENGINEERING S.p.A. - Any violation shall be legally prosecuted.</i>					
Checked 09/06/2022		Rizzotto									
all dimensions are in mm OPTO ENGINEERING S.p.A. - Mantova, Italy - Tel. +39 0376699111 - www.opto-e.com											