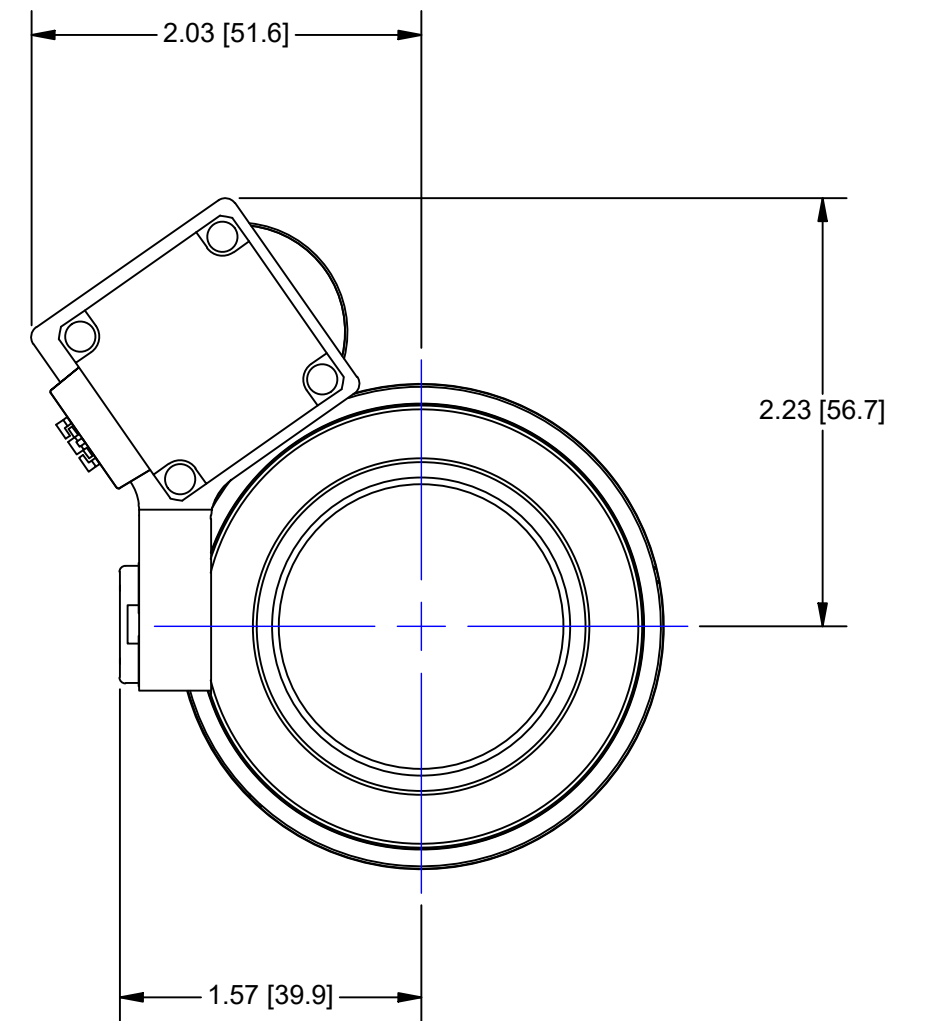
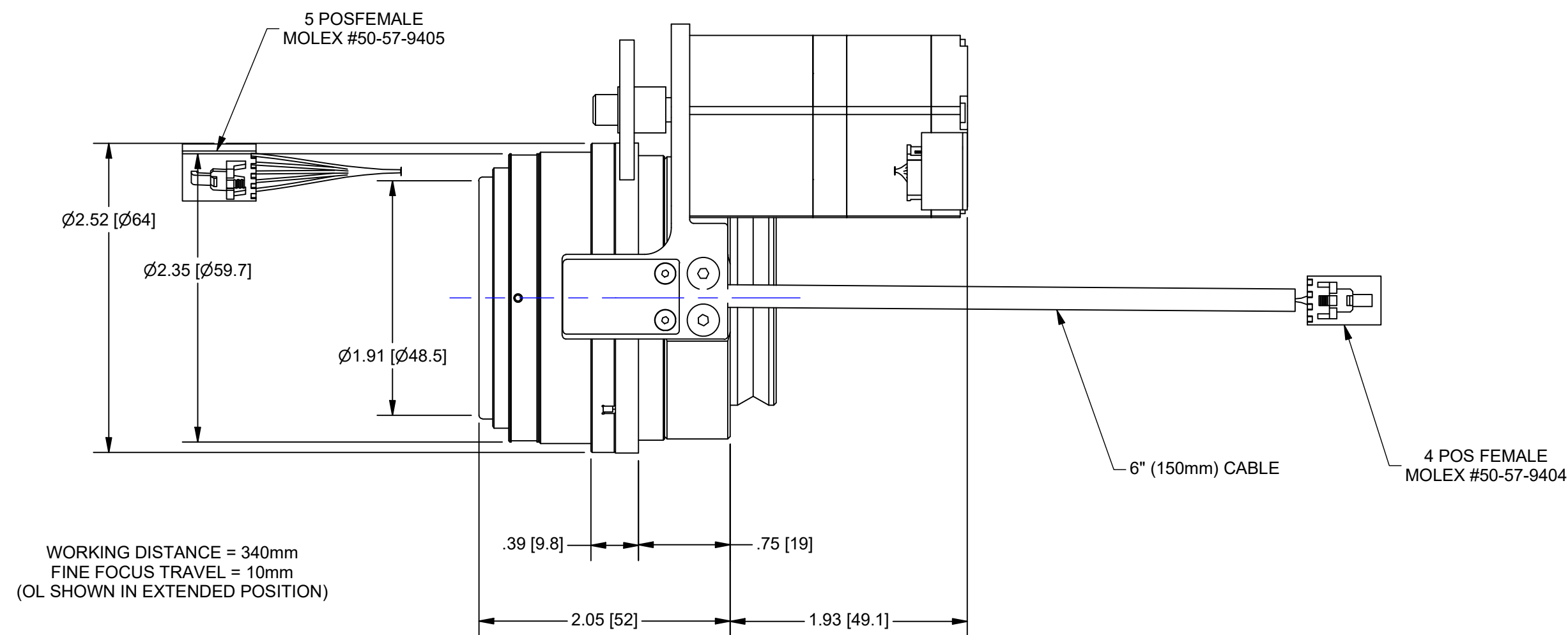


SCALE 1:1



5φ MOTOR AND HALL EFFECT CABLE INFORMATION:

- FOCUS / HE CABLE LENGTH = 0.15m
- USE NAVITAR #1-40170 (1.8m), 1-40289 (1.2m), 1-40290 (0.6m) TO CONNECT TO NAVITAR 5φ PHASE CONTROLLERS (1-40167, 1-40168, 1-40169)

FF MOTOR
5 POSITION FEMALE
CONNECTOR
(MOLEX #50-57-9405)

HE SENSOR
4 POSITION FEMALE
CONNECTOR
(MOLEX #50-57-9404)

5φ FF MOTOR PINOUT
PIN 1 = MOTOR 1 (BLUE)
PIN 2 = MOTOR 2 (RED)
PIN 3 = MOTOR 3 (ORANGE)
PIN 4 = MOTOR 4 (GREEN)
PIN 5 = MOTOR 5 (BLACK)

4 PIN HE SENSOR PINOUT
PIN 1 = COMMON
PIN 2 = FAR LIMIT
PIN 3 = +5VDC
PIN 4 = NEAR LIMIT

OUTLINE

UNLESS OTHERWISE SPECIFIED DIMENSIONS ARE IN INCHES [MM] AND INCLUDE CHEMICALLY APPLIED OR PLATED FINISHES	PROPRIETARY AND CONFIDENTIAL THE INFORMATION CONTAINED IN THIS DRAWING IS THE SOLE PROPERTY OF NAVITAR. ANY REPRODUCTION IN PART OR AS A WHOLE WITHOUT THE WRITTEN PERMISSION OF NAVITAR IS PROHIBITED.			
SCALE: 2:1				
WEIGHT: 0.82 lbmass	DR BY: J. WILLIAMSON	MTR FF, 5φ, 0.25X LENS ATTACHMENT		
CH BY: PB	PROJECT #: E3576			
DATE DR: 11/29/2017	DO NOT SCALE DRAWING	SIZE: C	PART NUMBER: 1-81201M5	REV: A