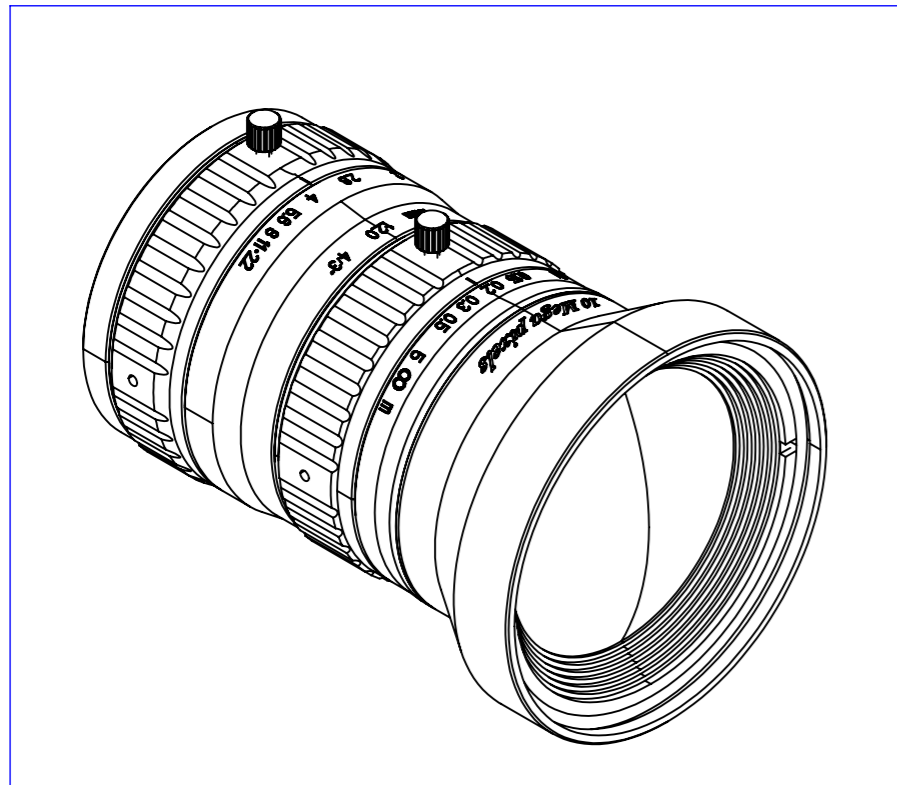
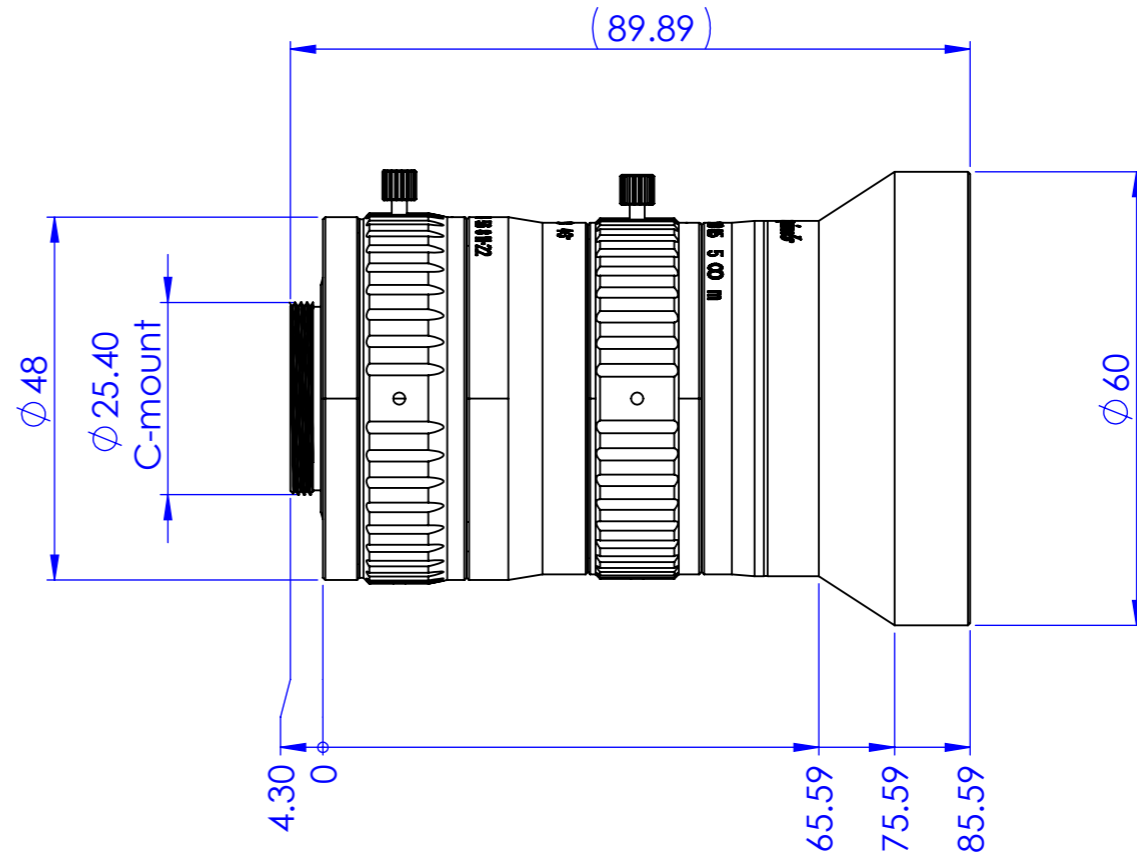
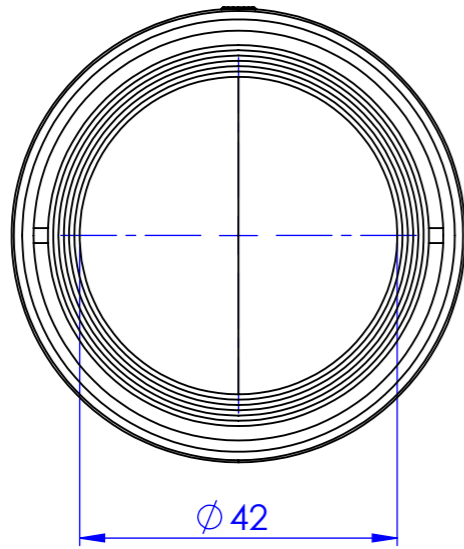


FOR MISSING DIMENSIONS SEE DWEN10MPL1620-A.STEP

Rev No.	Description	Date	Name



Material		N.A.		Mass		338 g		Scale		1:1							
Surface treatment		N.A.		Part No.		COEN10MPL1620											
Geometrical tolerance (ISO 2768-2)								Class		K		Description					
Linear tolerance (ISO 2768-2)								Class		m		Undimensioned bevels		0.5x45°			
0.5 ±3		>3± 6		>6± 30		>30± 120		>120 ±400		>400± 1000		>1000 ±2000		>2000 ±4000			
±0.1		±0.1		±0.2		±0.3		±0.5		±0.8		±1.2		±2			
<p>OPTO ENGINEERING S.r.l. - Mantova Italy - Tel. +39 0376 699111 - www.opto-engineering.com</p>								Date		Name		Drawing No.		Sheet			
								Designed		26/07/2019		Rodella		EN10MPL1620		1/1	
								Drawn		29/07/2019		Rodella		EN10MPL1620		1/1	
Checked		31/07/2019		Ccharly		EN10MPL1620		1/1		Secret and confidential - All rights reserved - No copy, dissemination or circulation is allowed unless specifically authorized in writing by OPTO ENGINEERING S.r.l. - Any violation shall be legally prosecuted.							

all dimensions are in mm