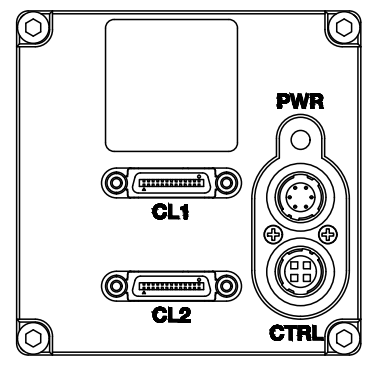
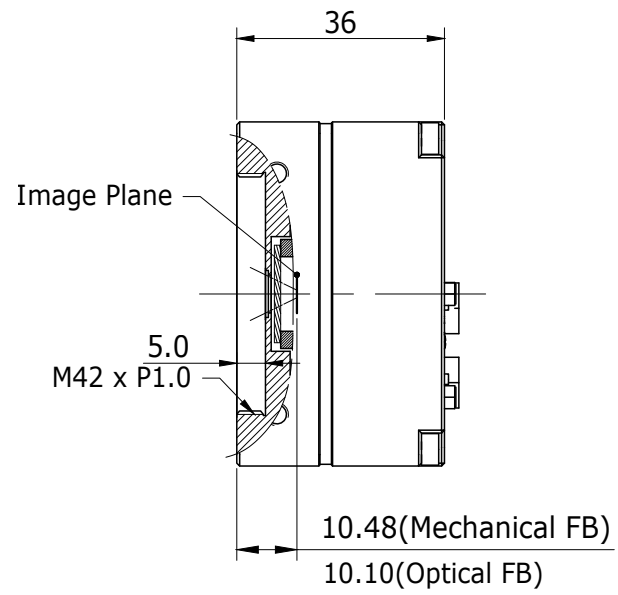
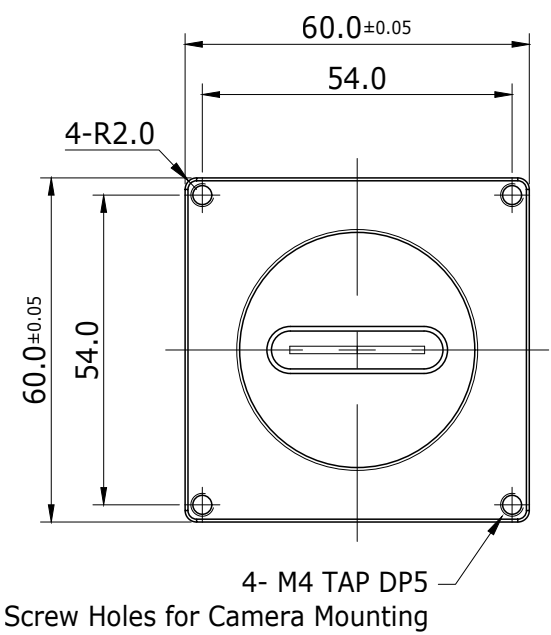
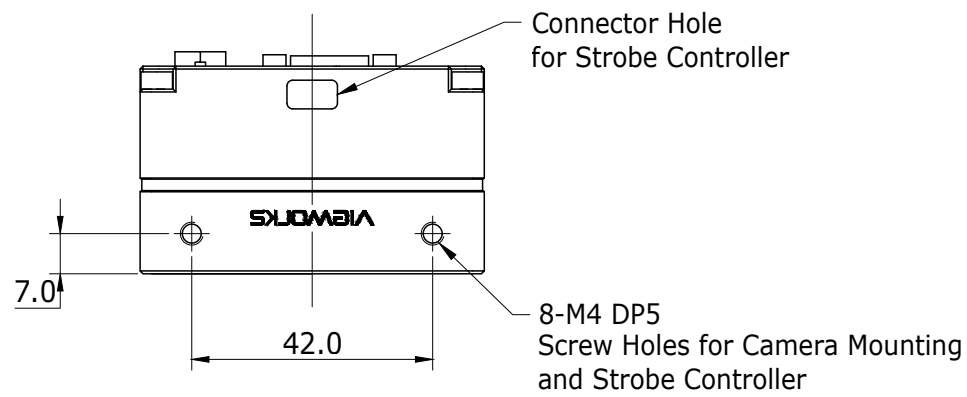
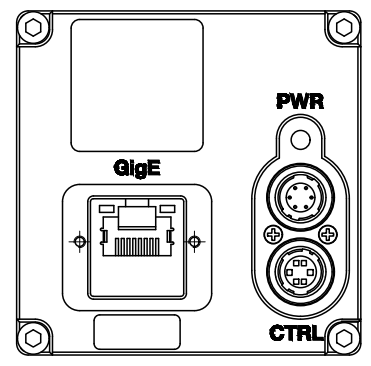
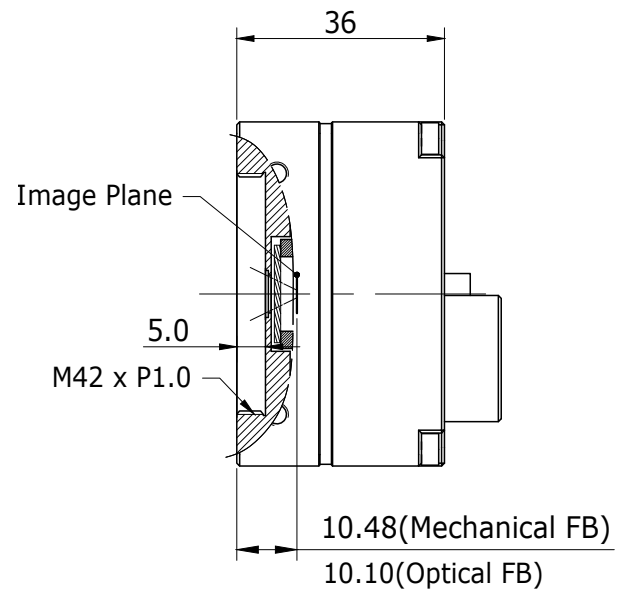
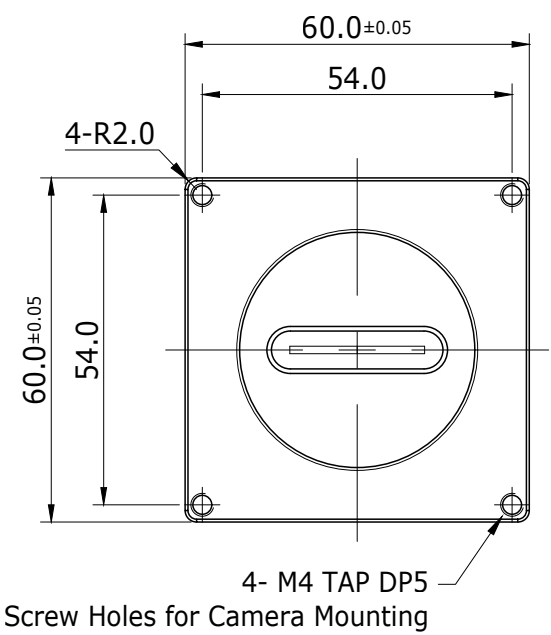
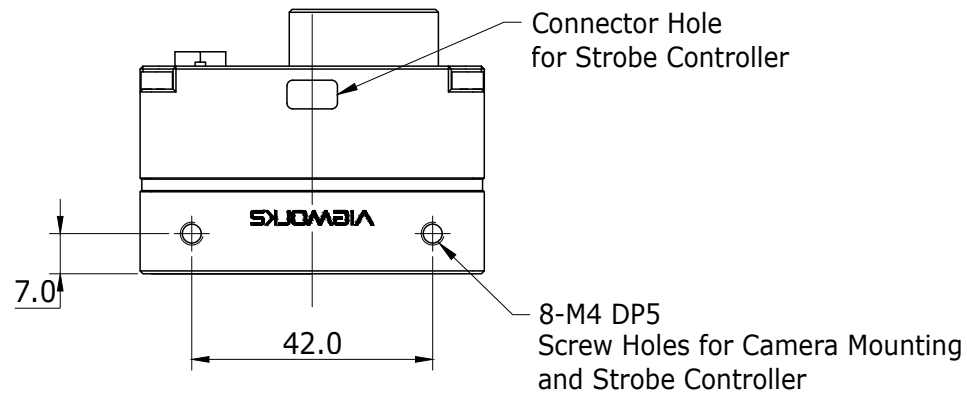


UNIT	ITEM	REVISION	V1.6
mm	VT-3-4-6K-CL-M42 VTC-2K-CL-M42		'21.01.08



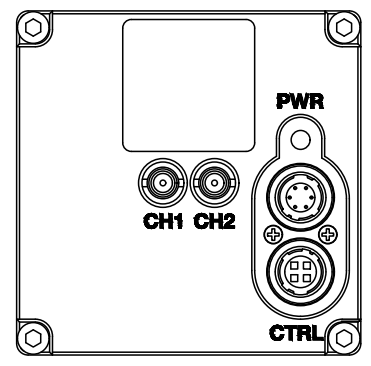
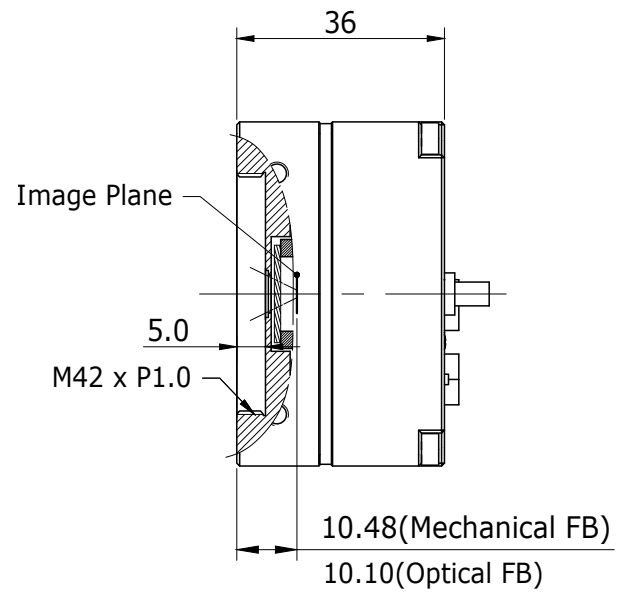
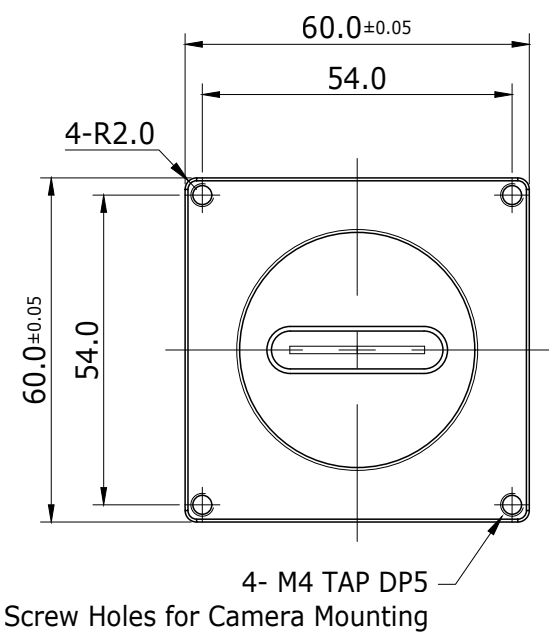
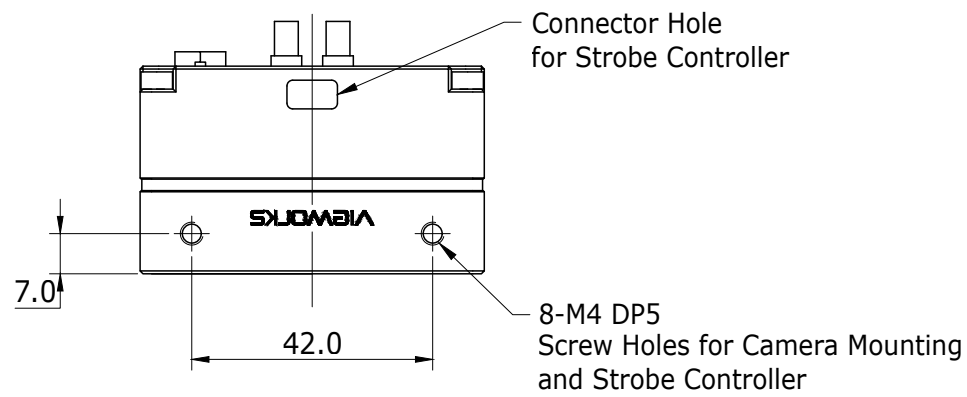
MODEL NAME	
Lens Mount: M42-mount	
1	VT-3K7C-E/H100
2	VT-4K5C-E/H100
3	VT-6K3.5C-E/H100
4	VTC-2K10.5C-C100

UNIT	ITEM	REVISION	V1.7
mm	VT-3-4-6K-GigE-M42 VTC-2K-GigE-M42		'21.01.08



MODEL NAME	
Lens Mount: M42-mount	
1	VT-3K7G-E/H38
2	VT-4K5G-E/H26
3	VT-6K3.5G-E/H19
4	VTC-2K10.5G-C19

UNIT	ITEM	REVISION	V1.6
mm	VT-3-4-6K-CXP-M42 VTC-2K-CXP-M42		'21.01.08



MODEL NAME	
Lens Mount: M42-mount	
1	VT-3K7X-E/H250
2	VT-4K5X-E/H200
3	VT-6K3.5X-E/H160
4	VTC-2K10.5X-C140