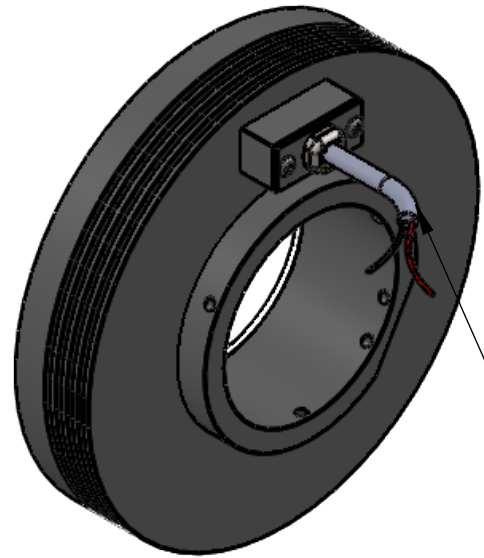
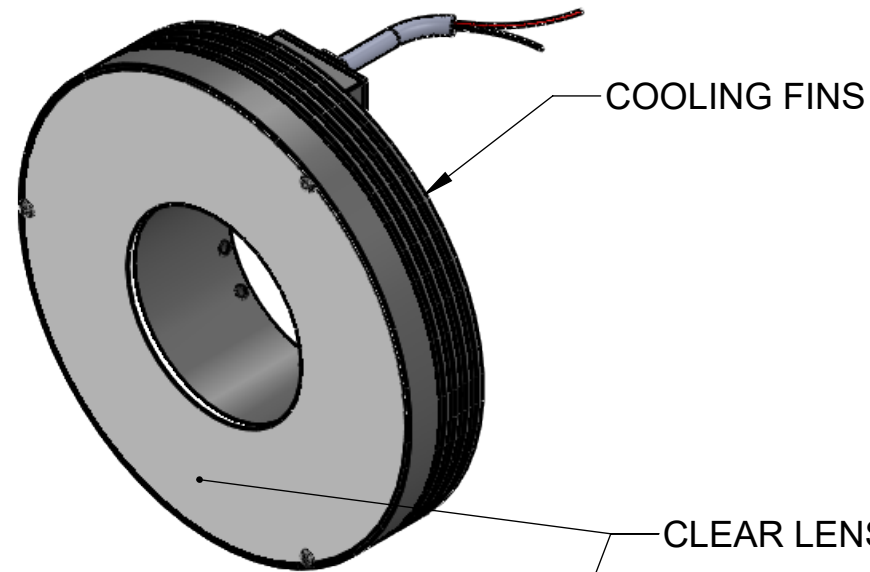
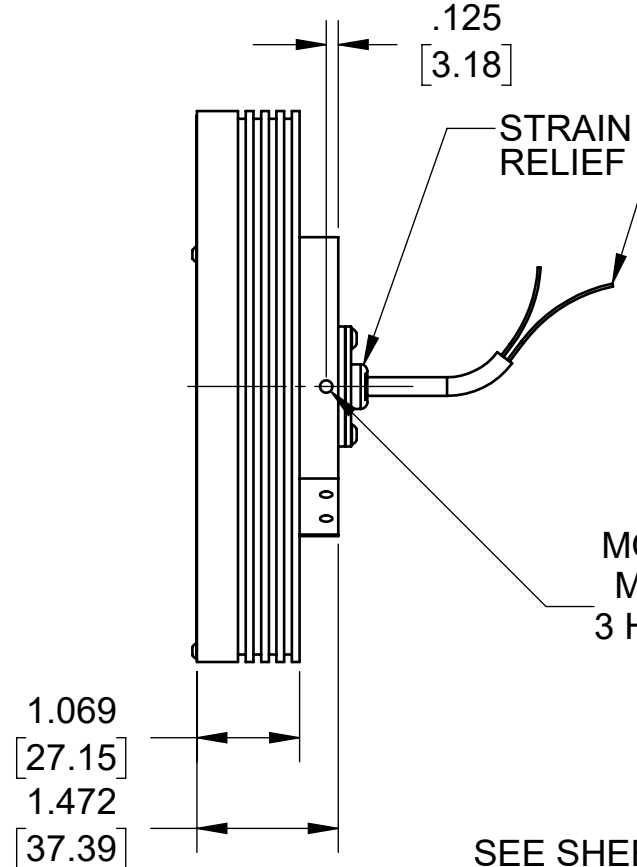
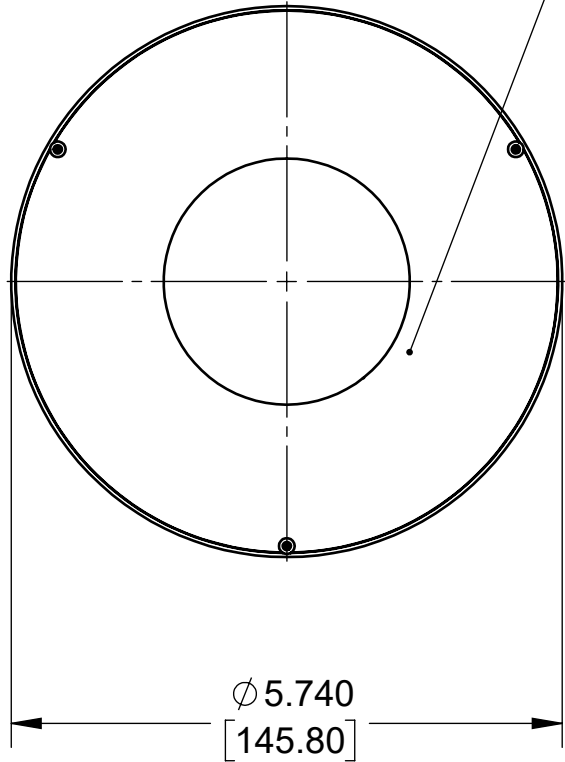
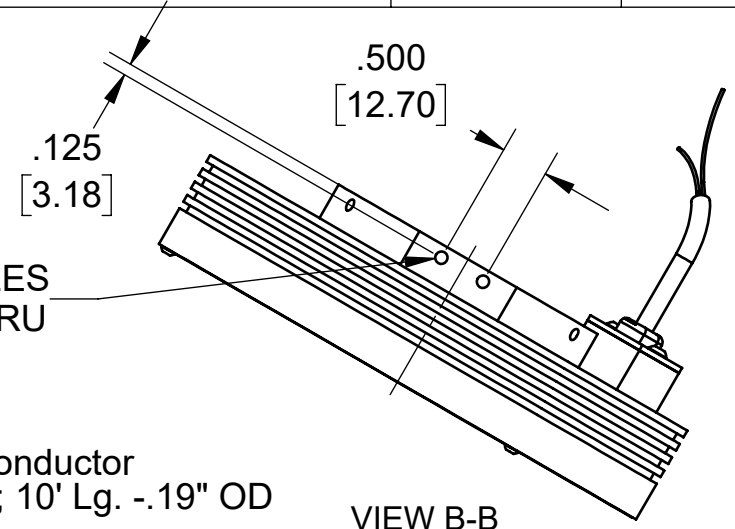


REVISIONS			
REV.	DESCRIPTION	DATE	APPROVED
D	REDRAWN	7/29/2013	

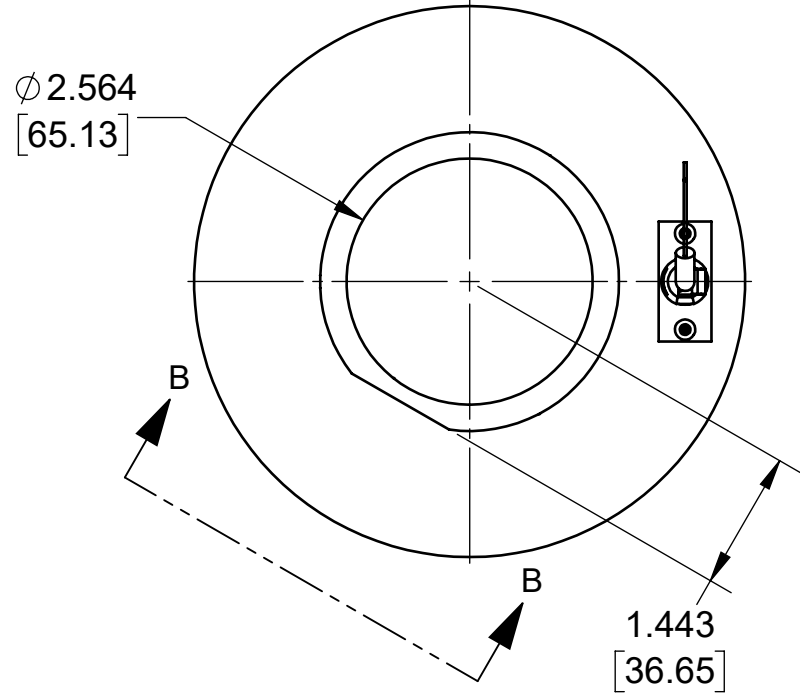


POWER CABLE:
24 AWG Stranded; 2 conductor
w/ flying leadwire ends; 10' Lg. - .19" OD



STRAIN RELIEF

MOUNTING HOLES
M4X0.7 - 6H THRU
3 HOLES LOCATED
120° APART



SEE SHEET 2 FOR EXPLODED VIEW AND BOM.

Metaphase Technologies, Inc. 211 Sinclair Road, Suite 100, Bristol, PA. 19007 215-639-8699 Fax 215-639-0977



QUANTITY:	Per order
MATERIAL:	Per BOM
FINISH:	See note
TREATMENT:	N/A

TOLERANCE/FINISH UNLESS OTHERWISE SPECIFIED				
INCHES [MM]				
X	.X	.XX	.XXX	125√RMS [RA3.2um]
[±.76]	±.030 [±.25]	±.010 [±.13]	±.005	ANGLES ±1°

THIS DOCUMENT IS THE PROPERTY OF METAPHASE TECHNOLOGIES, INC. WHOM MAY LOAN IT, SUBJECT TO RETURN UPON DEMAND. IT INCLUDES CONFIDENTIAL & PROPRIETARY INFORMATION WHICH MAY NOT BE DISCLOSED TO ANY THIRD PARTY, AND/ OR USED FOR ANY PURPOSE CONTRARY TO IT'S INTENDED USE, WITHOUT THE EXPRESSED PRIOR WRITTEN CONSENT OF METAPHASE TECHNOLOGIES, INC.

TITLE Top Assy.; 5" Ring Light		
USED ON Per customer		
SIZE B	DRAWING NUMBER RL301-1	REV D
SCALE 1:2		SHEET 1 OF 1

Approval Signature _____ Date ____/____/____