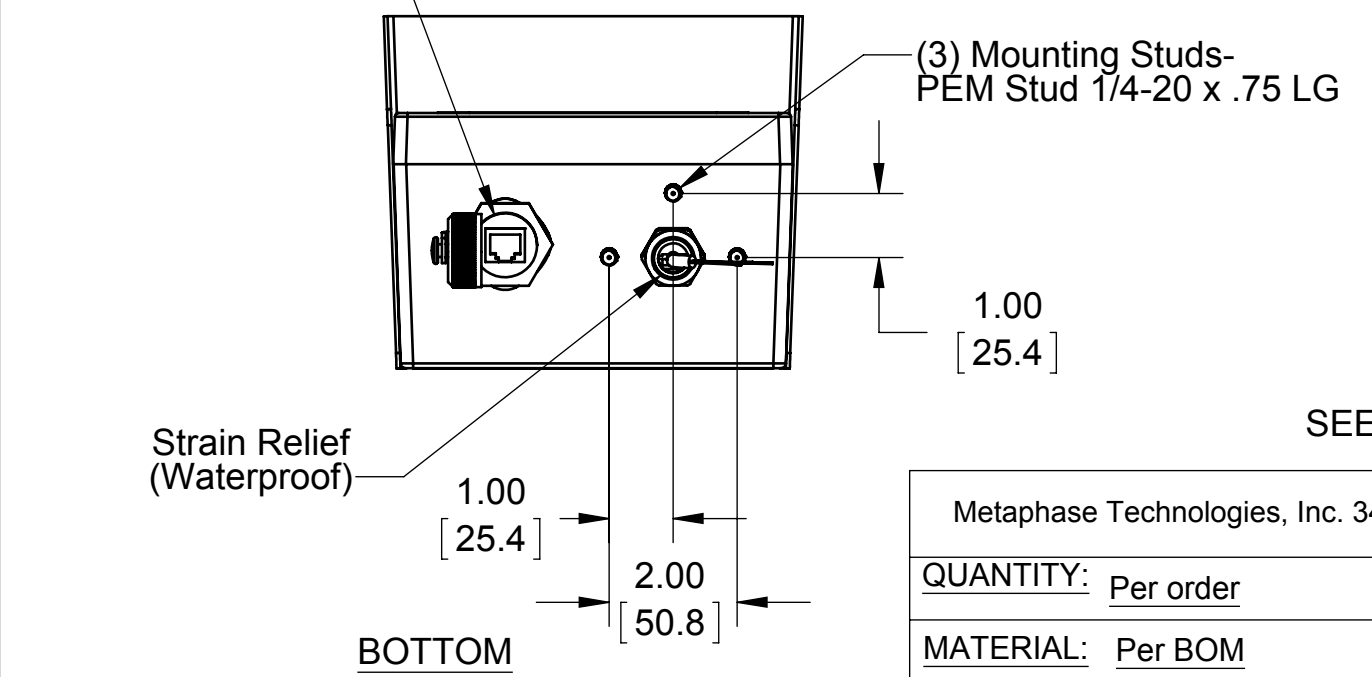
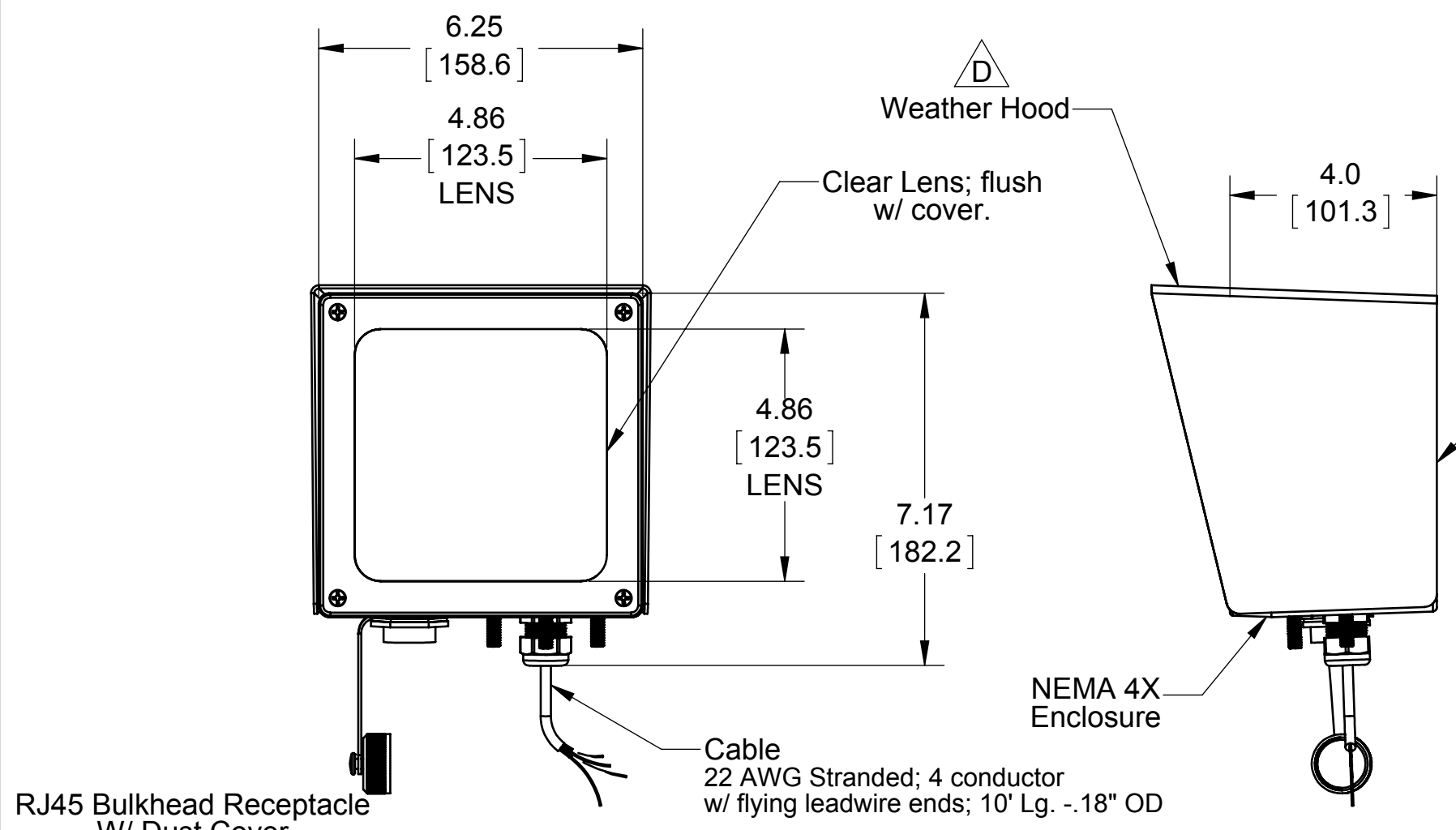



| REVISIONS | | | | |
|-----------|--|-----------|----------|--|
| REV. | DESCRIPTION | DATE | APPROVED | |
| A | INITIAL RELEASE | 9/27/2012 | | |
| B | REDESIGNED USING NEW ENCLOSURE AND REARRANGED INTERNAL COMPONENTS. | 6/7/2013 | | |
| C | CHANGED LENS DESIGN | 6/13/2013 | | |
| D | ADDED HOOD AND SCREWS | 6/23/2013 | | |
| E | CHANGED ITEM 4- SEE SHEET 2 (UPDATED STANDOFFS AND PCB DESIGN) | 9/24/2013 | | |



SEE SHEET 2 FOR EXPLODED VIEW AND BOM

| | | | |
|---|--|---|--|
| Metaphase Technologies, Inc. 3412 Progress Drive, Unit C, Bensalem, PA. 19020 215-639-8699 Fax 215-639-0977 | |  | |
| QUANTITY: <u>Per order</u> | TOLERANCE/FINISH UNLESS OTHERWISE SPECIFIED INCHES[MM] 125√RMS [RA3.2um] | | THIS DOCUMENT IS THE PROPERTY OF METAPHASE TECHNOLOGIES, INC. WHOM MAY LOAN IT, SUBJECT TO RETURN UPON DEMAND. IT INCLUDES CONFIDENTIAL & PROPRIETARY INFORMATION WHICH MAY NOT BE DISCLOSED TO ANY THIRD PARTY, AND/ OR USED FOR ANY PURPOSE CONTRARY TO IT'S INTENDED USE, WITHOUT THE EXPRESSED PRIOR WRITTEN CONSENT OF METAPHASE TECHNOLOGIES, INC. |
| MATERIAL: <u>Per BOM</u> | X .X .XX .XXX [±.76] [±.030] [±.010] [±.005] ANGLES±1° [±.25] [±.13] | | |
| FINISH: <u>White Powder Coat</u> | | | |
| TREATMENT: <u>N/A</u> | | | |
| TITLE | | Law Enforcement Light | |
| USED ON | | Per customer | |
| SIZE | DRAWING NUMBER | REV | |
| B | MB-NLRS605-IR-AT2-1 | E | |
| SCALE 1:8 | | SHEET 1 OF 2 | |