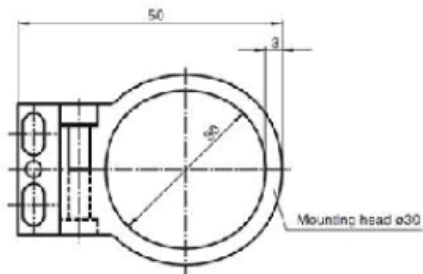
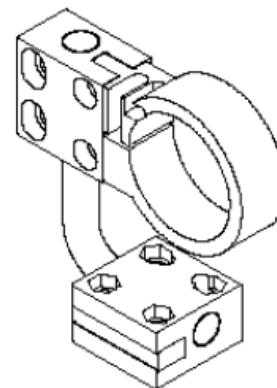
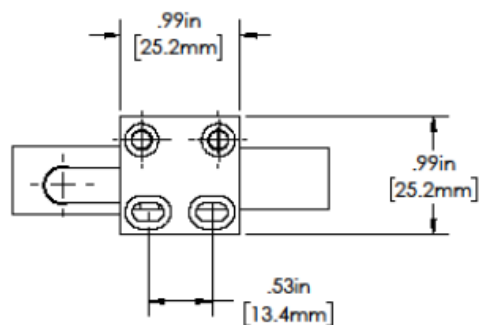
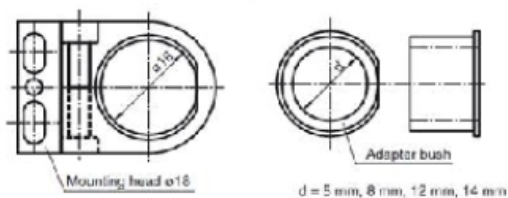
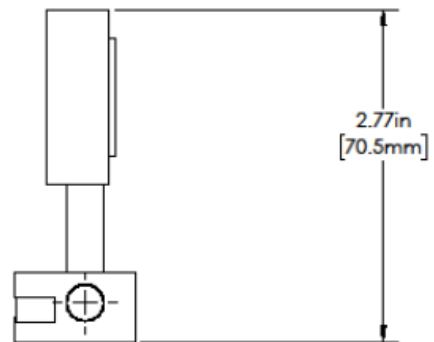
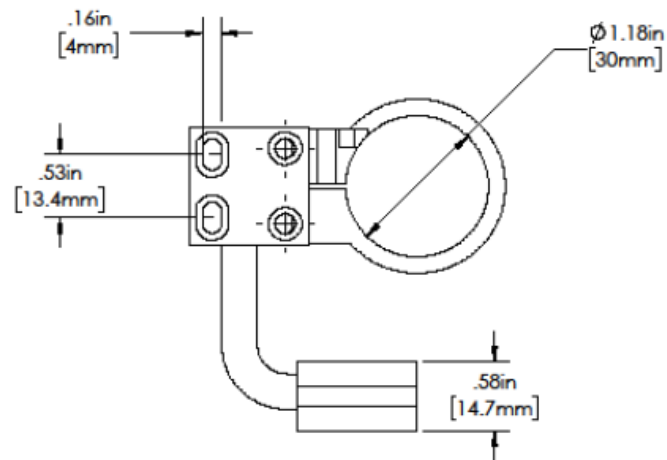


OPTIONAL BRACKET



Metaphase Technologies, Inc. 211 Sinclair Road, Suite 100,
Bristol, PA. 19007 215-639-8699 Fax 215-639-0977

TOLERANCE/FINISH
UNLESS OTHERWISE SPECIFIED

INCHES(MM)		125V RMS (RA3.2um)
X	.XX	.XXX
[±.76]	$\pm .030$ [±.25]	$\pm .010$ [±.13]

FLAT PATTERNS USE 0.5 K FACTOR FOR DESIGN
REFERENCE ONLY. ACTUAL VALUE MAY VARY.
USE TEST PART AS REQ'D TO VERIFY ACCURACY

THIS DOCUMENT IS THE PROPERTY OF
METAPHASE TECHNOLOGIES, INC. WHOM MAY
LOAN IT, SUBJECT TO RETURN UPON DEMAND.
IT INCLUDES CONFIDENTIAL & PROPRIETARY
INFORMATION WHICH MAY NOT BE DISCLOSED
TO ANY THIRD PARTY, AND/OR USED FOR
ANY PURPOSE CONTRARY TO ITS INTENDED
USE, WITHOUT THE EXPRESSED PRIOR WRITTEN
CONSENT OF METAPHASE TECHNOLOGIES, INC.

METAPHASE
LIGHTING TEC-NOLOGIES

TITLE
SPOTLIGHT 0.6" ADJ FOCUS

USED ON
Per customer

SIZE B	DRAWING NUMBER MB-AFSL-105-01	REV E
SCALE 1:4	SHEET 2 OF 2	