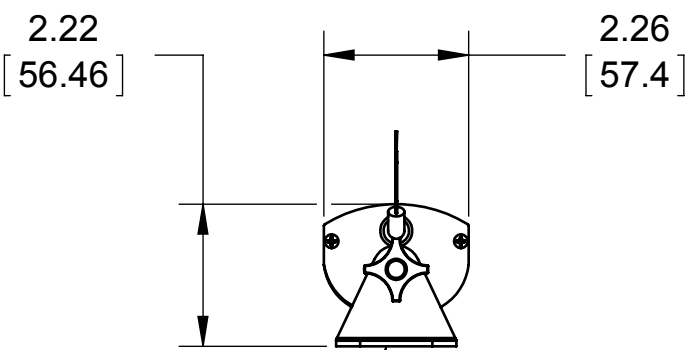
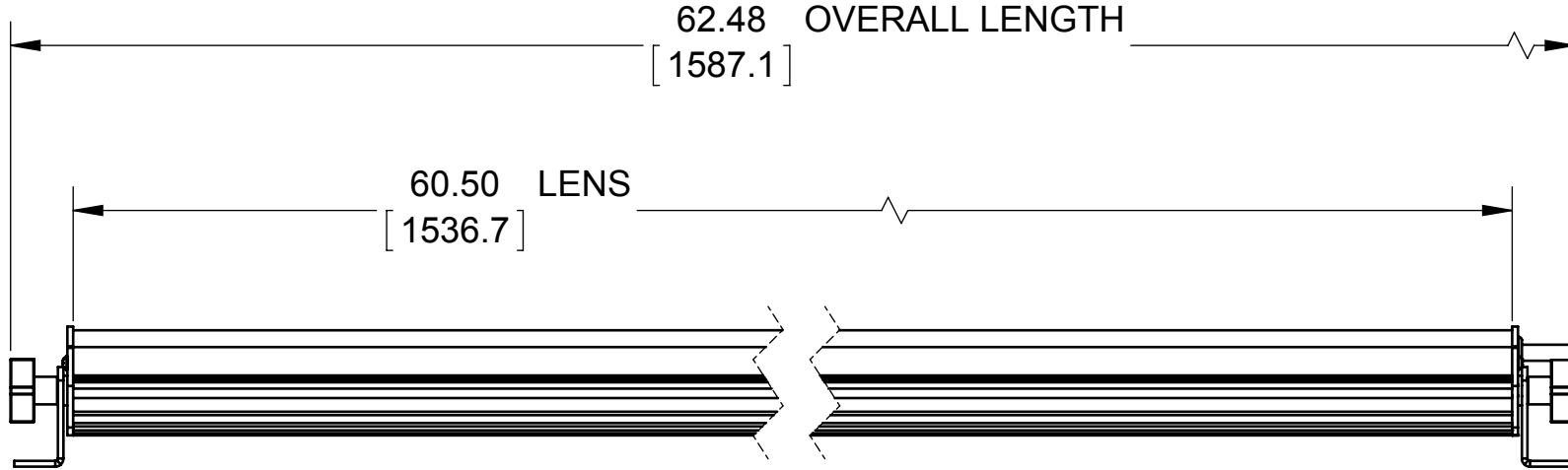


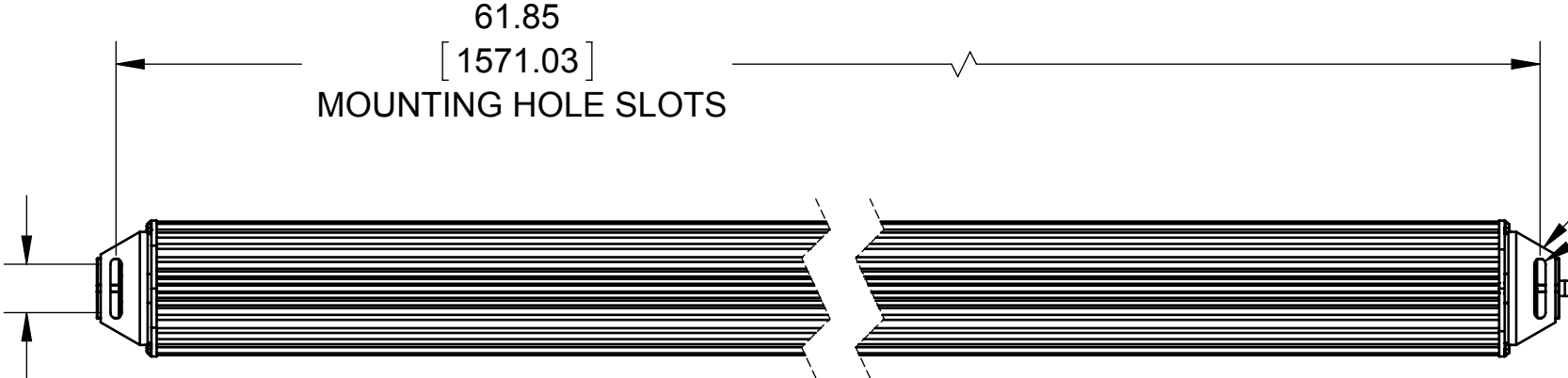
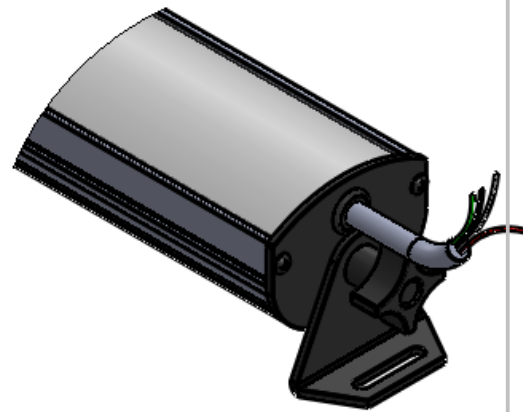
REVISIONS			
REV.	DESCRIPTION	DATE	APPROVED

POWER CABLE  
18 AWG, (4) CONDUCTOR  
WITH FLYING LEADWIRE ENDS.  
10 FT LG.



KNOBS FOR  
ADJUSTING  
LIGHT ANGLE

MOUNTING BRACKETS  
USE #10 OR M6 HARDWARE  
TO MOUNT LIGHT



Metaphase Technologies, Inc. 211 Sinclair Road, Suite 100, Bristol, PA. 19007 215-639-8699 Fax 215-639-0977

QUANTITY: Per order  
MATERIAL: Per BOM  
FINISH: Black Anodize  
TREATMENT: N/A

TOLERANCE/FINISH UNLESS OTHERWISE SPECIFIED				
INCHES[MM]				125V RMS
X	.X	.XX	.XXX	[RA3.2um]
[±.76]	±.030 [+.25]	±.010 [+.13]	±.005	ANGLES±1°

THIS DOCUMENT IS THE PROPERTY OF METAPHASE TECHNOLOGIES, INC. WHOM MAY LOAN IT, SUBJECT TO RETURN UPON DEMAND. IT INCLUDES CONFIDENTIAL & PROPRIETARY INFORMATION WHICH MAY NOT BE DISCLOSED TO ANY THIRD PARTY, AND/ OR USED FOR ANY PURPOSE CONTRARY TO IT'S INTENDED USE, WITHOUT THE EXPRESSED PRIOR WRITTEN CONSENT OF METAPHASE TECHNOLOGIES, INC.

TITLE	ISO Light- 60" Long		
USED ON	Per Customer		
SIZE	DRAWING NUMBER	REV	
B	ISO-60-1	A	
SCALE 1:3		SHEET 1 OF 2	

Approval Signature \_\_\_\_\_

/ /  
Date