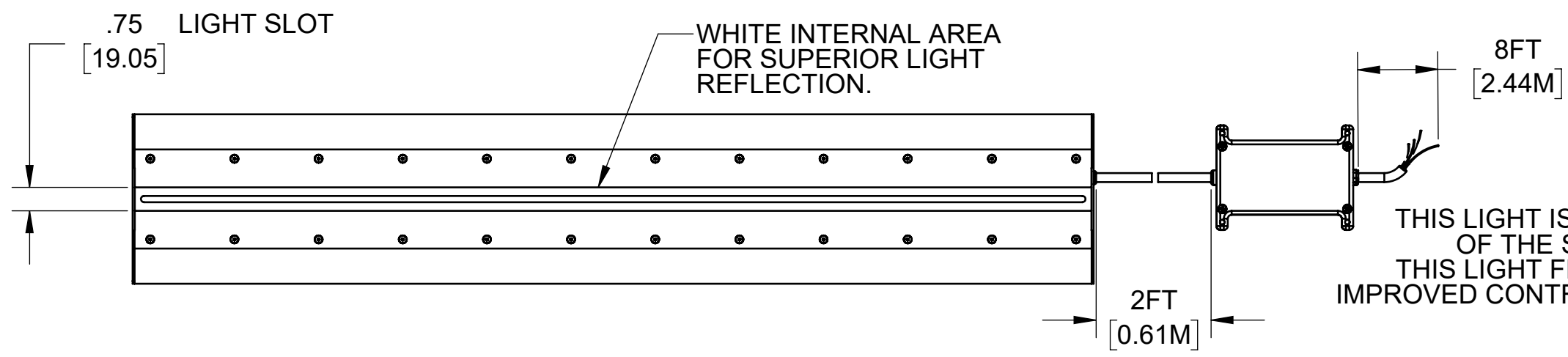
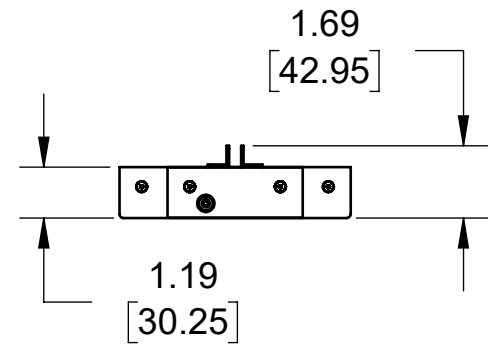
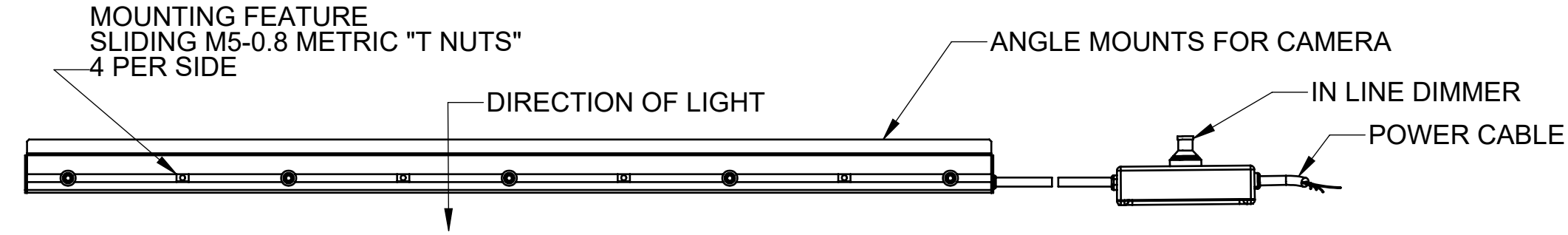
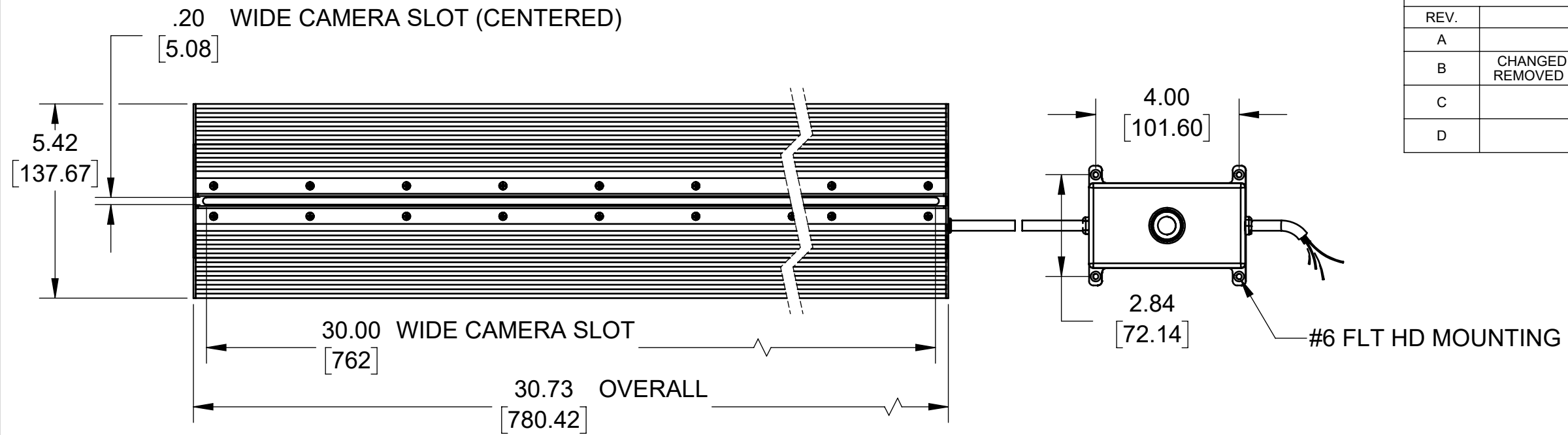


REVISIONS		
REV.	DESCRIPTION	DATE
A	INITIAL RELEASE	11/25/2013
B	CHANGED SCREW HOLES FROM THRU TO BLIND - REMOVED PREVIOUS SET SCREWS AND SILICONE.	5/24/2016
C	CABLE SPEC UPDATE	11/10/2017
D	ADDED ILD BOX	4/26/2018



THIS LIGHT IS A HIGH PERFORMANCE VERSION OF THE STANDARD CDT706 30" LIGHT. THIS LIGHT FEATURES ADDED HEATSINKS FOR IMPROVED CONTROL OF THE EXTRA HEAT AND POWER.

Metaphase Technologies, Inc. 211 Sinclair Road, Suite 100, Bristol, PA. 19007 215-639-8699 Fax 215-639-0977



SEE SHEET 2 FOR EXPLODED VIEW AND BOM.

QUANTITY:	Per order	TOLERANCE/FINISH UNLESS OTHERWISE SPECIFIED				
MATERIAL:	Per BOM	INCHES [MM]				
FINISH:	Black Anodized	X	.X	.XX	.XXX	125V _{RMS} [RA3.2um]
TREATMENT:	N/A	[±.76]	[±.030 [±.25]]	[±.010 [±.13]]	±.005	ANGLES ±1°

THIS DOCUMENT IS THE PROPERTY OF METAPHASE TECHNOLOGIES, INC. WHOM MAY LOAN IT, SUBJECT TO RETURN UPON DEMAND. IT INCLUDES CONFIDENTIAL & PROPRIETARY INFORMATION WHICH MAY NOT BE DISCLOSED TO ANY THIRD PARTY, AND/ OR USED FOR ANY PURPOSE CONTRARY TO IT'S INTENDED USE, WITHOUT THE EXPRESSED PRIOR WRITTEN CONSENT OF METAPHASE TECHNOLOGIES, INC.

TITLE Top Assy.; HP-CDT706 -30" Light		
USED ON Per customer		
SIZE B	DRAWING NUMBER HP-CDT706-1	REV D
SCALE 1:5		SHEET 1 OF 1

Approval Signature _____

/ /
Date