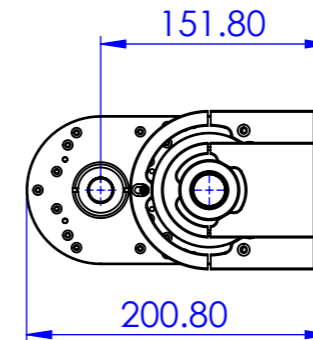
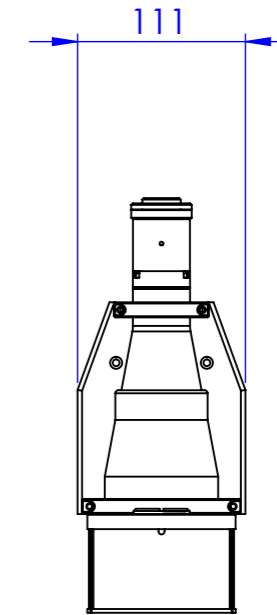
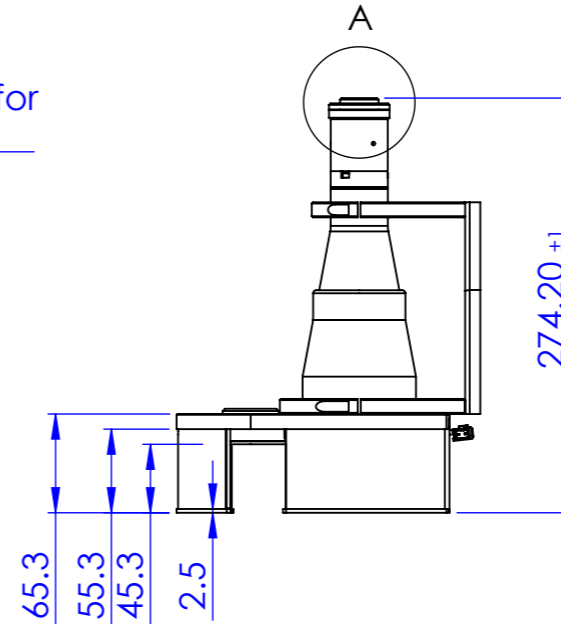
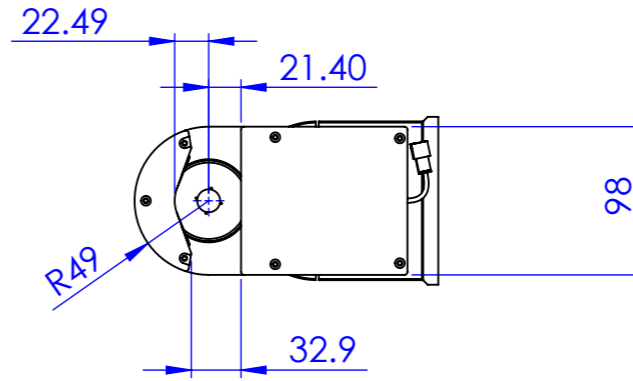
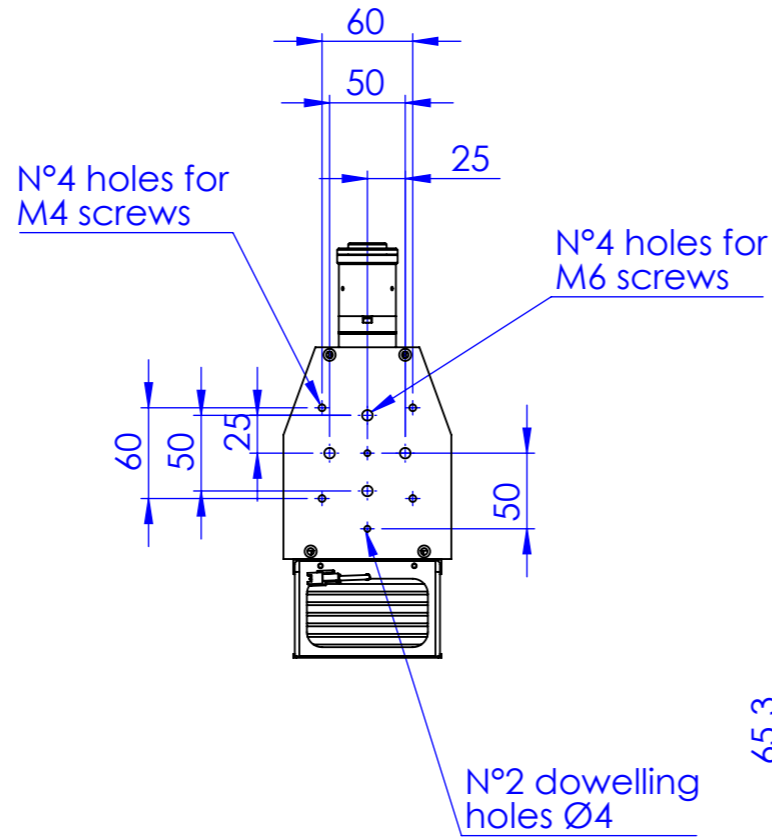
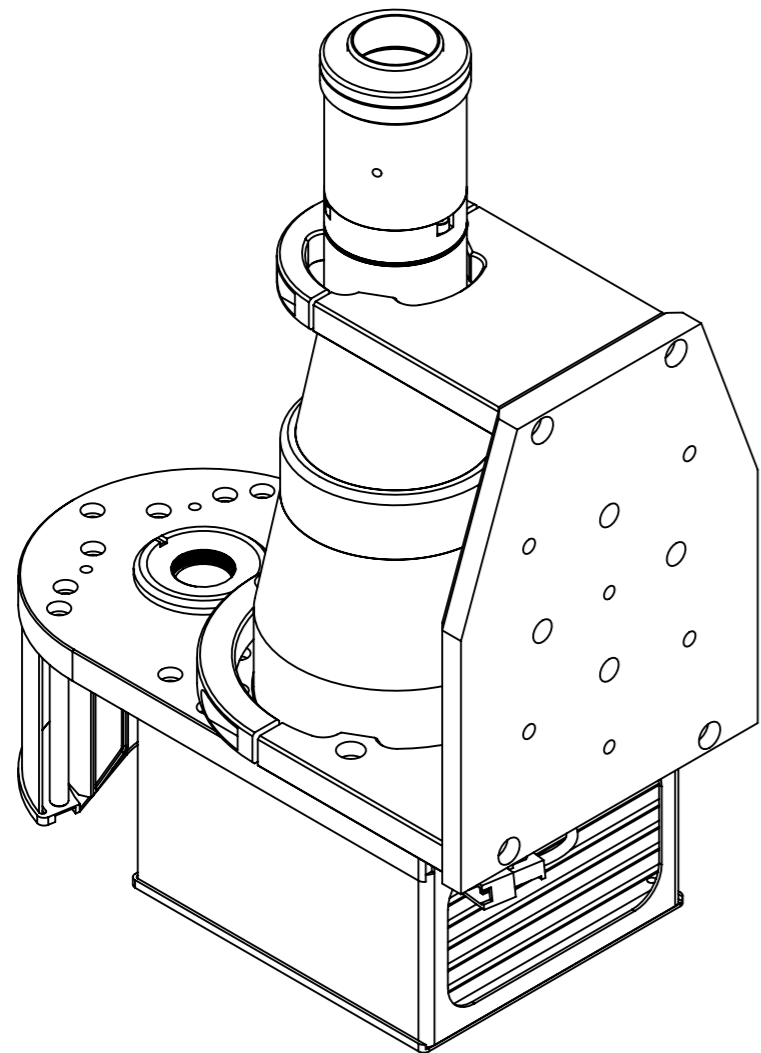
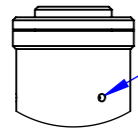


Phase adjustment

DETTAGLIO A
SCALA 2:5



Material		N.A.		Mass		3530.316 g		Scale		1:5			
Surface treatment		N.A.		Part No.		CO29844							
Geometrical tolerance (ISO 2768-2)				Class		K		Undimensioned bevels		0.5x45°			
Linear tolerance (ISO 2768-2)				Class		m		Undimensioned radii		R 0.5			
0.5 ±3	>3± 6	>6± 30	>30± 120	>120 ±400	>400± 1000	>1000 ±2000	>2000 ±4000						
±0.1	±0.1	±0.2	±0.3	±0.5	±0.8	±1.2	±2						
<p>OPTO ENGINEERING S.r.l. - Mantova Italy - Tel. +39 0376 699111 - www.opto-engineering.com</p>				Date		Name		Drawing No.		Sheet			
				Designed		25/03/2014		Santini		DP 29844-A		1/1	
				Drawn		21/02/2020		Vasconetto					
Checked		30/03/2020		Bertolucci		<i>Secret and confidential - All rights reserved - No copy, dissemination or circulation is allowed unless specifically authorized in writing by OPTO ENGINEERING S.r.l. - Any violation shall be legally prosecuted.</i>							

all dimensions are in mm