



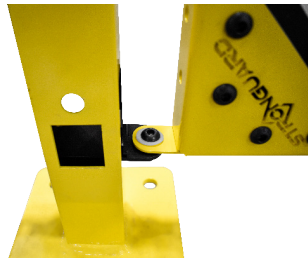
THESE STEPS REQUIRE AT LEAST 2 PEOPLE

Swinging Door Installation

1. Insert brackets into posts where door is to be installed and secure with bolts.



2. Attach door to upper and lower brackets with bolts.



3. Install handle assembly.



Congratulations on your purchase of Stronguard® Modular Guarding. Be confident in knowing this guarding has been engineered to provide you with an easy to assemble, long-lasting and safe product that will exceed your expectations. Please use the easy-to-follow steps below to assemble your guarding that will provide you with years of satisfied protection.

General Assembly Instructions

This quick start guide will assist in the setup of the Stronguard® Modular Guarding, no experience required. Safety is the most important detail in manufacturing and Swivellink® strives to provide the best safety equipment available.

Recommended Tools

- (1) tape measure
- (1) level
- (2) step ladders
- (1) chalk line
- (2) Allen wrenches
- (2) 7/16" open-end wrenches or 7/16" deep socket ratchets

Installation Tips

- Review all instructions before starting the assembly process.
- Installation must have a minimum of two people.
- Make sure all posts are leveled. Shims not provided.
- The side of the panel with the bolt head is considered the outside of the panel.
- The tabs on the panel corner brackets will rest on top of the post tabs when installing the panel to post.
- It is recommended to start in a corner, then work your way out in both directions, extending several feet. Use temporary bracing during setup until hardware is tightened and the product is properly anchored.
- Installer should cut off any hardware that extends into an aisle or door opening.
- Hard hat recommended.

Safety Requirements

It is the responsibility of the end-user to perform risk assessment and ensure your guarding system meets all applicable local, state, national, and international safety requirements for its intended use, including robot safety requirements. Reference ISO 14120, Safety of Machinery, and 10218-2:2011, Robots and Robotic Devices. This specifies that guarding devices are to be intended solely as distance guards (guard that does not completely enclose a danger zone, but which prevents or reduces access by virtue of its dimensions and its distance from the danger zone). While in cases where the perimeter guard is required to act as a limiting device, the results of the risk assessment shall be used to determine the requirements for its specific design, strength, and deflection for that guard.

Limited Warranty

Swivellink® products are warranted to the original purchaser against all faults in material and craftsmanship for 1 year from purchase date. Swivellink® will repair or replace, at its discretion, any materials that were not subject to misuse, neglect, accident, or stored improperly during the 1-year warranty period. Any modifications or improper installation will invalidate this warranty. Swivellink® will not be held responsible due to incidental or consequential damages.

Contact Information

Thank you for choosing Swivellink®, we appreciate your business. If you have any questions at all, please do not hesitate to contact your local distributor. Or if you prefer, contact us directly at swivellink.com under the 'How Do I Buy' tab.

swivellink.com



THESE STEPS REQUIRE AT LEAST 2 PEOPLE

Panel Installation

1. Clear the area

- Be sure the area you are going to assemble the guarding is free from any obstacles that may hinder your ability to move and easily assemble your new guarding.

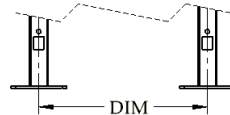
2. Uncrate your new guarding

- Carefully remove the guarding and hardware from the shipping container. It is recommended to place all parts into separate groups for ease of identification during the assembly of your new guarding.

3. Mark your posts on the floor

- It is recommended to mark all posts on the floor before permanently anchoring your posts.

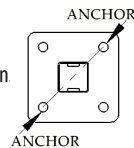
All post-to-post dimensions will be dimensioned **center-of-post to center-of-post**.



! Only finger tighten until prompted to fully tighten.

4. Attach corner posts

- After your layout is confirmed, permanently secure one corner anchor post to the floor to start assembling your wall. A minimum of two anchors (not included) per post are required for installation. Anchors must be installed **diagonally opposing each other**.



5. Mount remaining posts

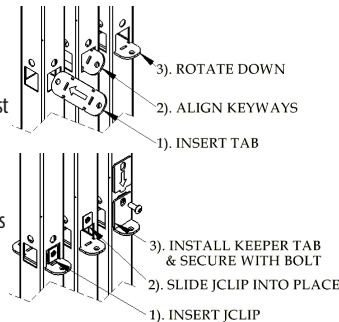
- Mount the remaining posts of your guarding using your pre-marked locations on the floor.

All post-to-post dimensions will be dimensioned **center-of-post to center-of-post**.

6. Install panel section mounting points

- Install the guarding tabs in their correct locations based on your layout.

- Center tabs
 - Used to attach two panel sections on opposing sides of an anchor post
- End tabs
 - Used to attach a panel section on only one side of an anchor post
- Keeper tabs
 - Used to keep center and end tabs in place during the assembly process
 - Must install 5/16-18 JCLIPS on posts before installing keeper tabs.
 - 6 keeper tabs per post are needed for proper installation.

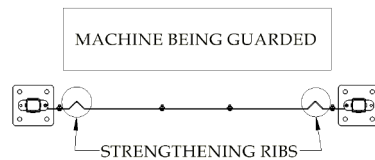


7. Install panel sections

- Install all panel sections in their respective areas with the v-ribs pointing away from what is being guarded.

****PLEASE NOTE**** When attaching an upper and lower panel section, only one bolt and nut is needed per attachment point.

Only hand tighten hardware until all sections are installed.



Stronguard® accessories

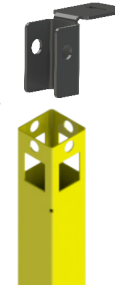
1. All remaining accessory options (i.e., door gap safety guard, light curtain bracket, etc.) are engineered to easily attach to existing post holes and cutouts using the hardware supplied with each kit.



THESE STEPS REQUIRE AT LEAST 2 PEOPLE

Sliding Door Installation

1. Insert brackets into posts where door is to be installed and secure with bolts.



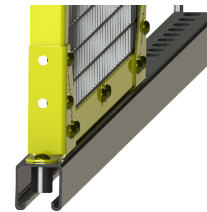
2. Attach upper guide rail to top brackets.



3. Attach rollers to top of door panel.



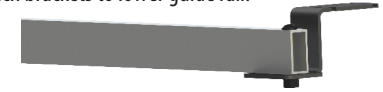
4. Attach lower rail guide and stopper to bottom of door. Stopper will be located under handle.



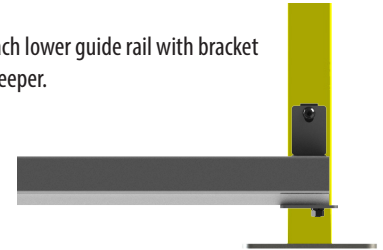
5. Install tabs and keepers to post.



6. Attach brackets to lower guide rail.



7. Attach lower guide rail with bracket to keeper.



8. Slide door into top and bottom rail guides.



9. Install handle assembly.

