

1

2

3

4

D

D

C

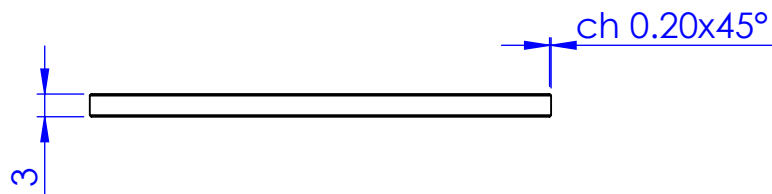
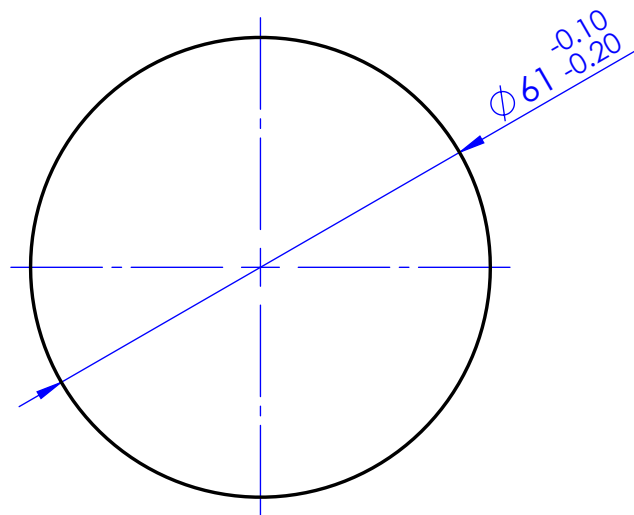
C

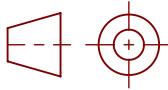

B

B

A

A



Material		Borofloat				Mass	22 g	Scale	1:1
Surface treatment						Part No.	CO22408		
Geometrical tolerance (ISO 2768-2)		Class		K		Undimensioned bevels	0.5x45°		
Linear tolerance (ISO 2768-2)		Class		m					
0.5	>3÷	>6÷	>30÷	>120	>400÷	>1000	>2000	Description	
±3	6	30	120	÷400	1000	±2000	±4000		
±0.1	±0.1	±0.2	±0.3	±0.5	±0.8	±1.2	±2	WI036	
		Date		Name		Drawing No.		Sheet	
OPTO ENGINEERING OPTO ENGINEERING S.r.l. - Mantova, Italy - Tel. +39 0376699111 - www.opto-e.com		Designed		Santini		DP 22408-C		1/1	
		Drawn		LSantini					
		Checked		Vasconetto					
<i>Secret and confidential - All rights reserved - No copy, dissemination or circulation is allowed unless specifically authorized in writing by OPTO ENGINEERING S.r.l. - Any violation shall be legally prosecuted.</i>									

1

2

3

4