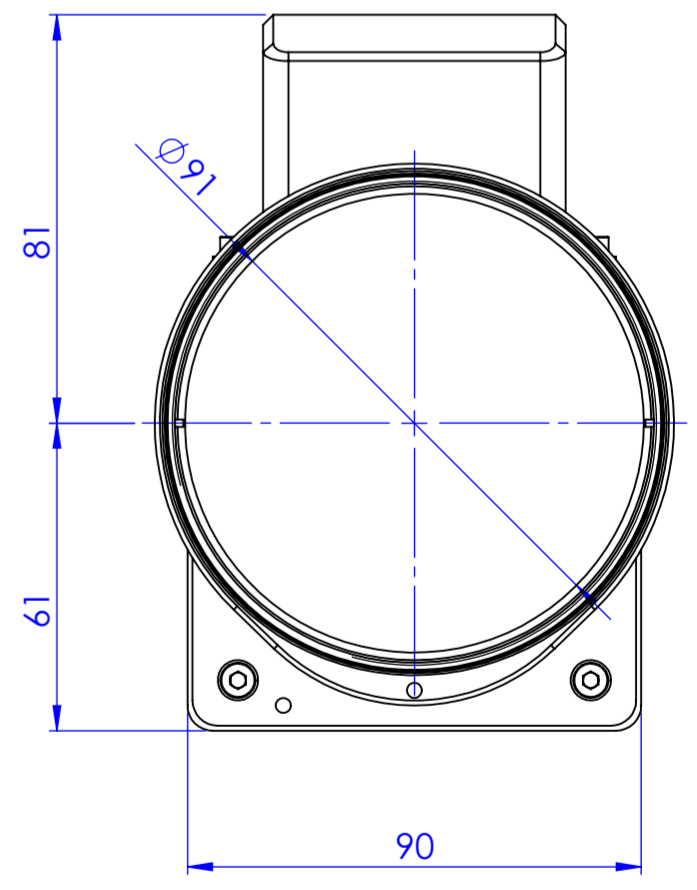
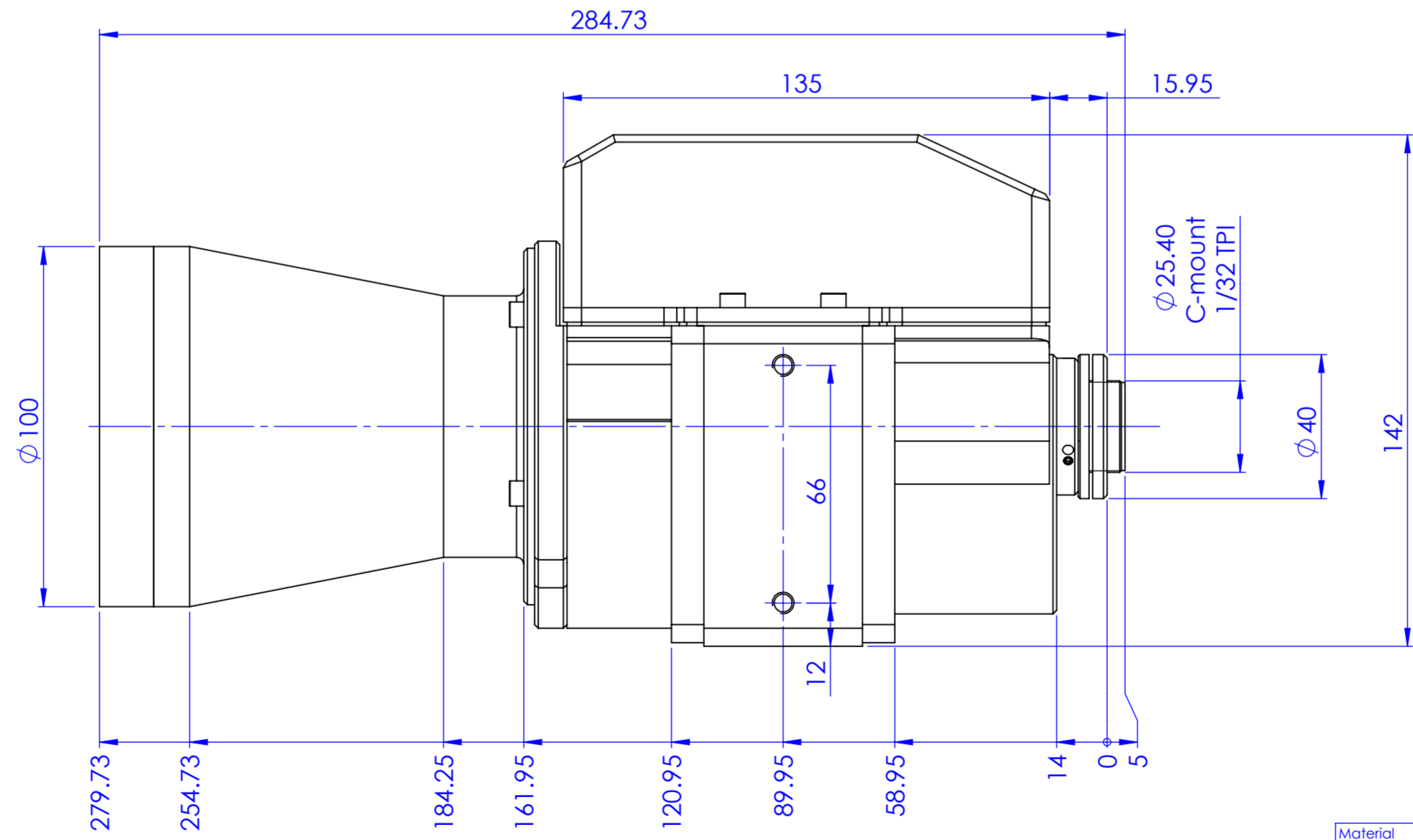
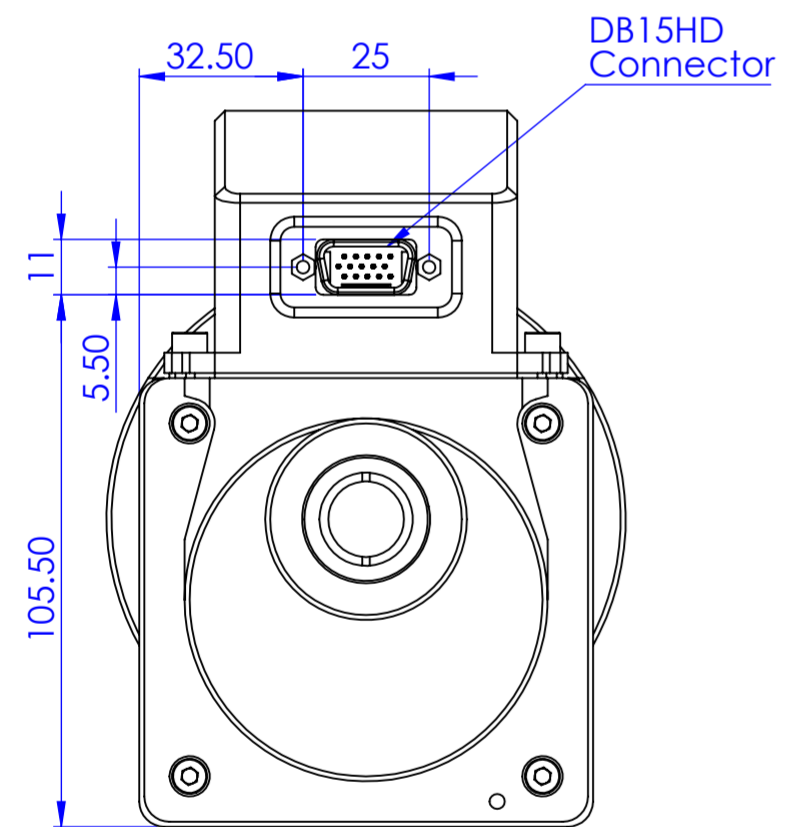
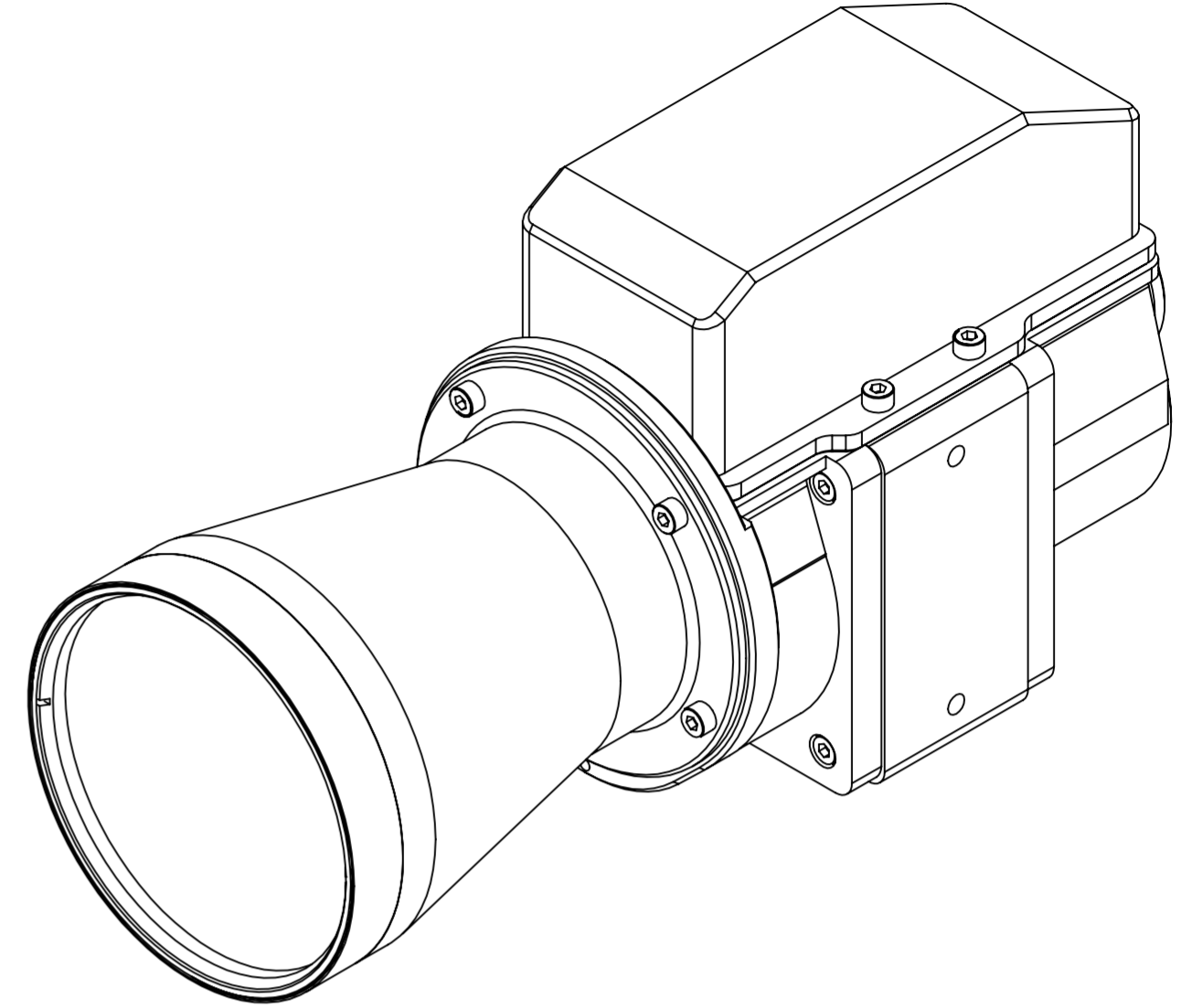
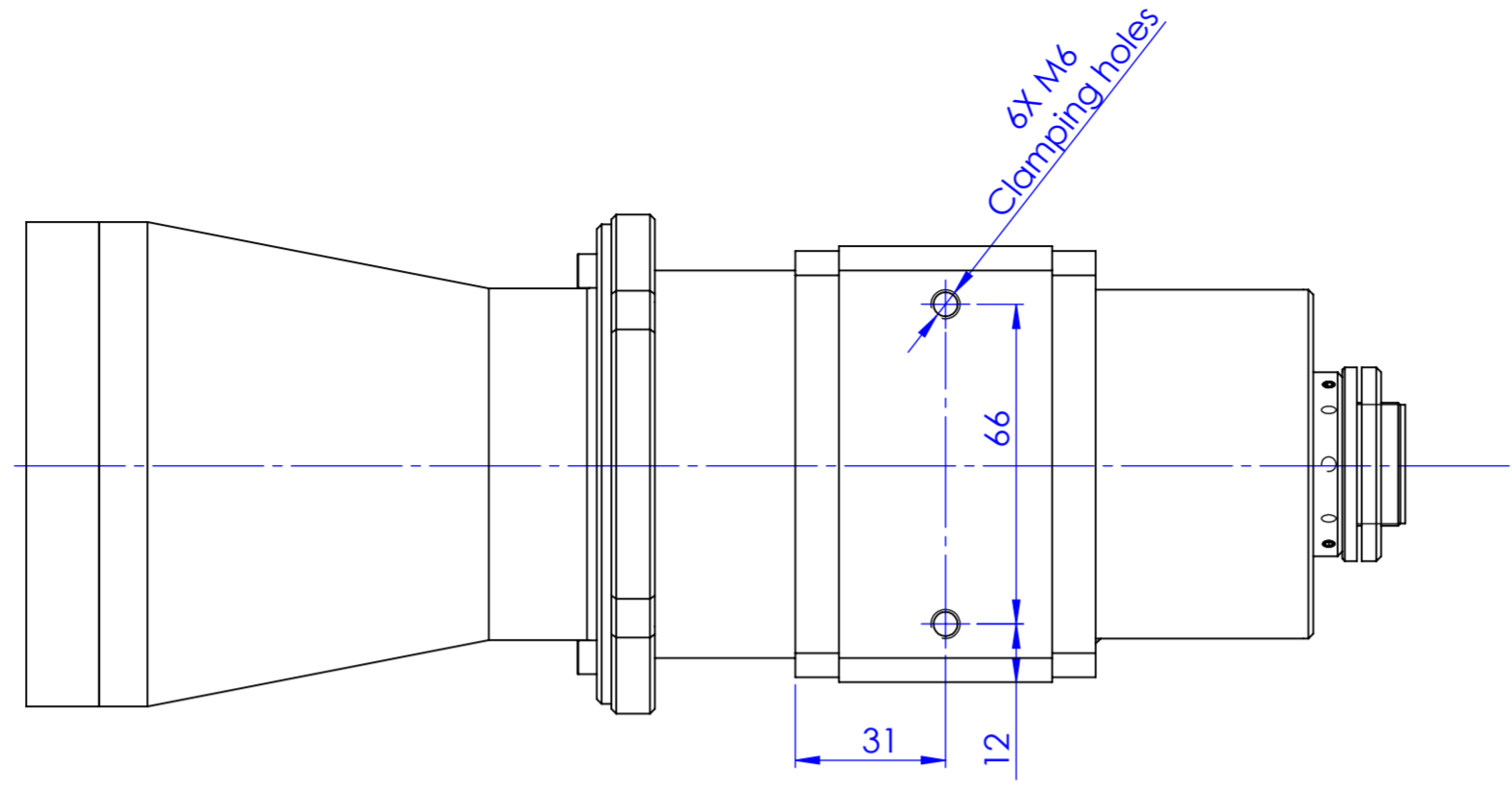


| Rev No. | Description | Date | Name |
|---------|-------------|------|------|
| | | | |
| | | | |
| | | | |



| | | | | | |
|---|------|----------|---------|--|---------|
| Material | N.A. | Mass | 2780 g | Scale | 1:1.5 |
| Surface treatment | N.A. | Part No. | CO27073 | Description | |
| Geometrical tolerance (ISO 2768-2) | | Class | K | Undimensioned bevels | 0.5x45° |
| Linear tolerance (ISO 2768-2) | | Class | m | Undimensioned radii | R 0.5 |
| 0.5 | >3+ | >6+ | >30+ | >120 | >400+ |
| +3 | 6 | 30 | 120 | +400 | +1000 |
| +0.1 | ±0.1 | ±0.2 | ±0.3 | ±0.5 | ±0.8 |
| | | | | ±1.2 | ±2 |
| Date | | Name | | Drawing No. | |
| Designed 20/08/2017 | | Santini | | DP 27073-A | |
| Drawn 26/09/2018 | | Ccharly | | Sheet 1/1 | |
| Checked 26/09/2018 | | Ccharly | | Secret and confidential - All rights reserved - No copy, dissemination or circulation is allowed unless specifically authorized in writing by OPTO ENGINEERING S.r.l. - Any violation shall be legally prosecuted. | |
| OPTO ENGINEERING S.r.l. - Mantova Italy - Tel. +39 0376 699111 - www.opto-engineering.com | | | | | |

