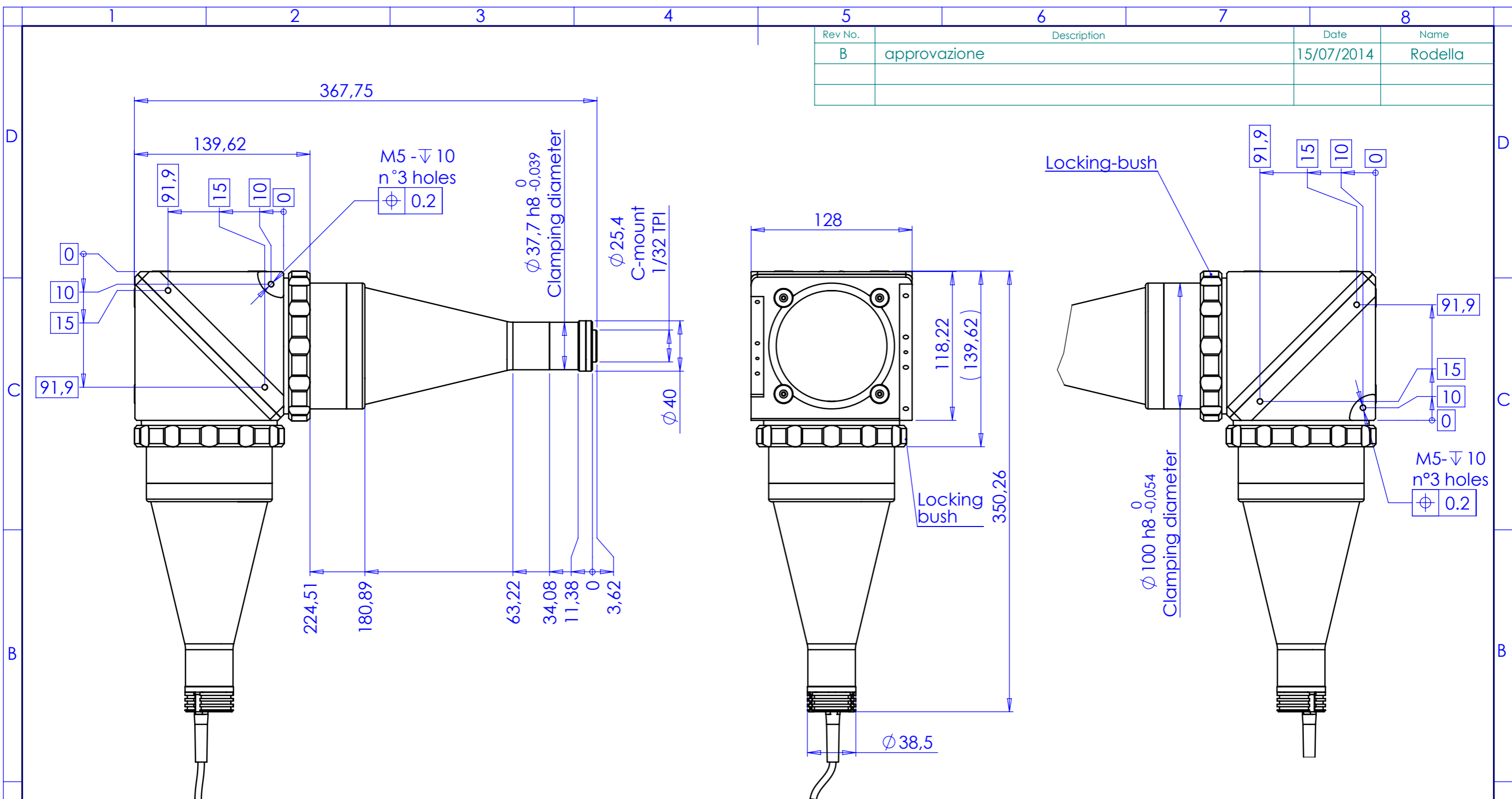


Rev No.	Description	Date	Name
B	approvazione	15/07/2014	Rodella



Material	N.A.	Mass	911 g	Scale	1:3					
Surface treatment	N.A.	Part No.	CO71661							
Geometrical tolerance (ISO 2768-2)	Class	K	Description							
Linear tolerance (ISO 2768-2)	Class	m	Undimensioned bevels	0,5x45°	TCCXQ014-G					
0.5 ±3	>3± 6	>6± 30	>30± 120	>120 ±400		Undimensioned radii				
±0.1	±0.1	±0.2	±0.3	±0.5	±0.8	±1.2	±2	R 0.5	Drawing No. DP 71661-B Sheet 1/1	
			Date	Name		Date		Name		
OPTO ENGINEERING S.r.l. - Mantova Italy - Tel. +39 0376 699111 - www.opto-engineering.com			Designed	03/07/2014 Rodella		Drawn	04/07/2014 Rodella			Checked

Secret and confidential - All rights reserved -
No copy, dissemination or circulation is allowed unless
specifically authorized in writing by OPTO ENGINEERING
S.r.l. - Any violation shall be legally prosecuted.

