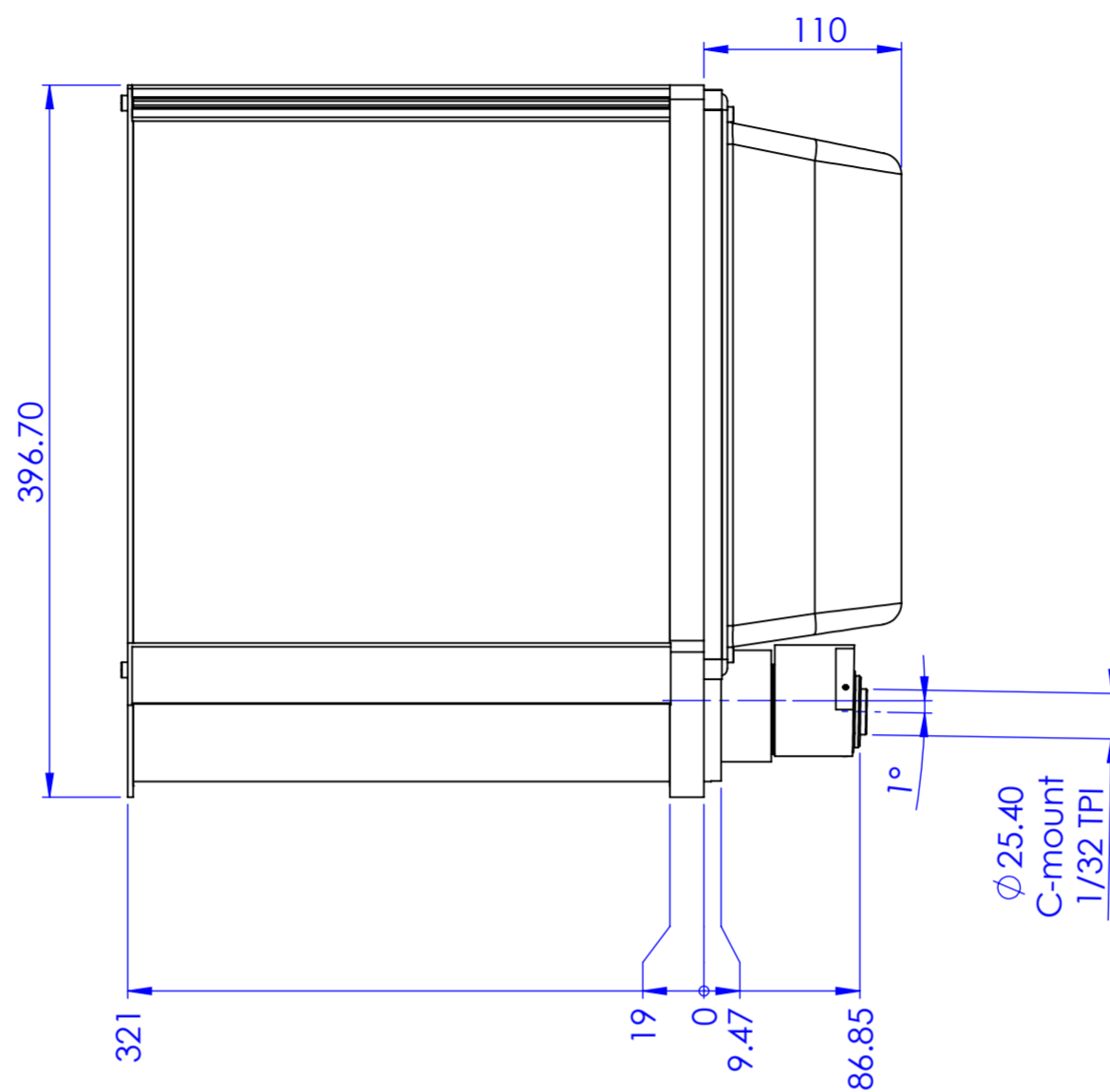
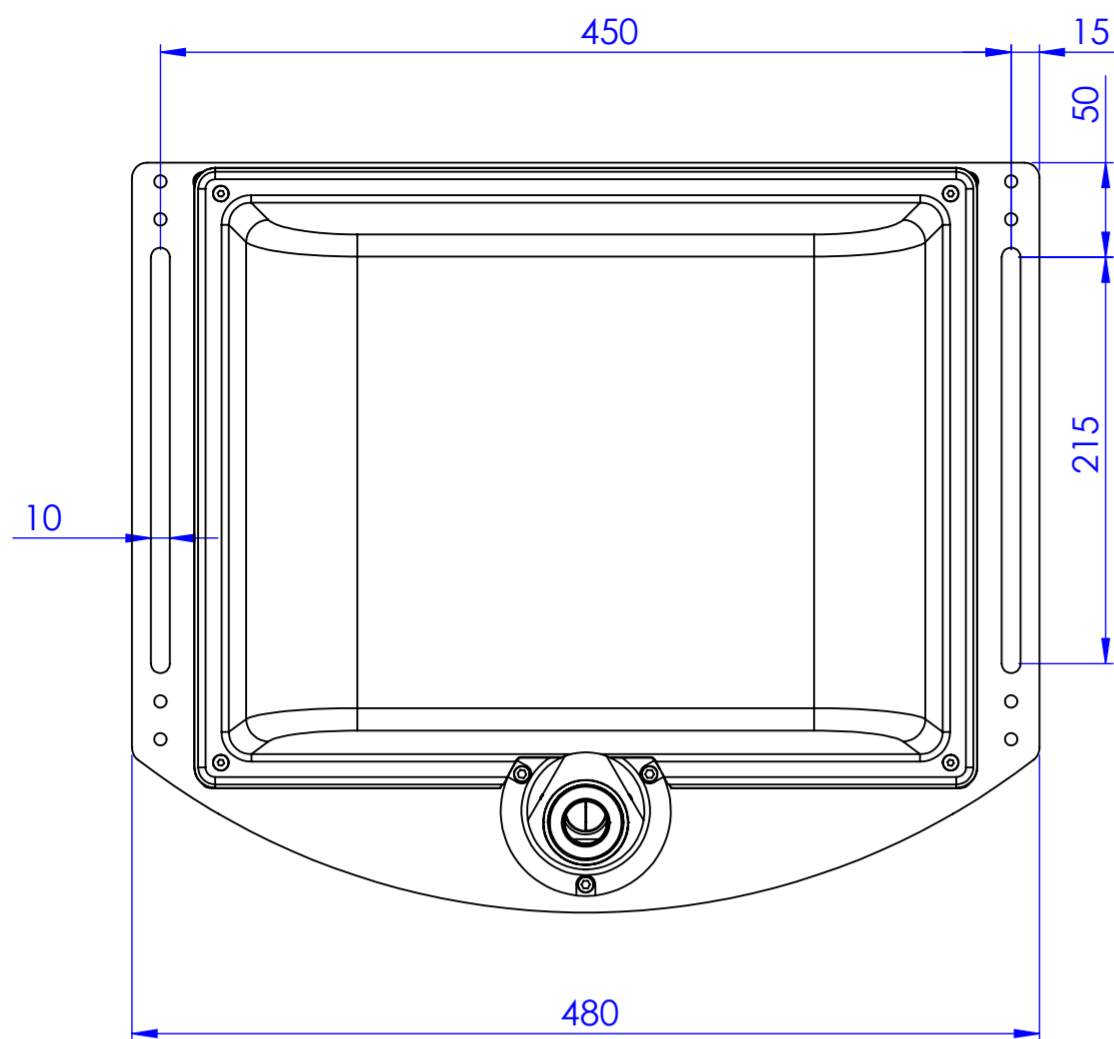
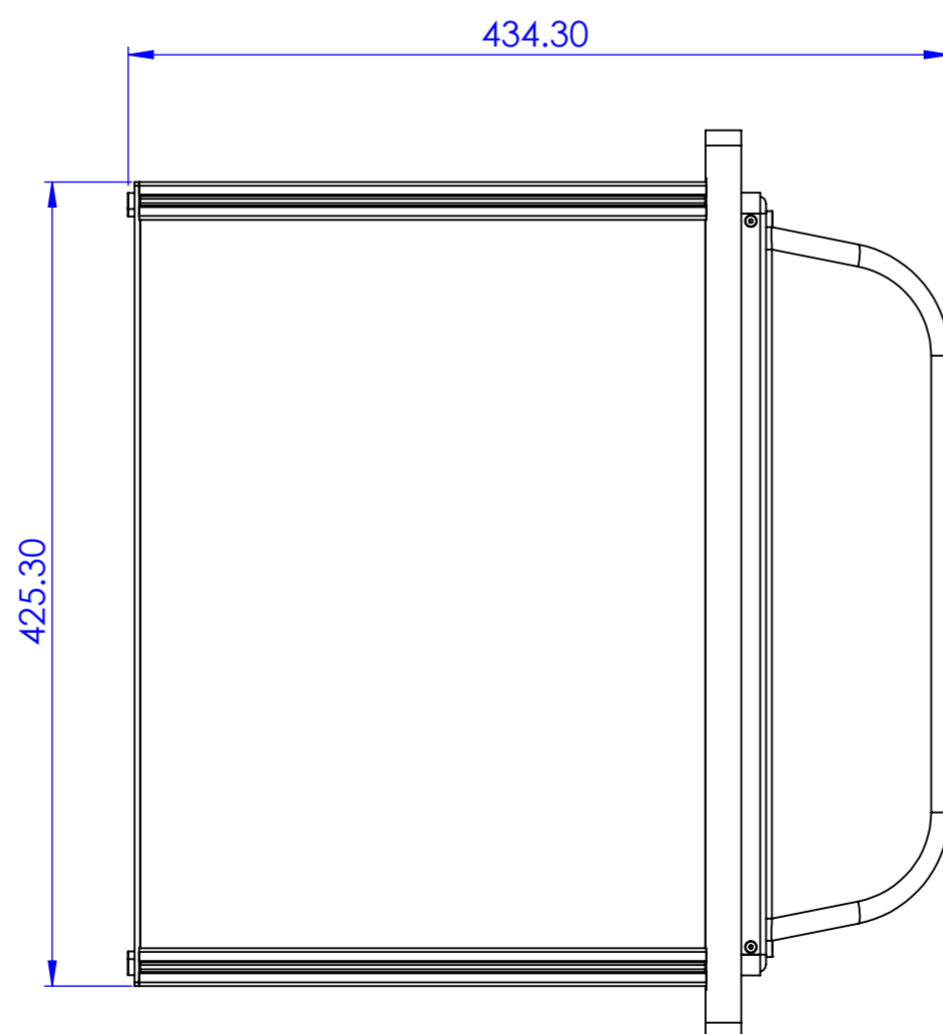
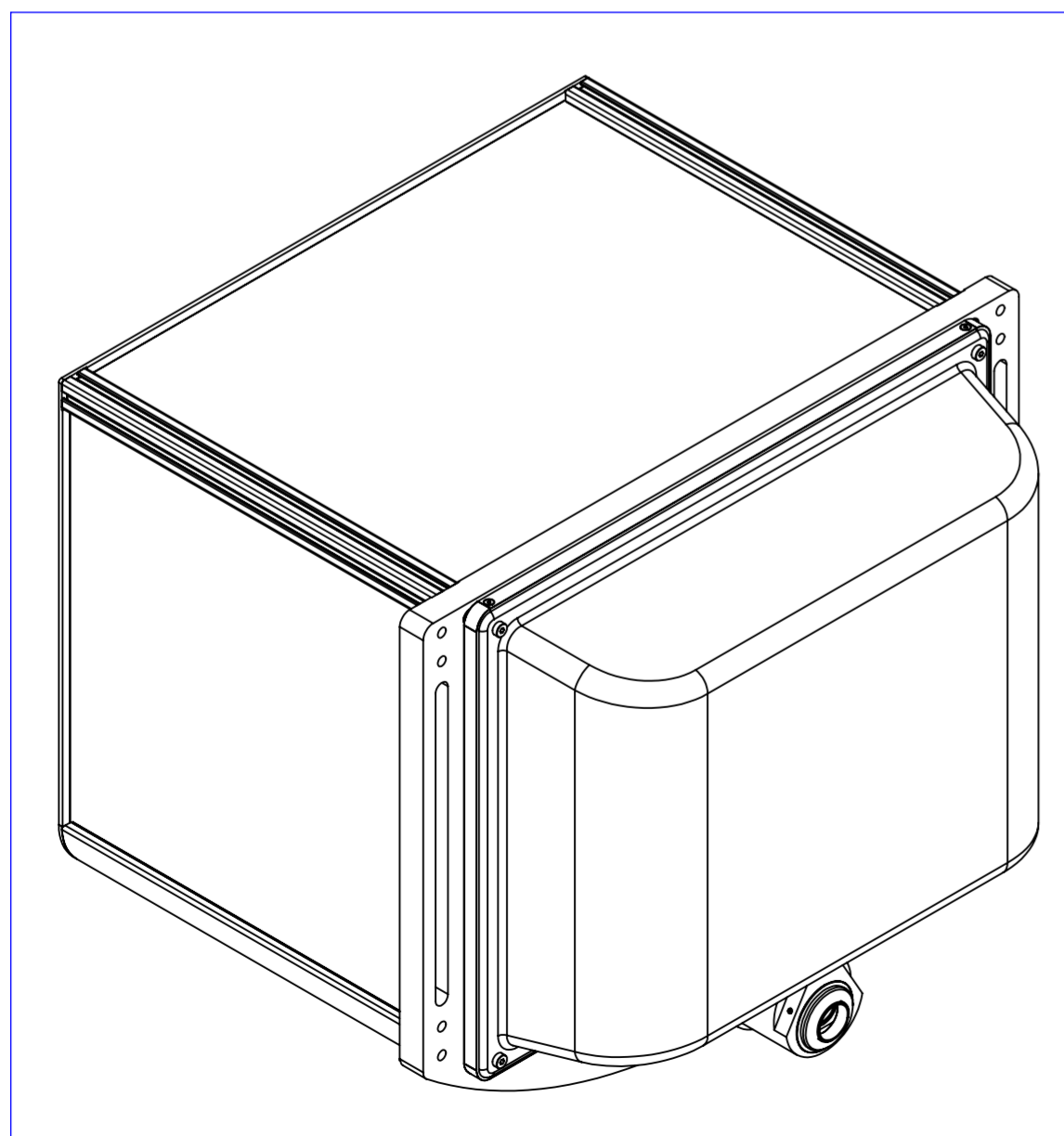
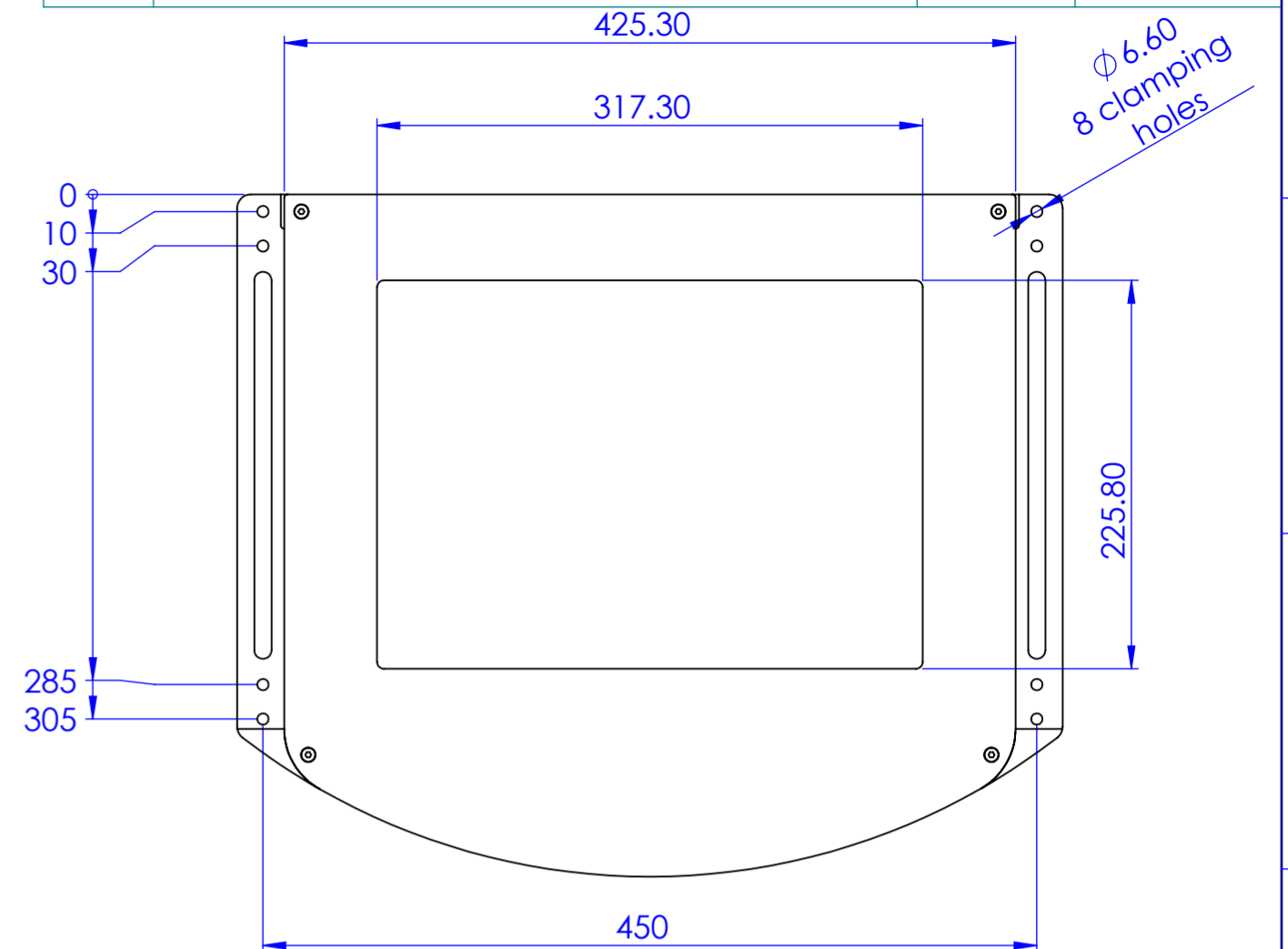


FOR MISSING DIMENSIONS SEE DW28595-A.STEP



Rev No.	Description	Date	Name



Material	N.A.	Mass	12803 g	Scale	1:4
Surface treatment	N.A.	Part No.	CO28595	Description	
Geometrical tolerance (ISO 2768-2)		Class	K	Undimensioned bevels	0.5x45°
Linear tolerance (ISO 2768-2)		Class	m	Undimensioned radii	R 0.5
0.5	>3±	>6±	>30±	>120	>400±
+3	6	30	120	+400	+1000
±0.1	±0.1	±0.2	±0.3	±0.5	±0.8
				±1.2	±2
Date		Name		Drawing No.	
Designed 08/11/2018		Vasconetto		TCCP23260	
Drawn 28/01/2019		Rodella		DP 28595-A	
Checked 26/09/2019		Ccharly		Sheet 1/1	
OPTO ENGINEERING S.r.l. - Mantova Italy - Tel. +39 0376 699111 - www.opto-engineering.com					
Secret and confidential - All rights reserved - No copy, dissemination or circulation is allowed unless specifically authorized in writing by OPTO ENGINEERING S.r.l. - Any violation shall be legally prosecuted.					