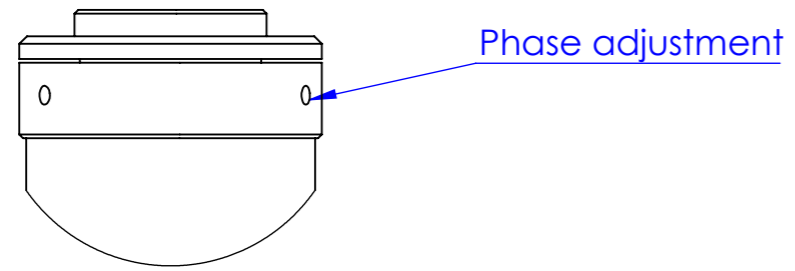
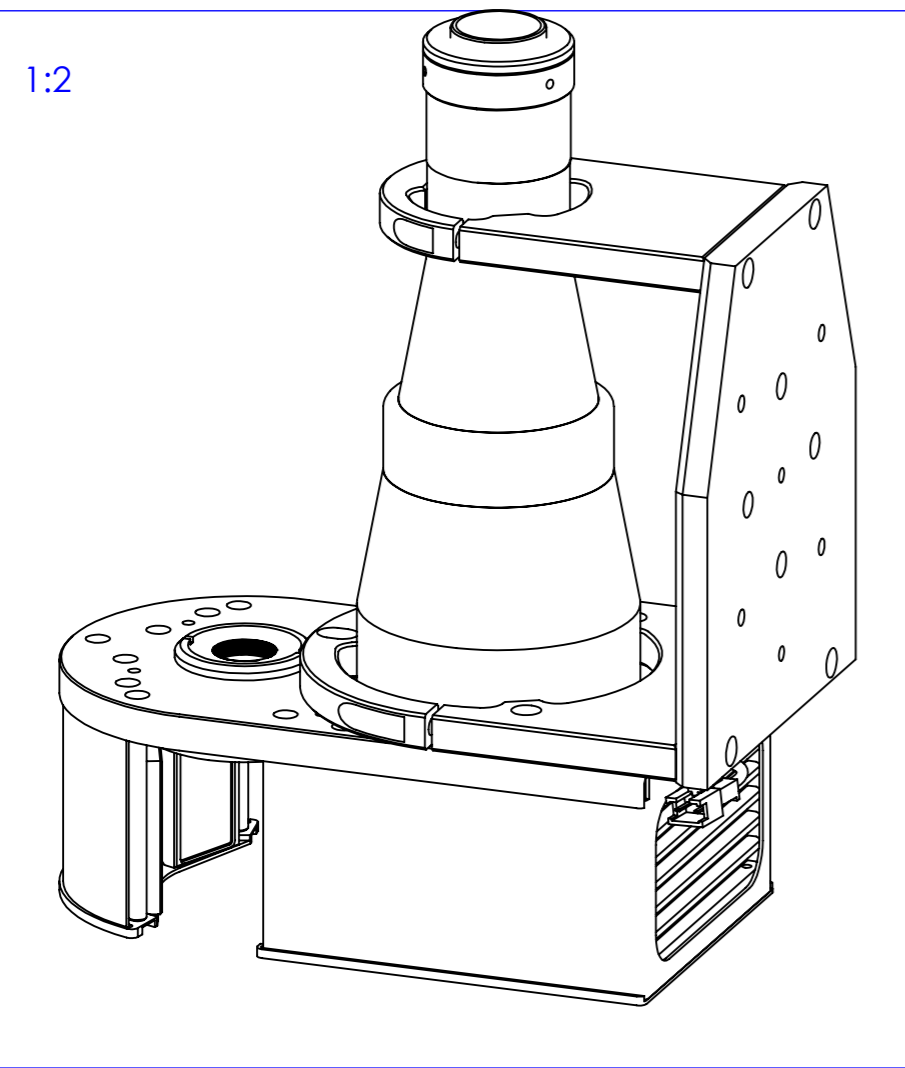


Rev No.	Description	Date	Name

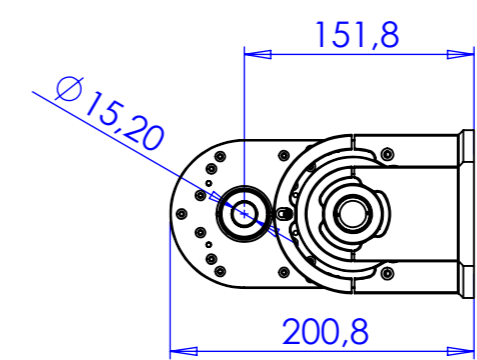
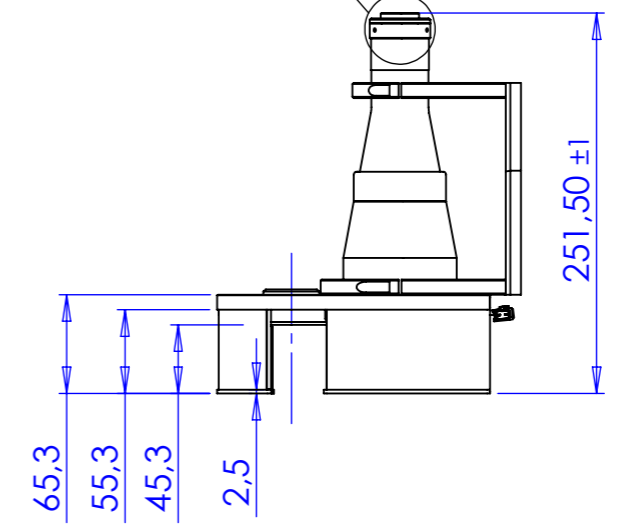
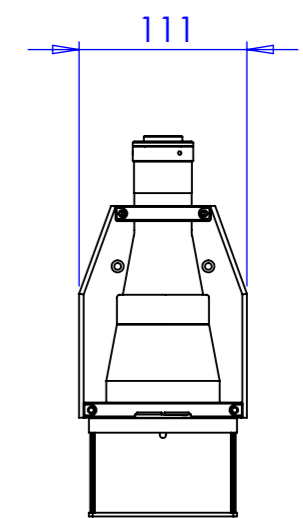
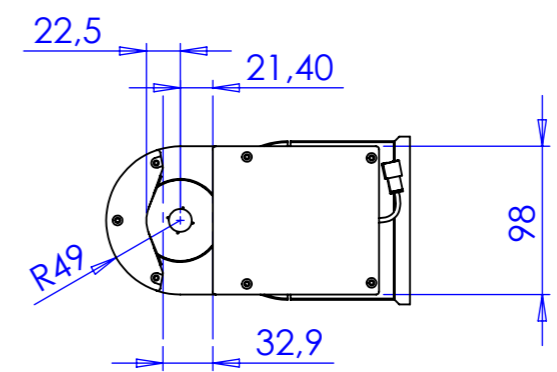
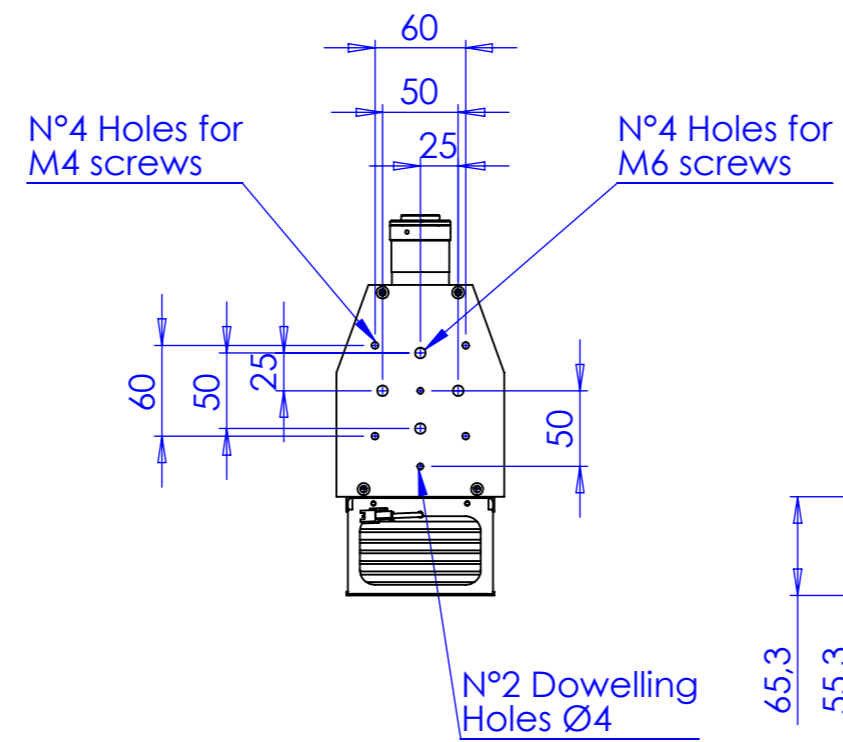


DETAIL C
SCALE 1:1

Phase adjustment



1:2



Material		N.A.		Mass		2089 g		Scale		1:5			
Surface treatment		N.A.		Part No.		CO21661							
Geometrical tolerance (ISO 2768-2)				Class		K		Undimensioned bevels		0,5x45°			
Linear tolerance (ISO 2768-2)				Class		m		Undimensioned radii		R 0,5			
0,5 ±3	>3÷ 6	>6÷ 30	>30÷ 120	>120 ±400	>400÷ 1000	>1000 ±2000	>2000 ±4000			Description			
±0,1	±0,1	±0,2	±0,3	±0,5	±0,8	±1,2	±2			TCCAGE 23048			
<p>OPTO ENGINEERING S.r.l. - Mantova Italy - Tel. +39 0376 699111 - www.opto-engineering.com</p>				Date		Name		Drawing No.		Sheet			
				Designed		25/03/2014		Santini		DP 21661-A		1/1	
				Drawn		08/11/2016		Vasconetto					
				Checked				Secret and confidential - All rights reserved - No copy, dissemination or circulation is allowed unless specifically authorized in writing by OPTO ENGINEERING S.r.l. - Any violation shall be legally prosecuted.					

all dimensions are in mm