

TCCAGE23096

Bi-telecentric multi-mirror system for 2/3" detectors

SPECIFICATIONS

Detector type		2/3"
Image size	(mm * mm)	8.5 x 7.1
Max. object diameter	(mm)	16
Max. object height	(mm)	68
Optical specifications		
Wavelength range	(nm)	450 .. 650
CTF @ 70 lp/mm	(%)	> 50
wF/# (1)		8
Mechanical specifications		
Width	(mm)	179
Length	(mm)	347
Height	(mm)	424
Mass	(g)	9154
Mount		C
Phase adjustment (2)		Yes
Electrical specifications		
Ring illumination voltage	(V, DC)	24
Ring illumination power	(W)	3
Coaxial illumination voltage	(V, DC)	24
Coaxial illumination power	(W)	15
Cable		CB244P1500 included

Last update: 2020-06-11

NOTES

- Working distance: distance between the front end of the mechanics and the object. Set this distance within +/- 3% of the nominal value for maximum resolution and minimum distortion.
- F/# = F-number, wF/# = working F-number, the real F-number of a lens when used as a macro.

COMPATIBLE PRODUCTS

Despite the efforts made to generate an error-free compatibility list, we always recommend to consult the Opto Engineering® technical support department before purchasing a compatible product. Opto Engineering® shall not be liable for any damage or malfunctioning caused by the incorrect selection of a compatible product.



LTRNOB series

LED ring illuminators - oblique type

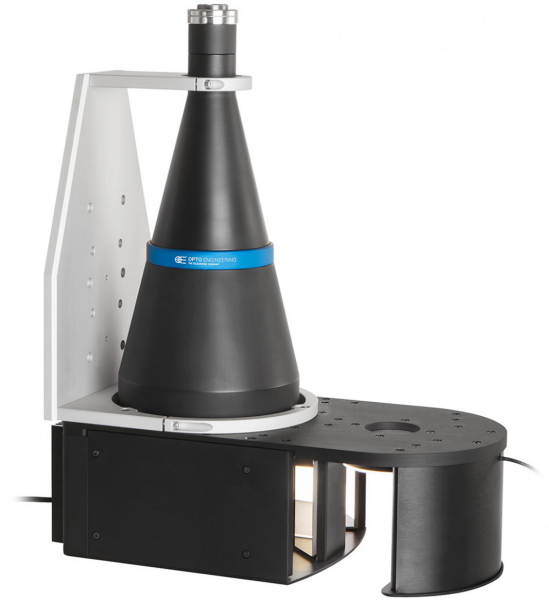
LTRN075R45	Ring LED illuminator, inner diameter 28 mm, oblique type, red 630 nm
LTRN075G45	Ring LED illuminator, inner diameter 28 mm, oblique type, green 525 nm
LTRN075B45	Ring LED illuminator, inner diameter 28 mm, oblique type, blue 470 nm
LTRN075W45	Ring LED illuminator, inner diameter 28 mm, oblique type, white



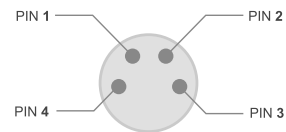
CB series

Cables

CB244P1501	Power cable, side 1 M8 connector straight, side 2 cable end - 2 m - type 2 labels
CB244P1501L	Power cable, side 1 M8 connector angled, side 2 cable end - 2 m - type 2 labels



CONNECTION



Device side - male pins
Front view

Pinout reference

Pin	Function
1	-
2	GND
3	-
4	Power supply (+24 V)



All product specifications and data are subject to change without notice to improve reliability, functionality, design or other. Photos and pictures are for illustration purposes only.



Accessories

Accessories and add-ons to make the most of Opto Engineering lenses.

CSCAGE096	Sample for alignment of TCCAGExx096
SPMI003	First surface mirror, active area 25x75 mm, mount type 1
SPPS002	Right angle prism, legs 33.3 mm, H 72 mm, mirror coating
RT-mvBC-X104iC	CMOS camera GIGE, 2064 x 1544 color, 1/1.8", 37 Hz, IR cut, C-mount, I/O
RT-mvBC-X105bC	CMOS camera GIGE, 2464 x 2056 Colour sensor, 2/3", 23.5 Hz, IR cut, C-mount, I/O



COE-G series

GenICam® PoE cameras

COE-023-M-POE-050-IR-C	Area Scan camera PYTHON 2000, CMOS, Global shutter, 1920 x 1200, 2.3 MP, 4.8 pix, 2/3", Gray, 51 fps, GigE, POE, C - mount, Glass filter
COE-023-C-POE-050-IR-C	Area Scan camera PYTHON 2000, CMOS, Global shutter, 1920 x 1200, 2.3 MP, 4.8 pix, 2/3", Color, 51 fps, GigE, POE, C - mount, Infrared cut filter



COE-U series

USB 3.0 GenICam® cameras

COE-050-M-USB-050-IR-C	Area Scan camera IMX264, CMOS, Global shutter, 2448 x 2048, 5 MP, 3.45 pix, 2/3", Gray, 35 fps, USB 3.0, C - mount, Glass filter
--	--



mvBlueFOX3-2 series

USB3 vision camera with Sony Pregius CMOS sensors

RT-mvBF3-2051a	USB3 Vision camera with Sony Pregius CMOS sensor IMX264
RT-mvBF3-2051	USB3 Vision camera with Sony Pregius CMOS sensor IMX250



mvBlueCOUGAR series

GigE & Dual GigE Vision cameras

RT-mvBC-X105b	Camera with interface GigE (1GB/s), sensor size 2/3", mpixel 5.07, resolution 2464 x 2056, sensor name IMX264, sensor type CMOS
RT-mvBC-XD105a	Camera with interface Dual GigE (2GB/s), sensor size 2/3", mpixel 5.01, resolution 2448 x 2048, sensor name IMX250, sensor type CMOS