

TCCAGE23048HP

High power bi-telecentric system for 2/3"

SPECIFICATIONS

Detector type		2/3"
Image size	(mm * mm)	8.5 x 7.1
Max. object diameter	(mm)	8
Max. object height	(mm)	32

Optical specifications

Wavelength range	(nm)	450 .. 650
CTF @ 70 lp/mm	(%)	> 55
wF/# (1)		8

Mechanical specifications

Width	(mm)	111
Length	(mm)	192.8
Height	(mm)	248
Mass	(g)	2750
Mount		C
Phase adjustment (2)		Yes

Electrical specifications (3)

Ring light		
LED voltage	(V)	< 25 (typ.)
LED current	(mA)	4000
LED power	(W)	100
Coaxial light		
LED voltage	(V)	< 30 (typ.)
LED current	(mA)	6000
LED power	(W)	180

Cable	included
-------	----------

Last update: 2020-06-11

NOTES

- Working distance: distance between the front end of the mechanics and the object. Set this distance within +/- 3% of the nominal value for maximum resolution and minimum distortion.
- F/# = F-number, wF/# = working F-number, the real F-number of a lens when used as a macro.
- Strobe only, constant current driving, Max Ton = 1 ms, max duty cycle 1%.

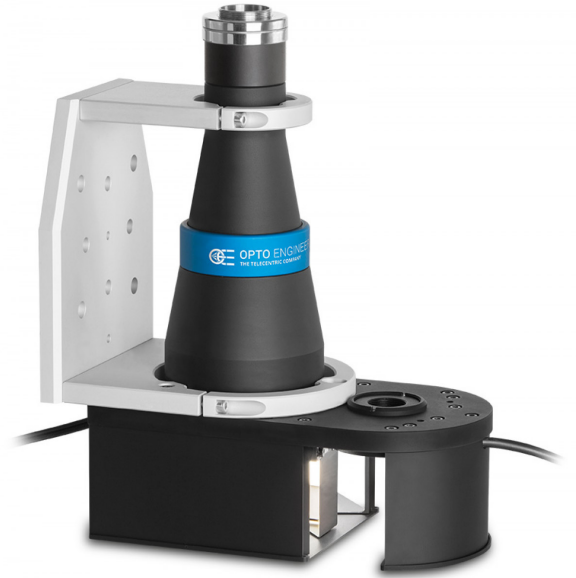
COMPATIBLE PRODUCTS

Despite the efforts made to generate an error-free compatibility list, we always recommend to consult the Opto Engineering® technical support department before purchasing a compatible product. Opto Engineering® shall not be liable for any damage or malfunctioning caused by the incorrect selection of a compatible product.

Accessories

Accessories and add-ons to make the most of Opto Engineering lenses.

CSCAGE048	Sample for alignment of TCCAGExx048
SPMI001	First surface mirror, active area 20x40 mm, mount type 1
SPMI002	First surface mirror, active area 20x40 mm, mount type 2
SPPS001	Right angle prism, legs 17 mm, H 39 mm, mirror coating



All product specifications and data are subject to change without notice to improve reliability, functionality, design or other. Photos and pictures are for illustration purposes only.



GenICam® PoE cameras

COE-023-M-POE-050-IR-C Area Scan camera PYTHON 2000, CMOS, Global shutter, 1920 x 1200, 2.3 MP, 4.8 pix, 2/3", Gray, 51 fps, GigE, POE, C - mount, Glass filter

COE-023-C-POE-050-IR-C Area Scan camera PYTHON 2000, CMOS, Global shutter, 1920 x 1200, 2.3 MP, 4.8 pix, 2/3", Color, 51 fps, GigE, POE, C - mount, Infrared cut filter



COE-U series

USB 3.0 GenICam® cameras

COE-050-M-USB-050-IR-C Area Scan camera IMX264, CMOS, Global shutter, 2448 x 2048, 5 MP, 3.45 pix, 2/3", Gray, 35 fps, USB 3.0, C - mount, Glass filter



mvBlueFOX3-2 series

USB3 vision camera with Sony Pregius CMOS sensors

RT-mvBF3-2051a USB3 Vision camera with Sony Pregius CMOS sensor IMX264

RT-mvBF3-2051 USB3 Vision camera with Sony Pregius CMOS sensor IMX250



mvBlueCOUGAR series

GigE & Dual GigE Vision cameras

RT-mvBC-X105b Camera with interface GigE (1GB/s), sensor size 2/3", mpixel 5.07, resolution 2464 x 2056, sensor name IMX264, sensor type CMOS

RT-mvBC-XD105a Camera with interface Dual GigE (2GB/s), sensor size 2/3", mpixel 5.01, resolution 2448 x 2048, sensor name IMX250, sensor type CMOS
