



TCCAGE12048HP

High power bi-telecentric system for 1/2"

SPECIFICATIONS

Detector type		1/2"
Image size	(mm * mm)	6.4 x 4.8
Max. object diameter	(mm)	8
Max. object height	(mm)	32

Optical specifications

Wavelength range	(nm)	450 .. 650
CTF @ 70 lp/mm	(%)	> 60
wF/# (1)		8

Mechanical specifications

Width	(mm)	111
Length	(mm)	192.8
Height	(mm)	248
Mass	(g)	2700
Mount		C
Phase adjustment (2)		Yes

Electrical specifications (3)

Ring light		
LED voltage	(V)	< 25 (typ.)
LED current	(mA)	4000
LED power	(W)	100
Coaxial light		
LED voltage	(V)	< 30 (typ.)
LED current	(mA)	6000
LED power	(W)	180

Cable	included
-------	----------

Last update: 2020-06-11

NOTES

- Working distance: distance between the front end of the mechanics and the object. Set this distance within +/- 3% of the nominal value for maximum resolution and minimum distortion.
- F/# = F-number, wF/# = working F-number, the real F-number of a lens when used as a macro.
- Strobe only, constant current driving, Max Ton = 1 ms, max duty cycle 1%.

COMPATIBLE PRODUCTS

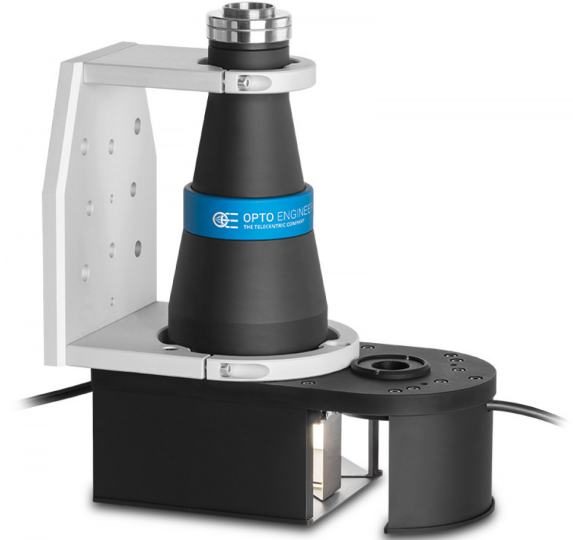
Despite the efforts made to generate an error-free compatibility list, we always recommend to consult the Opto Engineering® technical support department before purchasing a compatible product. Opto Engineering® shall not be liable for any damage or malfunctioning caused by the incorrect selection of a compatible product.



Accessories

Accessories and add-ons to make the most of Opto Engineering lenses.

CSCAGE048	Sample for alignment of TCCAGExx048
SPMI001	First surface mirror, active area 20x40 mm, mount type 1
SPMI002	First surface mirror, active area 20x40 mm, mount type 2
SPPS001	Right angle prism, legs 17 mm, H 39 mm, mirror coating



All product specifications and data are subject to change without notice to improve reliability, functionality, design or other. Photos and pictures are for illustration purposes only.



GenICam® PoE cameras

COE-013-M-POE-030-IR-C	Area Scan camera PYTHON 1300, CMOS, Global shutter, 1280 x 1024, 1.3 MP, 4.8 pix, 1/2", Gray, 90 fps, GigE, POE, C - mount, Glass filter
COE-013-C-POE-030-IR-C	Area Scan camera PYTHON 1300, CMOS, Global shutter, 1280 x 1024, 1.3 MP, 4.8 pix, 1/2", Color, 90 fps, GigE, POE, C - mount, Infrared cut filter
COE-032-M-POE-040-IR-C	Area Scan camera IMX265, CMOS, Global shutter, 2048 x 1536, 3.1 MP, 3.45 pix, 1/1.8", Gray, 37.5 fps, GigE, POE, C - mount, Glass filter
COE-032-C-POE-040-IR-C	Area Scan camera IMX265, CMOS, Global shutter, 2048 x 1536, 3.1 MP, 3.45 pix, 1/1.8", Color, 37.5 fps, GigE, POE, C - mount, Infrared cut filter
COE-063-M-POE-040-IR-C-B	Area Scan camera IMX178, CMOS, Rolling shutter, 3072 x 2048, 6.3 MP, 2.4 pix, 1/1.8", Gray, 17 fps, GigE, POE, C - mount, Glass filter
COE-063-C-POE-040-IR-C	Area Scan camera IMX178, CMOS, Rolling shutter, 3072 x 2048, 6.3 MP, 2.4 pix, 1/1.8", Color, 17 fps, GigE, POE, C - mount, Infrared cut filter
COE-122-M-POE-041-IR-C	Area Scan camera IMX226, CMOS, Rolling shutter, 4024 x 3036, 12.2 MP, 1.85 pix, 1/1.7", Gray, 9.6 fps, GigE, POE, C - mount, Glass filter
COE-122-C-POE-041-IR-C	Area Scan camera IMX226, CMOS, Rolling shutter, 4024 x 3036, 12.2 MP, 1.85 pix, 1/1.7", Color, 9.6 fps, GigE, POE, C - mount, Infrared cut filter



COE-U series

USB 3.0 GenICam® cameras

COE-013-M-USB-030-IR-C	Area Scan camera PYTHON 1300, CMOS, Global shutter, 1280 x 1024, 1.3 MP, 4.8 pix, 1/2", Gray, 170 fps, USB 3.0, C - mount, Glass filter
COE-013-C-USB-030-IR-C	Area Scan camera PYTHON 1300, CMOS, Global shutter, 1280 x 1024, 1.3 MP, 4.8 pix, 1/2", Color, 90 fps, USB 3.0, C - mount, Infrared cut filter
COE-063-M-USB-040-IR-C	Area Scan camera IMX178, CMOS, Rolling shutter, 3072 x 2048, 6.3 MP, 2.4 pix, 1/1.8", Gray, 42 fps, USB 3.0, C - mount, Glass filter
COE-063-C-USB-040-IR-C	Area Scan camera IMX178, CMOS, Rolling shutter, 3072 x 2048, 6.3 MP, 2.4 pix, 1/1.8", Color, 42 fps, USB 3.0, C - mount, Infrared cut filter



mvBlueFOX3-2 series

USB3 vision camera with Sony Pregius CMOS sensors

RT-mvBF3-2032a	USB3 Vision camera with Sony Pregius CMOS sensor IMX265
RT-mvBF3-2032	USB3 Vision camera with Sony Pregius CMOS sensor IMX252
RT-mvBF3-2064	USB3 vision camera with Sony Pregius CMOS sensor IMX178



mvBlueCOUGAR series

GigE & Dual GigE Vision cameras

RT-mvBC-X104i	Camera with interface GigE (1GB/s), sensor size 1/1.8", mpixel 3.19, resolution 2064 x 1544, sensor name IMX265, sensor type CMOS
RT-mvBC-XD104h	Camera with interface Dual GigE (2GB/s), sensor size 1/1.8", mpixel 3.19, resolution 2064 x 1544, sensor name IMX252, sensor type CMOS