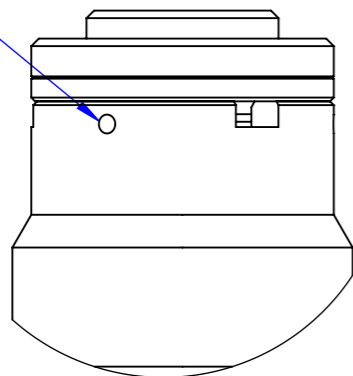


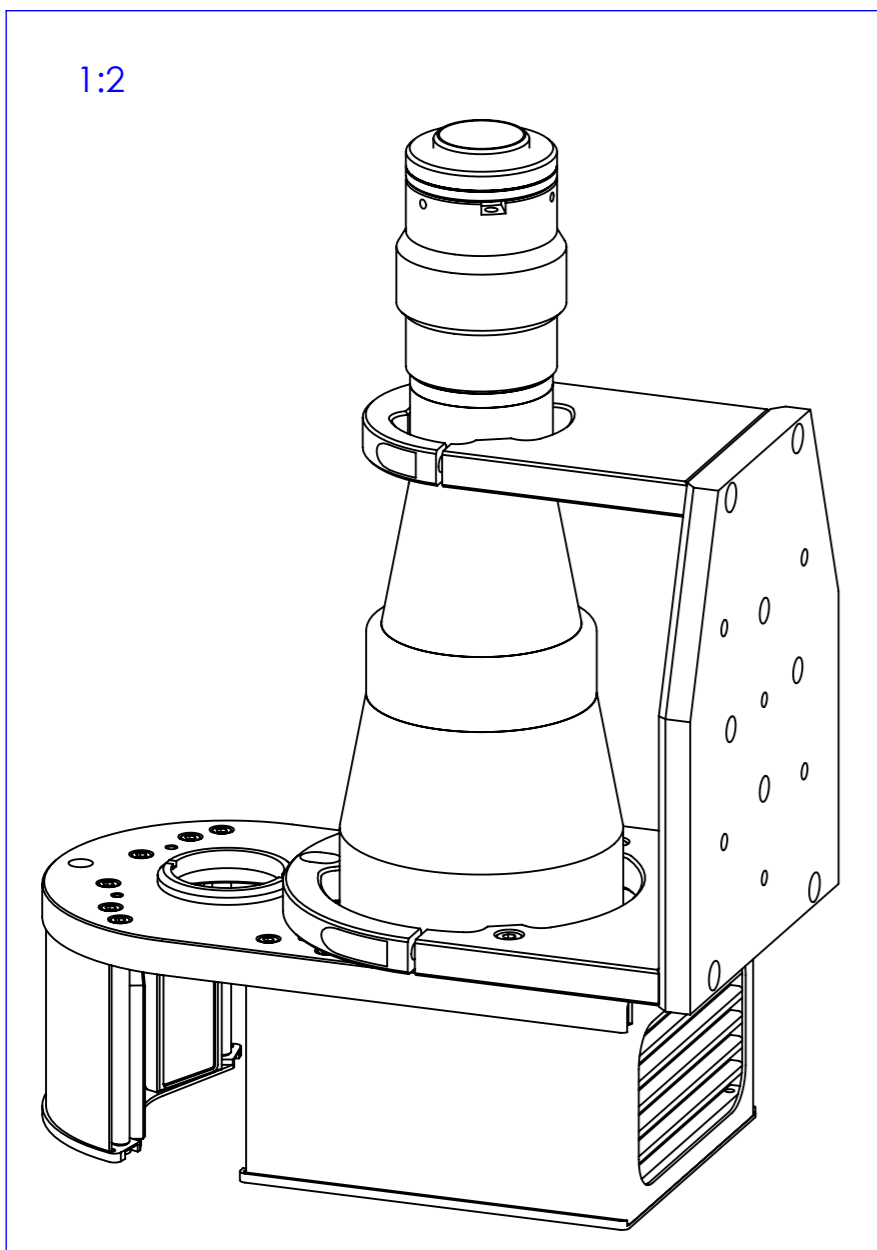
FOR MISSING DIMENSIONS SEE DW30063-A.STEP

Phase adjustment

DETTAGLIO A SCALA 1:1



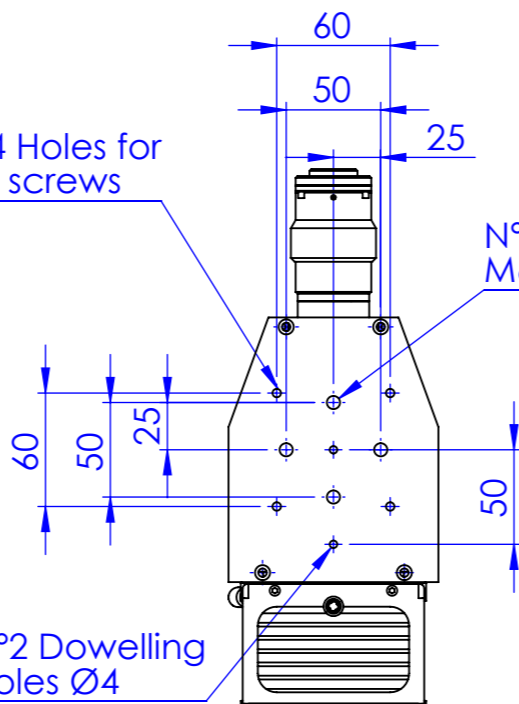
1:2



N°4 Holes for M4 screws

N°4 Holes for M6 screws

N°2 Dowelling Holes Ø4

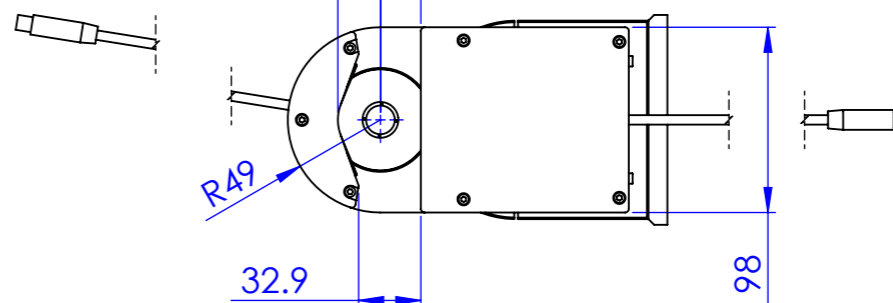


22.50
21.4

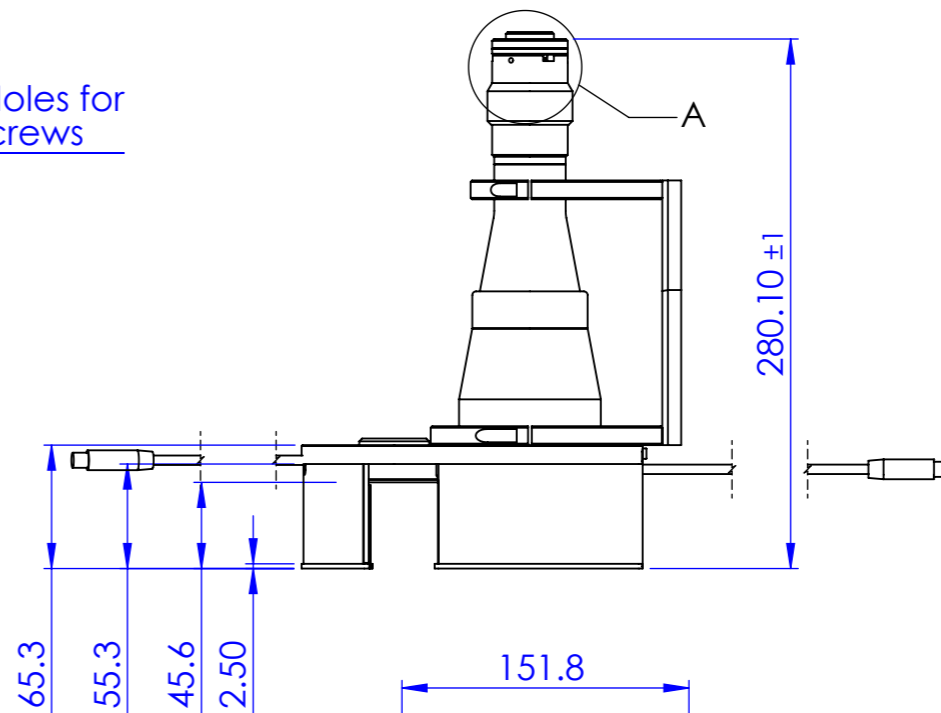
R49

32.9

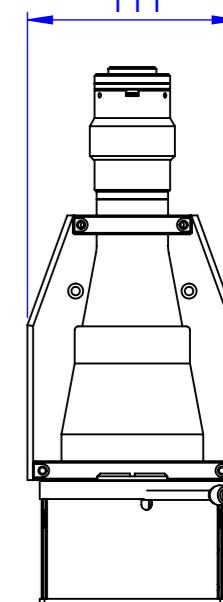
98



280.10 ±1

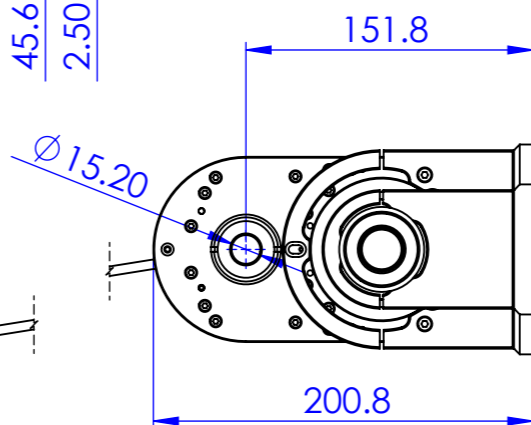


111



Cable lenght 270 mm.

Cable lenght 282 mm.



Material		N.A.		Mass		2254,092 g		Scale		1:4	
Surface treatment		N.A.		Part No.		CO30063					
Geometrical tolerance (ISO 2768-2)				Class		K		Undimensioned bevels		0,5x45°	
Linear tolerance (ISO 2768-2)				Class		m		Undimensioned radii		R 0.5	
0.5 ±3	>3± 6	>6± 30	>30± 120	>120 ±400	>400± 1000	>1000 ±2000	>2000 ±4000			Description	
±0.1	±0.1	±0.2	±0.3	±0.5	±0.8	±1.2	±2			TCCAGE2MHR048HP-C	
<p>OPTO ENGINEERING S.r.l. - Mantova Italy - Tel. +39 0376 699111 - www.opto-engineering.com</p>				Date		Name		Drawing No.		Sheet	
				Designed		Santini		DP 30063-A		1/1	
				Drawn		Rodella					
				Checked		Vasconetto		Secret and confidential - All rights reserved - No copy, dissemination or circulation is allowed unless specifically authorized in writing by OPTO ENGINEERING S.r.l. - Any violation shall be legally prosecuted.			

all dimensions are in mm