

1 2 3 4 5 6 7 8

D

C

B

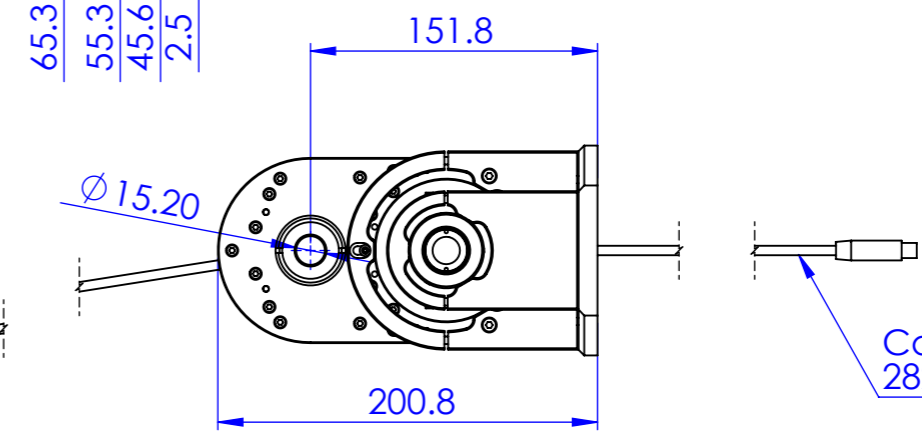
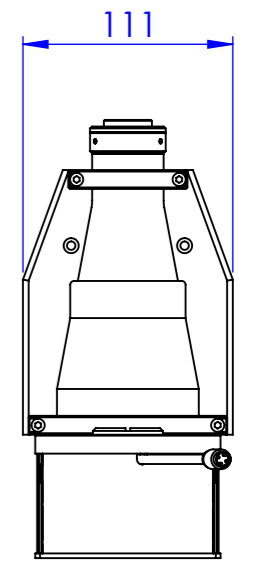
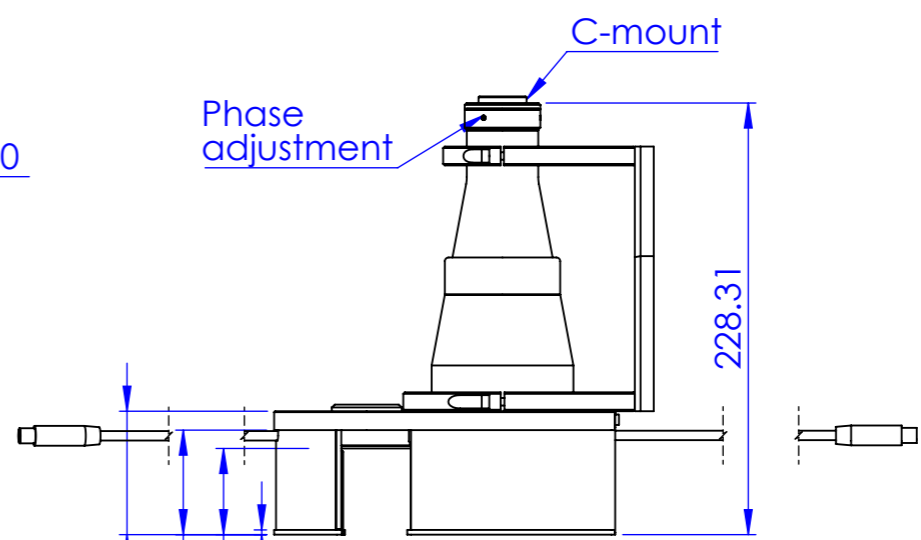
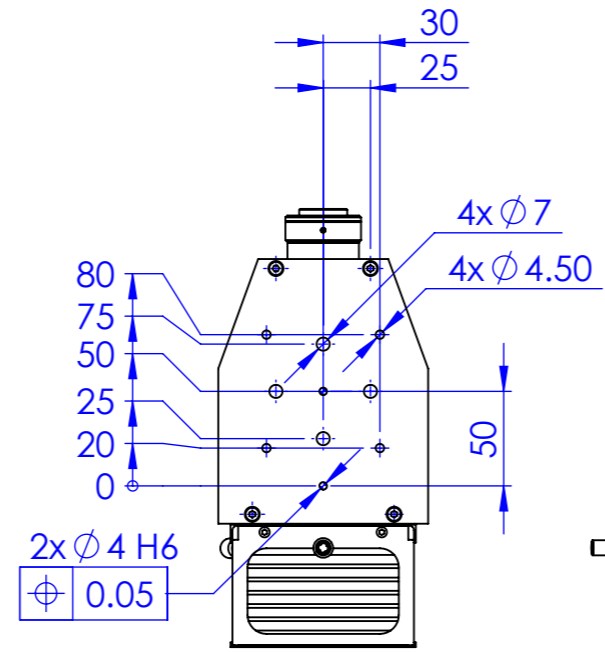
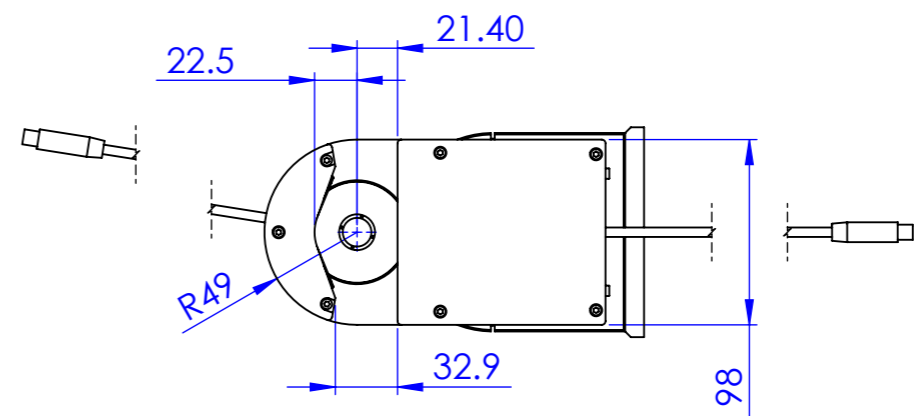
A

D

C

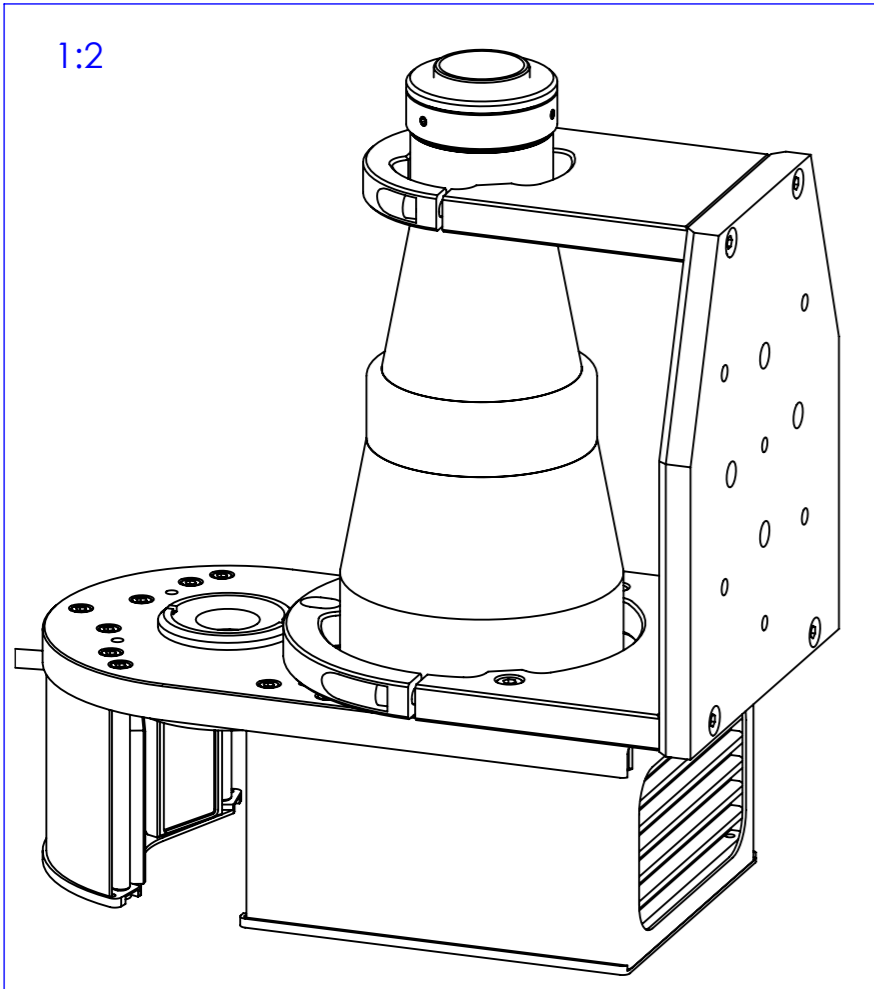
B

A



Cable length 270 mm

1:2



Material		N.A.		Mass		2011 g		Scale		1:4	
Surface treatment		N.A.		Part No.		CO30055					
Geometrical tolerance (ISO 2768-2)				Class		K		Undimensioned bevels		0.5x45°	
Linear tolerance (ISO 2768-2)				Class		m		Undimensioned radii		R 0.5	
0.5	>3	>6	>30	>120	>400	>1000	>2000			Description	
±3	±6	±30	±120	±400	±1000	±2000	±4000			TCCAGE12048HP	
±0.1	±0.1	±0.2	±0.3	±0.5	±0.8	±1.2	±2			Drawing No.	
				Date		Name		Drawing No.		Sheet	
				25/03/2014		Santini		DP 30055-B		1/1	
				05/06/2020		Rodella					
				26/06/2020		Vasconetto					
										Secret and confidential - All rights reserved - No copy, dissemination or circulation is allowed unless specifically authorized in writing by OPTO ENGINEERING S.r.l. - Any violation shall be legally prosecuted.	
OPTO ENGINEERING S.r.l. - Mantova, Italy - Tel. +39 0376699111 - www.opto-e.com											

all dimensions are in mm

1 2 3 4 5 6 7 8

0 1 2 3 4 5 6 7 8 9 10