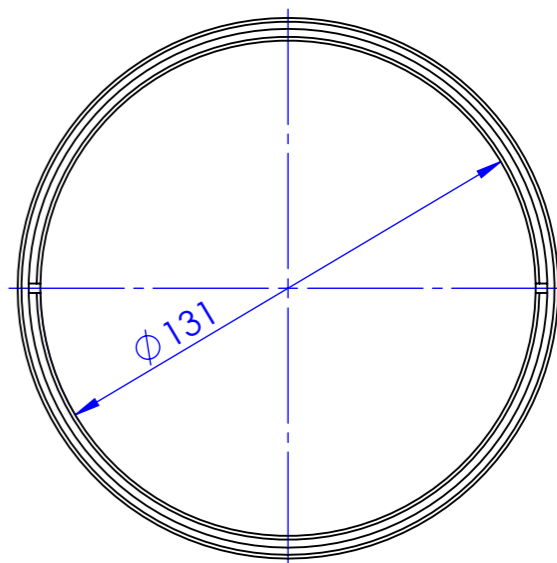
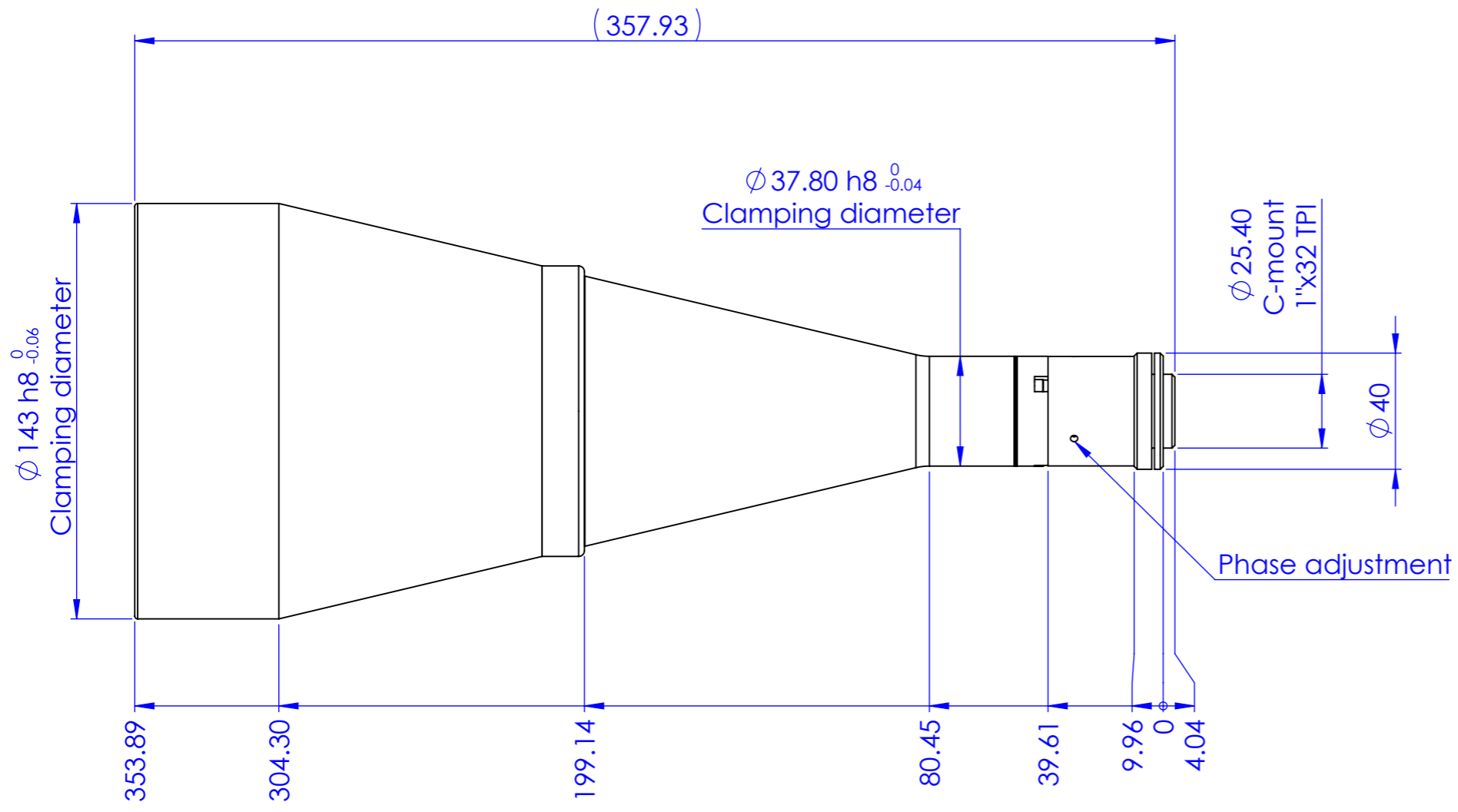


| Rev. | Author | Description | Date | Approved by |
|------|------------|--------------------------------|------------|-------------|
| B | Ccharly | Aggiornata lunghezza obiettivo | 02/07/2019 | Vasconetto |
| C | Vasconetto | Aggiornato indicazioni mount | 04/09/2020 | Vasconetto |



| | | | | | | | | | | | |
|--|------|----------|------|------------|-------|-------------|-------|----------------------|---------|-------------|--|
| Material | | N.A. | | Mass | | 2256 g | | Scale | | 1:5 | |
| Surface treatment | | N.A. | | Part No. | | CO26382 | | | | | |
| Geometrical tolerance (ISO 2768-2) | | | | | | | | Class | | K | |
| Linear tolerance (ISO 2768-2) | | | | | | | | Class | | m | |
| 0.5 | >3± | >6± | >30± | >120 | >400± | >1000 | >2000 | Undimensioned bevels | 0.5x45° | | |
| ±3 | 6 | 30 | 120 | ±400 | 1000 | ±2000 | ±4000 | Undimensioned radii | R 0.5 | | |
| ±0.1 | ±0.1 | ±0.2 | ±0.3 | ±0.5 | ±0.8 | ±1.2 | ±2 | Description | | TC3MHR096-C | |
| OPTO ENGINEERING | | Date | | Name | | Drawing No. | | Sheet | | | |
| | | Designed | | Rodella | | DP 26382-C | | 1/1 | | | |
| | | Drawn | | 05/07/2018 | | newbie1 | | | | | |
| Checked | | | | | | | | | | | |
| all dimensions are in mm OPTO ENGINEERING S.r.l. - Mantova Italy - Tel. +39 0376 699111 - www.opto-engineering.com | | | | | | | | | | | |
| Secret and confidential - All rights reserved - No copy, dissemination or circulation is allowed unless specifically authorized in writing by OPTO ENGINEERING S.r.l. - Any violation shall be legally prosecuted. | | | | | | | | | | | |