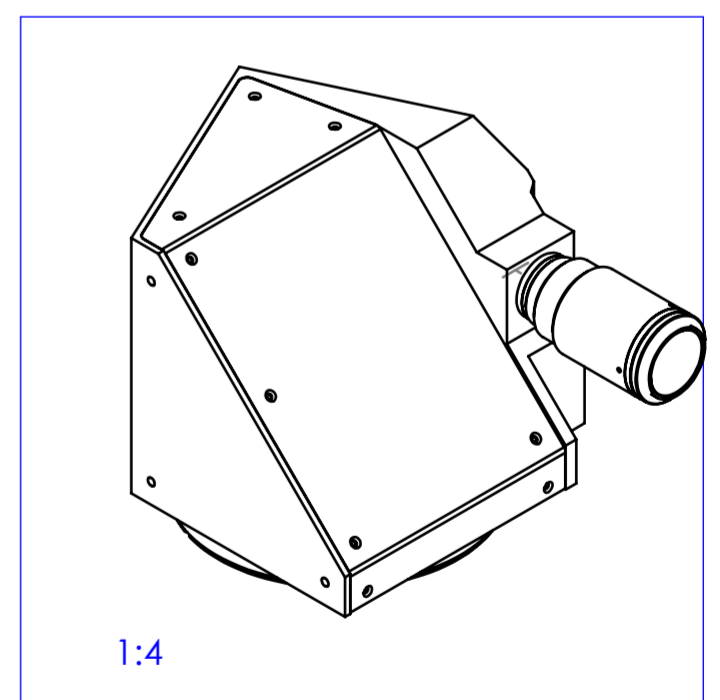
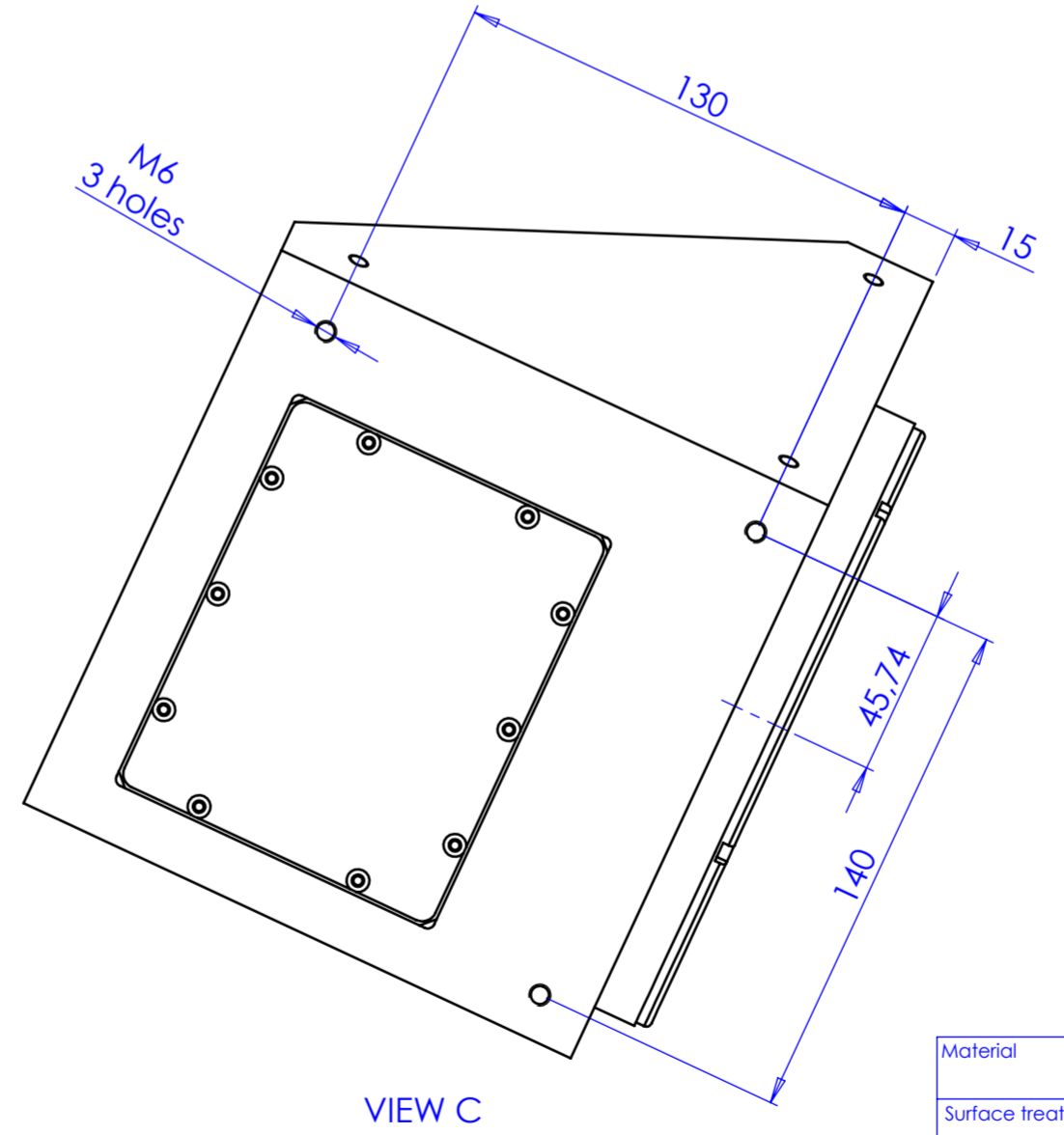
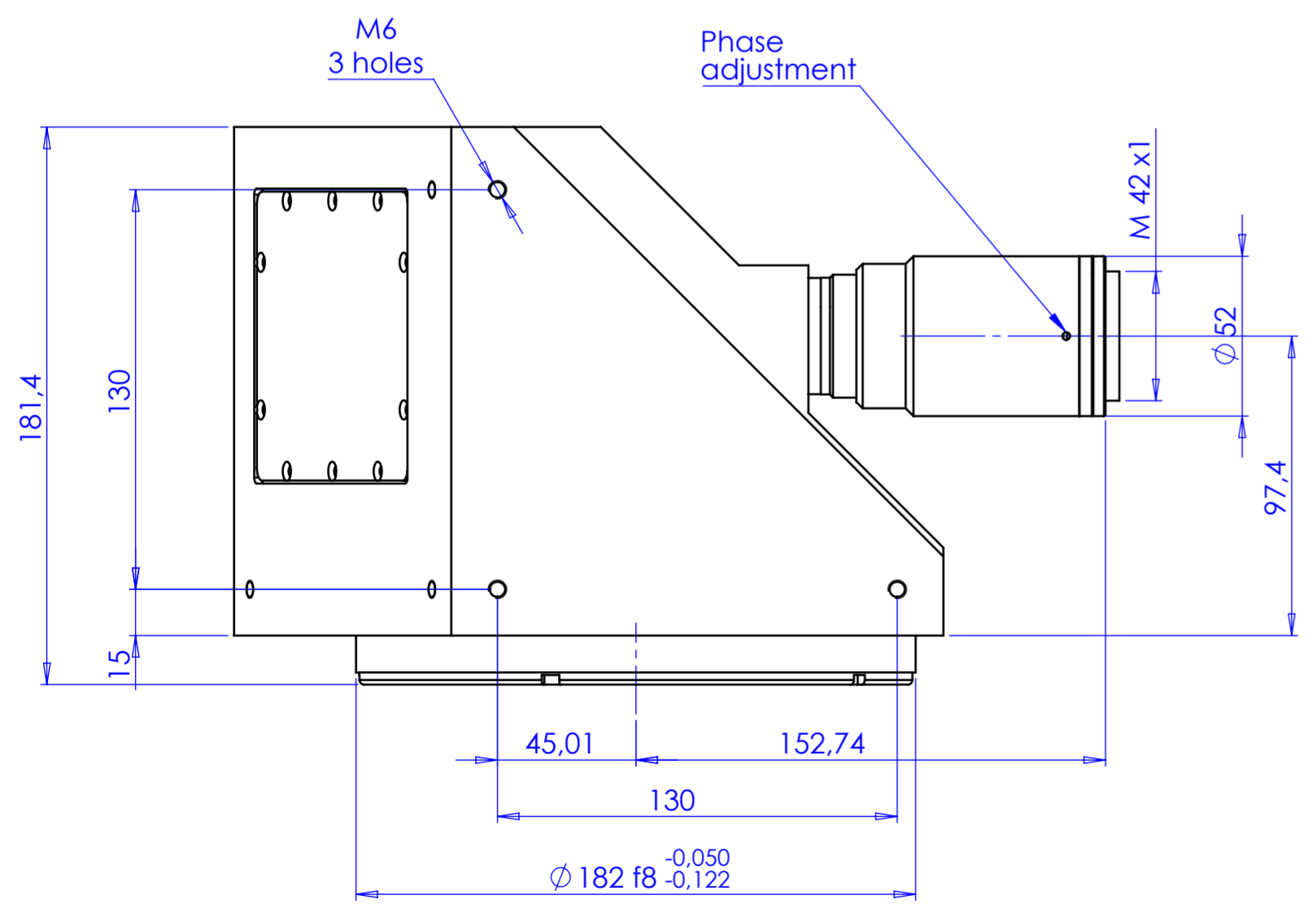
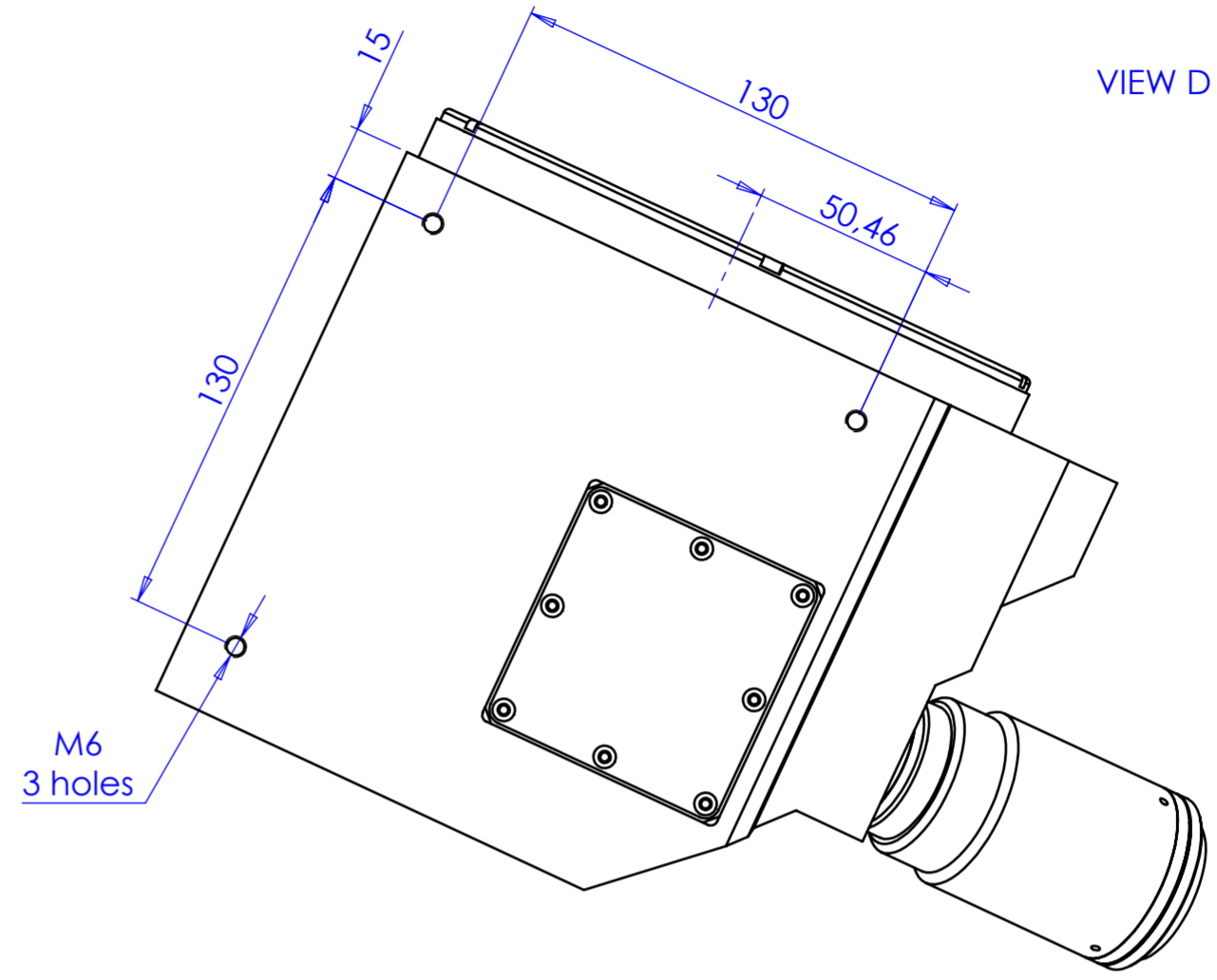
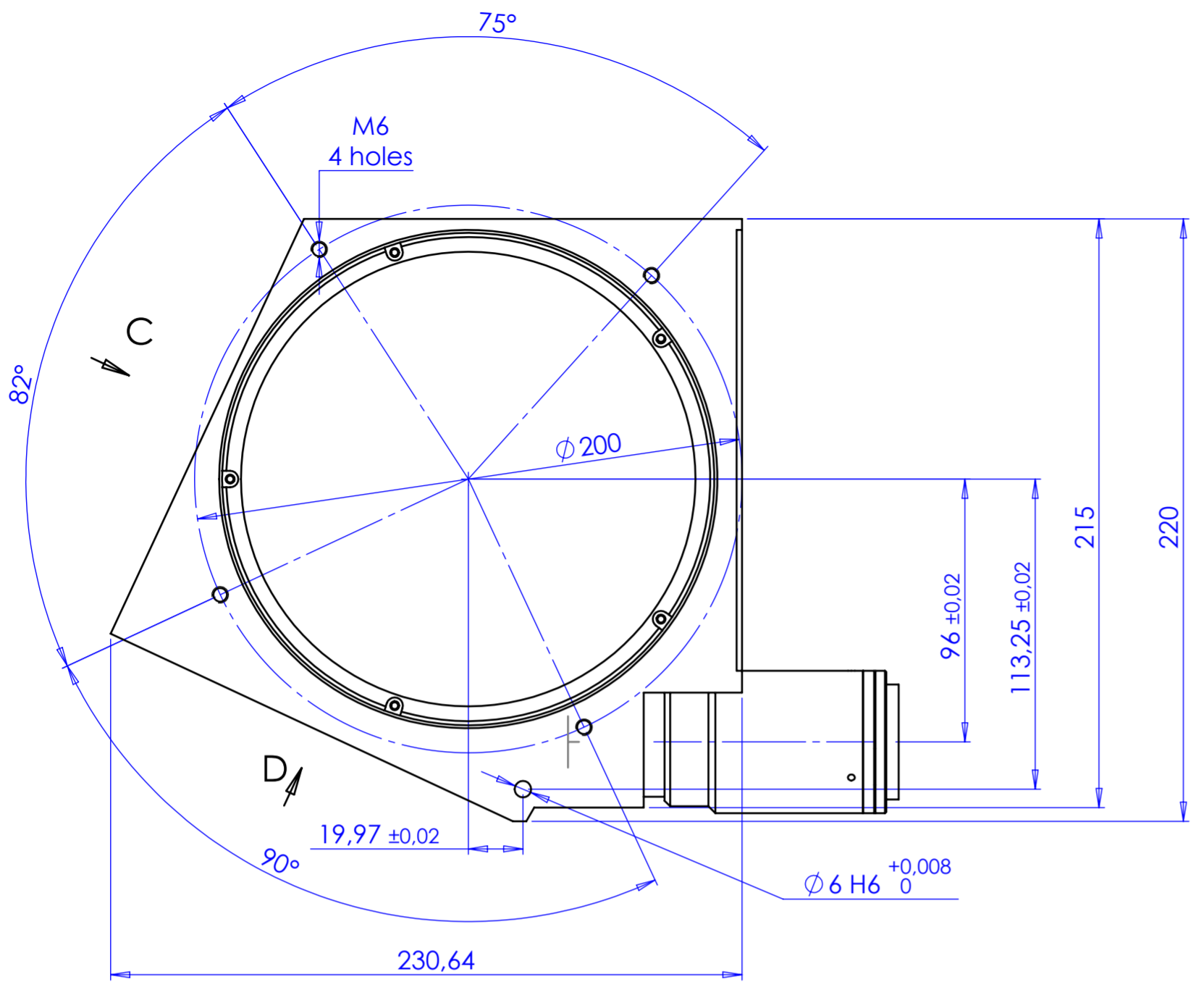


Rev No.	Description	Date	Name



Material	N.A.	Mass	9932 g	Scale	1:2					
Surface treatment	N.A.	Part No.	CO26992							
Geometrical tolerance (ISO 2768-2)	Class	K	Undimensioned bevels	0.5x45°	Description					
Linear tolerance (ISO 2768-2)	Class	m	Undimensioned radii	R 0.5	TCCR4M120-E					
0.5	>3+	>6+	>30+	>120	>400+	>1000	>2000	>4000		
+3	6	30	120	+400	1000	+2000	+4000			
± 0.1	± 0.1	± 0.2	± 0.3	± 0.5	± 0.8	± 1.2	± 2			
all dimensions are in mm		Date		Name						
Designed		14/03/2017		Vasconetto						
Drawn		17/04/2018		Rizzotto						
Checked										
Drawing No.		DP 26992-A		Sheet						
				1/1						
<p>OPTO ENGINEERING S.r.l. - Mantova Italy - Tel. +39 0376 699111 - www.opto-engineering.com</p> <p>Secret and confidential - All rights reserved - No copy, dissemination or circulation is allowed unless specifically authorized in writing by OPTO ENGINEERING S.r.l. - Any violation shall be legally prosecuted.</p>										