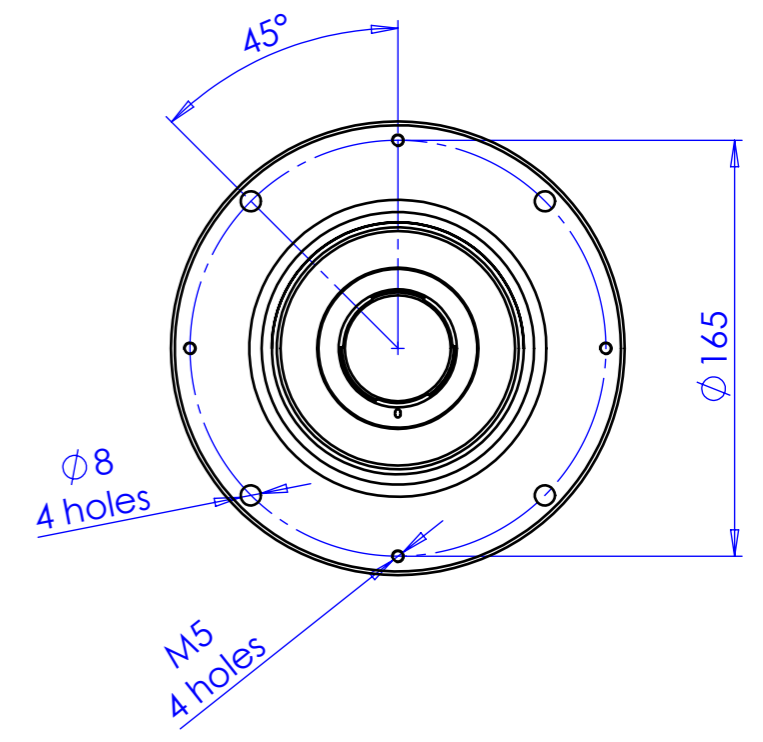
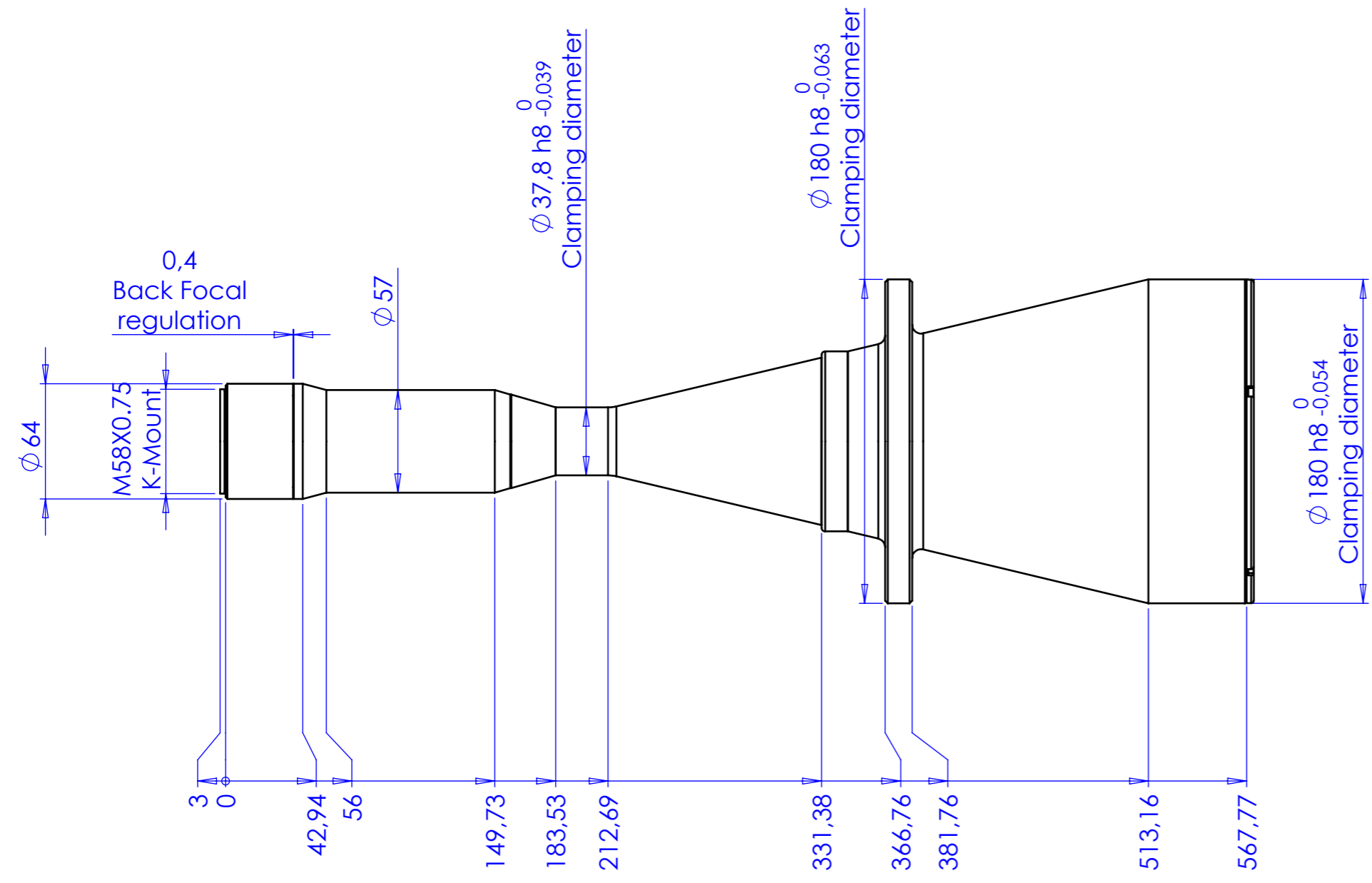


Rev No.	Description	Date	Name



Material	N.A.	Mass	5318 g	Scale	1:3
Surface treatment	N.A.	Part No.	CO71326		
Geometrical tolerance (ISO 2768-2)	Class	K	Undimensioned bevels	0,5x45°	Description TC16M120-K
Linear tolerance (ISO 2768-2)	Class	m	Undimensioned radii	R 0.5	
0,5 ±3	>3± 6	>6± 30	>30± 120	>120 ±400	>400± 1000
±0.1	±0.1	±0.2	±0.3	±0.5	±0.8
					±1.2
					±2
 OPTO ENGINEERING S.r.l. - Mantova Italy - Tel. +39 0376 699111 - www.opto-engineering.com	Date	Name	Drawing No.	Sheet	
	Designed	13/11/2014	Santini	DP 71326-A	1/1
	Drawn	27/11/2018	Ccharly		
	Checked				
<i>Secret and confidential - All rights reserved - No copy, dissemination or circulation is allowed unless specifically authorized in writing by OPTO ENGINEERING S.r.l. - Any violation shall be legally prosecuted.</i>					

all dimensions are in mm