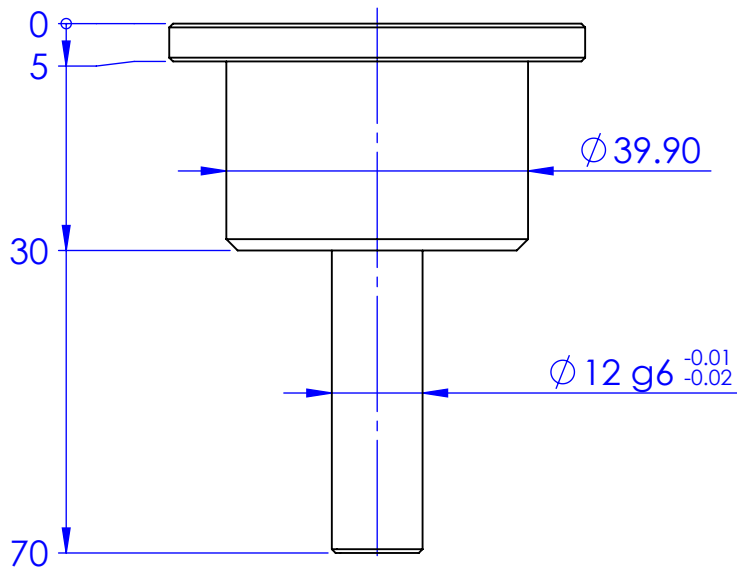
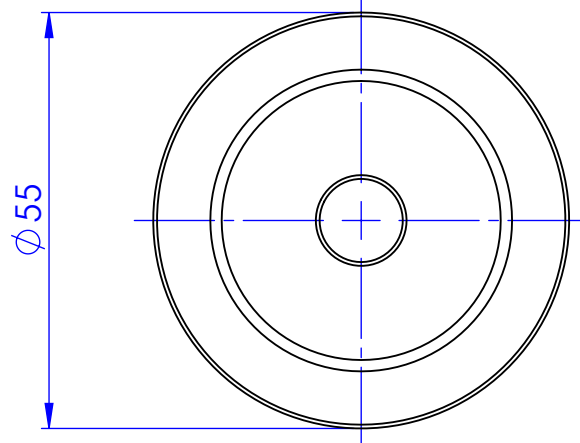


1

2

3

4



Material		N.A.				Mass	165 g	Scale	1:1
Surface treatment		N.A.				Part No. CO23529			
Geometrical tolerance (ISO 2768-2)		Class		K		Undimensioned bevels		0.5x45°	
Linear tolerance (ISO 2768-2)		Class		m		Undimensioned radii		R 0.5	
0.5	>3÷	>6÷	>30÷	>120	>400÷	>1000	>2000	Description	
±3	6	30	120	±400	±1000	±2000	±4000	CSCAGE096	
±0.1	±0.1	±0.2	±0.3	±0.5	±0.8	±1.2	±2	Drawing No.	
		Date		Name		Drawing No.		Sheet	
		Designed		22/01/2015		Rodella		1/1	
		Drawn		16/02/2022		Rizzotto		DP 23529-A	
Checked		16/02/2022		Rizzotto		<i>Secret and confidential - All rights reserved - No copy, dissemination or circulation is allowed unless specifically authorized in writing by OPTO ENGINEERING S.r.l. - Any violation shall be legally prosecuted.</i>			
OPTO ENGINEERING S.r.l. - Mantova, Italy - Tel. +39 0376699111 - www.opto-e.com									

1

2

3

4