

PCBPN013

Boroscopic probe for 1/3" detectors, 4 mm probe diam

SPECIFICATIONS

Detector type		1/3"
Image circle Ø	(mm)	3.4

Field of view (diameter x height)

Minimum	(mm x mm)	5.5 x 2.8
Maximum	(mm x mm)	25 x 15

Optical specifications

Wavelength range	(nm)	450 .. 650
Viewing angle	(°)	65
CTF @ 50 lp/mm	(%)	>20 @ 35 lp/mm
wF/#		30

Mechanical specifications

Diameter	(mm)	4
Probe length	(mm)	64.0
Total Length	(mm)	78 - 81
Mass	(g)	70.0
Mount		C

Electrical specifications

Continuous mode (1)

LED voltage	(V)	N.A.
Max LED forward current	(mA)	N.A.
LED power	(W)	N.A.

Pulsed mode (2)

LED voltage	(V)	N.A.
Max LED forward current	(mA)	N.A.
LED power	(W)	N.A.

Last update: 2020-08-25

NOTES

Constant voltage operation.

Constant current operation, max Ton = 1 ms, max duty cycle = 1%.

ORDERING INFORMATION

1/2" sensor suggested, since image could be decentered

COMPATIBLE PRODUCTS

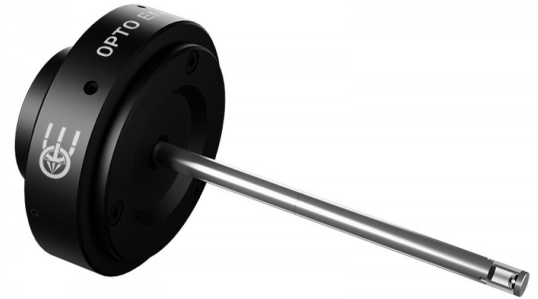
Despite the efforts made to generate an error-free compatibility list, we always recommend to consult the Opto Engineering® technical support department before purchasing a compatible product. Opto Engineering® shall not be liable for any damage or malfunctioning caused by the incorrect selection of a compatible product.



COE-G series

GenlCam® PoE cameras

COE-003-M-POE-020-IR-C	Area Scan camera RJ33B4AD0DT, CCD, Global shutter, 640 x 480, 0.3 MP, 7.4 pix, 1/3", Gray, 200 fps, GigE, POE, C - mount, Glass filter
COE-003-C-POE-020-IR-C	Area Scan camera RJ33B4AD0DT, CCD, Global shutter, 640 x 480, 0.3 MP, 7.4 pix, 1/3", Color, 200 fps, GigE, POE, C - mount, Infrared cut filter
COE-012-M-POE-020-IR-C	Area Scan camera RJ33J4CA3DE, CCD, Global shutter, 1280 x 960, 1.2 MP, 3.75 pix, 1/3", Gray, 30 fps, GigE, POE, C - mount, Glass filter



All product specifications and data are subject to change without notice to improve reliability, functionality, design or other. Photos and pictures are for illustration purposes only.

COE-012-C-POE-020-IR-C	Area Scan camera RJ33J4CA3DE, CCD, Global shutter, 1280 x 960, 1.2 MP, 3.75 pix, 1/3", Color, 30 fps, GigE, POE, C - mount, Infrared cut filter
COE-050-M-POE-023-IR-C	Area Scan camera MT9P031, CMOS, Rolling shutter, 2592 x 1944, 5 MP, 2.2 pix, 1/2.5", Gray, 14 fps, GigE, POE, C - mount, Glass filter
COE-106-M-POE-031-IR-C-2	Area Scan camera MT9J003, CMOS, Rolling shutter, 3840 x 2748, 10.6 MP, 1.67 pix, 1/2.3", Gray, 11 fps, GigE, POE, C - mount, Glass filter
COE-106-C-POE-031-IR-C	Area Scan camera MT9J003, CMOS, Global shutter, 3840 x 2748, 10.6 MP, 1.67 pix, 1/2.3", Color, 7 fps, GigE, POE, C - mount, Infrared cut filter



COE-U series

USB 3.0 GenICam® cameras

COE-016-M-USB-021-IR-C	Area Scan camera IMX273, CMOS, Global shutter, 1440 x 1080, 1.6 MP, 3.45 pix, 1/2.9", Gray, 165 fps, USB 3.0, C - mount, Glass filter
COE-016-C-USB-021-IR-C	Area Scan camera IMX273, CMOS, Global shutter, 1440 x 1080, 1.6 MP, 3.45 pix, 1/2.9", Color, 165 fps, USB 3.0, C - mount, Infrared cut filter
COE-050-C-USB-023-IR-C	Area Scan camera AR0521, CMOS, Rolling shutter, 2592 x 1944, 5 MP, 2.2 pix, 1/2.5", Color, 31 fps, USB 3.0, C - mount, Infrared cut filter



mvBlueFOX3-2 series

USB3 vision camera with Sony Pregius CMOS sensors

RT-mvBF3-2004	USB3 vision camera with Sony Pregius CMOS sensor IMX287
RT-mvBF3-2016	USB3 vision camera with Sony Pregius CMOS sensor IMX273



mvBlueCOUGAR series

GigE & Dual GigE Vision cameras

RT-mvBC-X100f	Camera with interface GigE (1GB/s), sensor size 1/2.9", mpixel 0.4, resolution 728 x 544, sensor name IMX287, sensor type CMOS
RT-mvBC-X102f	Camera with interface GigE (1GB/s), sensor size 1/2.9", mpixel 1.58, resolution 1456 x 1088, sensor name IMX273, sensor type CMOS
RT-mvBC-XD102f	Camera with interface Dual GigE (2GB/s), sensor size 1/2.9", mpixel 1.58, resolution 1456 x 1088, sensor name IMX273, sensor type CMOS
RT-mvBC-X105	Camera with interface GigE (1GB/s), sensor size 1/2.5", mpixel 5.04, resolution 2592 x 1944, sensor name MT9P031, sensor type CMOS
RT-mvBC-X1010	Camera with interface GigE (1GB/s), sensor size 1/2.3", mpixel 10.66, resolution 3856 x 2764, sensor name MT9J003, sensor type CMOS