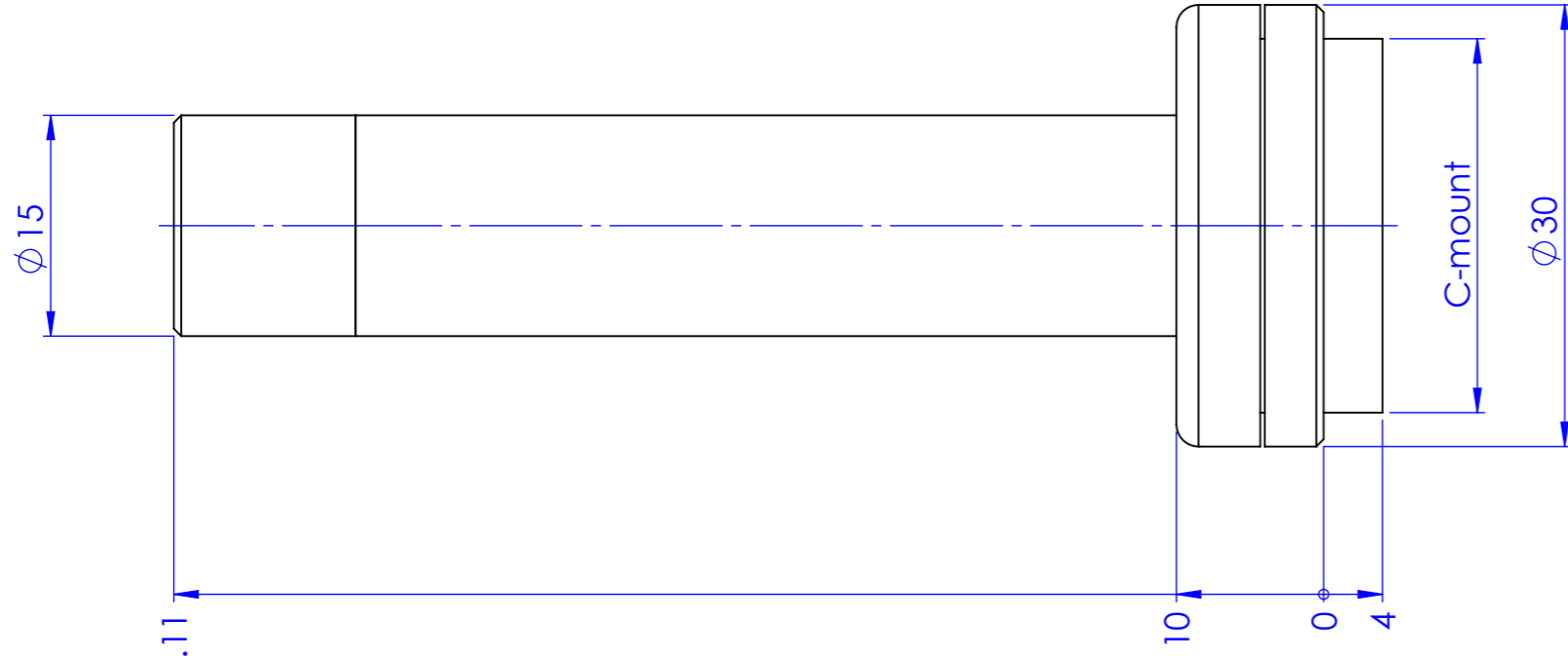
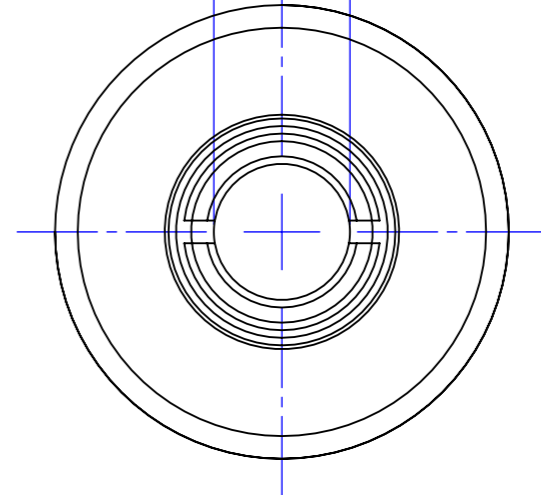


Ø15



Ø9
Clear
aperture



Material		N.A.		Mass		36 g		Scale		2:1	
Surface treatment				Part No.		CO50530					
Geometrical tolerance (ISO 2768-2)		Class		K		Undimensioned bevels		0.5x45°			
Linear tolerance (ISO 2768-2)		Class		m		Undimensioned radii		R 0.5			
0.5 ±3	>3÷ 6	>6÷ 30	>30÷ 120	>120 ±400	>400÷ 1000	>1000 ±2000	>2000 ±4000				
±0.1	±0.1	±0.2	±0.3	±0.5	±0.8	±1.2	±2				
 OPTO ENGINEERING S.r.l. - Mantova, Italy - Tel. +39 0376699111 - www.opto-e.com		Date		Name		Drawing No.		Sheet			
		Designed		15/04/2014		Santini		DP 50530-A		1/1	
		Drawn		09/12/2021		Rizzotto					
Checked		09/12/2021		Rizzotto		<i>Secret and confidential - All rights reserved - No copy, dissemination or circulation is allowed unless specifically authorized in writing by OPTO ENGINEERING S.r.l. - Any violation shall be legally prosecuted.</i>					

all dimensions are in mm

0 1 2 3 4 5 6 7 8 9 10