

LTCLHP192-W

Telecentric HP illuminator, beam diameter 250 mm, white

SPECIFICATIONS

Optical specifications

Beam diameter	(mm)	250
Working distance range	(mm)	350 - 700
Light color, peak wavelength (1)		white

Mechanical specifications

Length (2)	(mm)	608.2
Outer diameter	(mm)	260
Mass	(g)	9799

Electrical specifications

Device power ratings

DC voltage minimum (3)	(V)	12
DC voltage maximum (3)	(V)	24
Power consumption	(W)	< 2.5
Max LED forward current (4)	(mA)	350
Cables		CB244P1500 included

LED power ratings

Forward voltage (typical) (5)	(V)	2.78
Forward voltage (max) (5)	(V)	-
Max pulse current (6)	(mA)	2000

Eye safety

Risk group according to CEI EN 62471:2010	Risk group 1
---	--------------

Last update: 2021-06-22

NOTES

1. Opto Engineering® recommends green light for high precision measurement applications
2. Nominal value, with no spacers in place
3. Tolerance ± 10%
4. Used in continuous (not pulsed) mode
5. At max forward current. Tolerance is ±0.06V on forward voltage measurements
6. At pulse width ≤ 10 ms, duty cycle ≤ 10% condition. Built-in electronics board must be bypassed (see tech info)

COMPATIBLE PRODUCTS

Despite the efforts made to generate an error-free compatibility list, we always recommend to consult the Opto Engineering® technical support department before purchasing a compatible product. Opto Engineering® shall not be liable for any damage or malfunctioning caused by the incorrect selection of a compatible product.



TC3MHR-TC5MHR CORE PLUS series

Compact large-FOV telecentric lenses for sensors up to 4/3"

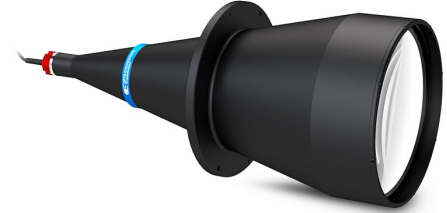
TCCP3MHR192-C Ultra compact bi-telecentric lens for matrix detectors up to 1.1", magnification 0.064x

TCCP5MHR192-F Ultra compact bi-telecentric lens for matrix detectors up to 4/3", magnification 0.088x

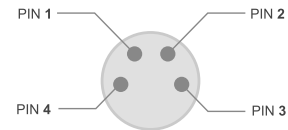


TC series

Bi-telecentric lenses for sensors up to 2/3"



CONNECTION



Device side - male pins

Front view

Pinout reference

Pin	Function
1	Earth
2	GND
3	LED Anode
4	Power supply (+12±24 V)



All product specifications and data are subject to change without notice to improve reliability, functionality, design or other. Photos and pictures are for illustration purposes only.

TC23172	Bi-telecentric lens for 2/3" detectors, magnification 0.051 x, C-mount
TC13192	Bi-telecentric lens for 1/3" detectors, magnification 0.025 x, C-mount
TC12192	Bi-telecentric lens for 1/2" detectors, magnification 0.033 x, C-mount
TC23192	Bi-telecentric lens for 2/3" detectors, magnification 0.046 x, C-mount



TC CORE PLUS series

Compact large-FOV bi-telecentric lenses for sensors up to 2/3"

TCCP12192	Ultra compact bi-telecentric lens for matrix detectors up to 1/1.8", magnification 0.033x
-----------	---



TC1MHR-TC4MHR series

Telecentric lenses for sensors up to 4/3"

TC1MHR192-C	High resolution telecentric lens for 1/1.2" detectors, magnification 0.056x, C-mount
TC2MHR192-C	High resolution telecentric lens for 1" detectors, magnification 0.067x, C-mount
TC2MHR192-F	High resolution telecentric lens for 1" detectors, magnification 0.067x, F-mount
TC2MHR192-E	High resolution telecentric lens for 1" detectors, magnification 0.067x, mount M42X1 FD=16
TC3MHR192-C	High resolution telecentric lens for 1.1" detectors, magnification 0.075x, C-mount
TC4MHR192-C	High resolution telecentric lens for 4/3" detectors, magnification 0.092x, C-mount
TC4MHR192-F	High resolution telecentric lens for 4/3" detectors, magnification 0.092x, F-mount
TC4MHR192-E	High resolution telecentric lens for 4/3" detectors, magnification 0.092x, mount M42X1 FD=16



TC16M series

Telecentric lenses for sensors up to 43.3 mm and 8k line scan cameras

TC16M192	Telecentric lens for 35 mm detectors, magnification 0.187x, F-mount
TC16M192-Q	Telecentric lens for 35 mm detectors, magnification 0.187x, M58x0.75 FD = 6.56



TC12K series

Telecentric lenses for sensors up to 62 mm and 12k line scan cameras

TC12K192	Telecentric lens for 12k and 16k line scan cameras, magnification 0.320 x, M72 x 0.75 mount
----------	---



TCDP series

Double port bi-telecentric lens for detector up to 2/3"

TCDP2X192	Double magnification bi-telecentric lens, for detectors up to 2/3"
TCDP4X192	Double magnification bi-telecentric lens, for detectors up to 2/3"



Accessories

Accessories and add-ons to make the most of Opto Engineering® lenses.

LED1W-W	Replacement LED source, white Diffuser cap for LTCLHP illuminators
---------	---



CMHO series

Clamping mechanics for lenses

CMHO192R	Clamping mechanics for TCxx192 lenses and LTCLHP192-X illuminators rotation type
----------	--



LTSCHP series

High-performance replacement LED modules

LTSCHP1W-W	Replacement LED module, white
------------	-------------------------------



PS series

Power supplies



CB series

Cables

[CB244P1500](#) Power cable, side 1 M8 connector straight, side 2 cable end - 2 m - type 1 labels

[CB244P1500L](#) Power cable, side 1 M8 connector angled, side 2 cable end - 2 m - type 1 labels



LTIC series

LED lighting controllers

[LTIC1CH-A1-4](#) Analogue lighting controller unit, 4A, 24V

[LTIC1CH-D1-4](#) Digital lighting controller unit, 4A, 24V

[LTICOBUL1000CH1-24VUSTB](#) 24VDC analog lighting controller 1 channel, UK power cord, Illumination cable, side A SM 3 way male connector, side B terminal blocks connector, 24V - 3m

[LTICOBUL1000CH1-24VEUTB](#) 24VDC analog lighting controller 1 channel, UK power cord, Illumination cable, side A SM 3 way male connector, side B terminal blocks connector, 24V - 3m

[LTICOBUL1000CH1-24VUKTB](#) 24VDC analog lighting controller 1 channel, UK power cord, Illumination cable, side A SM 3 way male connector, side B terminal blocks connector, 24V - 3m
