

LTCLCR120-W

Telecentric CORE illuminator, beam dimensions $\varnothing = 156$, $x = 130$, white

SPECIFICATIONS

Optical specifications

Minimum beam shape dimension (7)	(mm)	$\varnothing = 156$, $x = 130$
Working distance range	(mm)	220-440
Light color, peak wavelength (5)		white

Electrical specifications

Device power ratings

DC voltage minimum(1)	(V)	12
DC voltage maximum(1)	(V)	24
Power consumption	(W)	< 2.5
Max LED forward current (2)	(mA)	350

LED power ratings

Forward voltage (typical) (3)	(V)	2.78
Forward voltage (max) (3)	(V)	-
Max pulse current (4)	(mA)	2000

Mechanical specifications

A	(mm)	182
B	(mm)	220
C (6)	(mm)	231
Mass	(g)	9060

Eye safety

Risk group according to CEI EN 62471:2010	Risk group 1
---	--------------

Last update: 2021-06-22

NOTES

1. Tolerance $\pm 10\%$
2. Used in continuous (not pulsed) mode.
3. At max forward current. Tolerance is $\pm 0.06V$ on forward voltage measurements.
4. At pulse width ≤ 10 ms, duty cycle $\leq 10\%$ condition. Built-in electronics board must be bypassed (see tech info).
5. Opto Engineering® recommends green light for high precision measurement applications.
6. Nominal value, with no spacers in place.
7. Beam shape is not circular. See [Tech Info](#) for minimum beam dimensions.

COMPATIBLE PRODUCTS

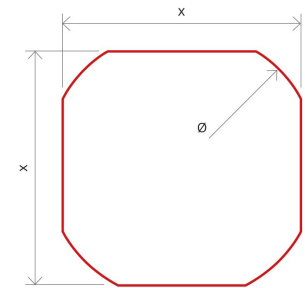
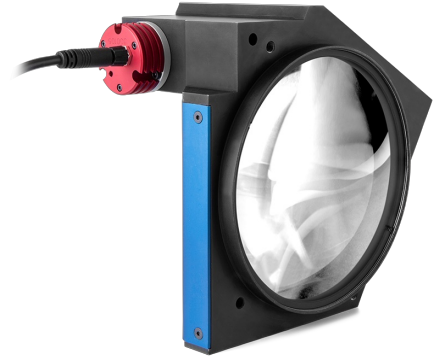
Despite the efforts made to generate an error-free compatibility list, we always recommend to consult the Opto Engineering® technical support department before purchasing a compatible product. Opto Engineering® shall not be liable for any damage or malfunctioning caused by the incorrect selection of a compatible product.



Bi-telecentric lenses for sensors up to 2/3"

TC12120	Bi-telecentric lens for 1/2" detectors, magnification 0.052 x, C-mount
TC13120	Bi-telecentric lens for 1/3" detectors, magnification 0.038 x, C-mount
TC23120	Bi-telecentric lens for 2/3" detectors, magnification 0.072 x, C-mount

TC CORE series



Minimum beam shape dimensions (\varnothing, x)

All product specifications and data are subject to change without notice to improve reliability, functionality, design or other. Photos and pictures are for illustration purposes only.



Compact bi-telecentric lenses for sensors up to 2/3"

TCCR12120 Bi-telecentric CORE lens for 1/2" detectors, magnification 0.052 x, C-mount

TCCR23120 Bi-telecentric CORE lens for 2/3" detectors, magnification 0.072 x, C-mount



TC1MHR-TC4MHR CORE series

Compact telecentric lenses for sensors up to 4/3"

TCCR1M120-C Telecentric CORE lens for 1/1.2" detectors, magnification 0.087 x, mount C, WD=334.6

TCCR2M120-C Telecentric CORE lens for 1" detectors, magnification 0.104 x, C

TCCR2M120-E Telecentric CORE lens for 1" detectors, magnification 0.104 x, M42x1 FD 16

TCCR2M120-F Telecentric CORE lens for 1" detectors, magnification 0.104 x, F

TCCR3M120-C Telecentric CORE lens for 1.1" detectors, magnification 0.118 x, mount C, WD=334.6

TCCR4M120-C Telecentric CORE lens for 4/3" detectors, magnification 0.143 x, C

TCCR4M120-F Telecentric CORE lens for 4/3" detectors, magnification 0.143 x, F

TCCR4M120-E Telecentric CORE lens for 4/3" detectors, magnification 0.143 x, M42x1 FD 16



TC1MHR-TC4MHR series

Telecentric lenses for sensors up to 4/3"

TC1MHR120-C High resolution telecentric lens for 1/1.2" detectors, magnification 0.087x, C-mount

TC2MHR120-C High resolution telecentric lens for 1" detectors, magnification 0.104x, C-mount

TC2MHR120-F High resolution telecentric lens for 1" detectors, magnification 0.104x, F-mount

TC2MHR120-E High resolution telecentric lens for 1" detectors, magnification 0.104x, mount M42X1 FD=16

TC3MHR120-C High resolution telecentric lens for 1.1" detectors, magnification 0.118x, C-mount

TC4MHR120-C High resolution telecentric lens for 4/3" detectors, magnification 0.143x, C-mount

TC4MHR120-F High resolution telecentric lens for 4/3" detectors, magnification 0.143x, F-mount

TC4MHR120-E High resolution telecentric lens for 4/3" detectors, magnification 0.143x, mount M42X1 FD=16



TC12M series

Telecentric lenses for sensors up to APS-H and 4k line scan cameras

TC12M120-F High resolution telecentric lenses, magnification 0.233, WD 303.9, F mount

TC12M120-J High resolution telecentric lenses, magnification 0.233, WD 303.10, M42x1 FD12



LTSCHP series

High-performance replacement LED modules

LTSCHP1W-W Replacement LED module, white



CMHOCR series

Clamping mechanics for CORE lenses

CMHOCR120 Clamping mechanics for CORE telecentric lenses and illuminators TCCRxx120 and LTCLCR120-x



PS series

Power supplies

RT-SDR-120-24 24VDC DIN rail power supply



CB series

Cables

CB244P1500 Power cable, side 1 M8 connector straight, side 2 cable end - 2 m - type 1 labels

CB244P1500L Power cable, side 1 M8 connector angled, side 2 cable end - 2 m - type 1 labels

LTIC series

LED lighting controllers



LTIC1CH-A1-4	Analogue lighting controller unit, 4A, 24V
LTIC1CH-D1-4	Digital lighting controller unit, 4A, 24V
LTICOBUL1000CH1-24VUSTB	24VDC analog lighting controller 1 channel, UK power cord, Illumination cable, side A SM 3 way male connector, side B terminal blocks connector, 24V - 3m
LTICOBUL1000CH1-24VEUTB	24VDC analog lighting controller 1 channel, UK power cord, Illumination cable, side A SM 3 way male connector, side B terminal blocks connector, 24V - 3m
LTICOBUL1000CH1-24VUKTB	24VDC analog lighting controller 1 channel, UK power cord, Illumination cable, side A SM 3 way male connector, side B terminal blocks connector, 24V - 3m
