

LTCLCR064-W

Telecentric CORE illuminator, beam dimensions $\varnothing = 86$; $x = 67$, white

SPECIFICATIONS

Optical specifications

Minimum beam shape dimension (7)	(mm)	$\varnothing = 86$; $x = 67$
Working distance range	(mm)	120 - 240
Light color, peak wavelength (5)		white

Electrical specifications

Device power ratings

DC voltage minimum(1)	(V)	12
DC voltage maximum(1)	(V)	24
Power consumption	(W)	< 2.5
Max LED forward current (2)	(mA)	350

LED power ratings

Forward voltage (typical) (3)	(V)	2.78
Forward voltage (max) (3)	(V)	n.a.
Max pulse current (4)	(mA)	2000

Mechanical specifications

A	(mm)	101
B	(mm)	122
C (6)	(mm)	179
Mass	(g)	1832

Eye safety

Risk group according to CEI EN 62471:2010	Risk group 1
---	--------------

Last update: 2021-06-22

NOTES

1. Tolerance $\pm 10\%$
2. Used in continuous (not pulsed) mode.
3. At max forward current. Tolerance is $\pm 0.06V$ on forward voltage measurements.
4. At pulse width ≤ 10 ms, duty cycle $\leq 10\%$ condition. Built-in electronics board must be bypassed (see tech info).
5. Opto Engineering® recommends green light for high precision measurement applications.
6. Nominal value, with no spacers in place.
7. Beam shape is not circular. See [Tech Info](#) for minimum beam dimensions.

COMPATIBLE PRODUCTS

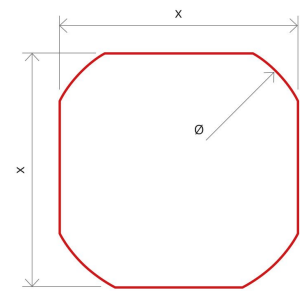
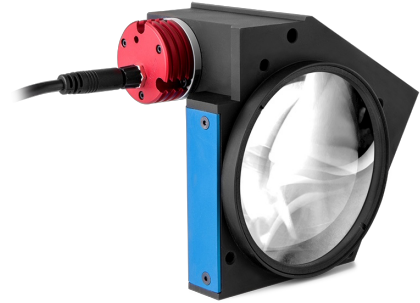
Despite the efforts made to generate an error-free compatibility list, we always recommend to consult the Opto Engineering® technical support department before purchasing a compatible product. Opto Engineering® shall not be liable for any damage or malfunctioning caused by the incorrect selection of a compatible product.



Bi-telecentric lenses for sensors up to 2/3"

TC13064	Bi-telecentric lens for 1/3" detectors, magnification 0.074 x, C-mount
TC12064	Bi-telecentric lens for 1/2" detectors, magnification 0.100 x, C-mount
TC23064	Bi-telecentric lens for 2/3" detectors, magnification 0.138 x, C-mount

TC CORE series



Minimum beam shape dimensions (\varnothing, x)

All product specifications and data are subject to change without notice to improve reliability, functionality, design or other. Photos and pictures are for illustration purposes only.



Compact bi-telecentric lenses for sensors up to 2/3"

[TCCR12064](#) Bi-telecentric CORE lens for 1/2" detectors, magnification 0.100 x, C-mount

[TCCR23064](#) Bi-telecentric CORE lens for 2/3" detectors, magnification 0.138 x, C-mount



TCSM series

3D bi-telecentric lenses with Scheimpflug adjustment

[TCSM064](#) 3D bi-telecentric lens with Scheimpflug adjustment



TC1MHR-TC4MHR CORE series

Compact telecentric lenses for sensors up to 4/3"

[TCCR1M056-C](#) Telecentric CORE lens for 1/1.2" detectors, magnification 0.190 x, mount C, WD=157.8

[TCCR1M064-C](#) Telecentric CORE lens for 1/1.2" detectors, magnification 0.166 x, mount C, WD=181.9

[TCCR2M056-C](#) Telecentric CORE lens for 1" detectors, magnification 0.228 x, C-mount

[TCCR2M056-E](#) Telecentric CORE lens for 1" detectors, magnification 0.228 x, M42x1 FD=16

[TCCR2M064-C](#) Telecentric CORE lens for 1" detectors, magnification 0.200 x, C-mount

[TCCR2M064-E](#) Telecentric CORE lens for 1" detectors, magnification 0.200 x, M42x1 FD=16

[TCCR3M056-C](#) Telecentric CORE lens for 1.1" detectors, magnification 0.259 x, mount C, WD=157.8

[TCCR4M056-C](#) Telecentric CORE lens for 4/3" detectors, magnification 0.314 x, C-mount

[TCCR4M056-F](#) Telecentric CORE lens for 4/3" detectors, magnification 0.314 x, F-mount

[TCCR4M056-E](#) Telecentric CORE lens for 4/3" detectors, magnification 0.314 x, M42x1 FD=16

[TCCR4M064-C](#) Telecentric CORE lens for 4/3" detectors, magnification 0.275 x, C-mount

[TCCR4M064-F](#) Telecentric CORE lens for 4/3" detectors, magnification 0.275 x, F-mount

[TCCR4M064-E](#) Telecentric CORE lens for 4/3" detectors, magnification 0.275 x, M42x1 FD=16



TC1MHR-TC4MHR series

Telecentric lenses for sensors up to 4/3"

[TC1MHR056-C](#) High resolution telecentric lens for 1/1.2" detectors, magnification 0.190x, C-mount

[TC2MHR056-C](#) High resolution telecentric lens for 1" detectors, magnification 0.228x, C-mount

[TC2MHR056-F](#) High resolution telecentric lens for 1" detectors, magnification 0.228x, F-mount

[TC2MHR056-E](#) High resolution telecentric lens for 1" detectors, magnification 0.228x, mount M42X1 FD=16

[TC2MHR064-C](#) High resolution telecentric lens for 1" detectors, magnification 0.200x, C-mount

[TC2MHR064-F](#) High resolution telecentric lens for 1" detectors, magnification 0.200x, F-mount

[TC2MHR064-E](#) High resolution telecentric lens for 1" detectors, magnification 0.200x, mount M42X1 FD=16

[TC3MHR056-C](#) High resolution telecentric lens for 1.1" detectors, magnification 0.259x, C-mount

[TC4MHR056-C](#) High resolution telecentric lens for 4/3" detectors, magnification 0.314x, C-mount

[TC4MHR056-F](#) High resolution telecentric lens for 4/3" detectors, magnification 0.314x, F-mount

[TC4MHR056-E](#) High resolution telecentric lens for 4/3" detectors, magnification 0.314x, mount M42X1 FD=16

[TC4MHR064-C](#) High resolution telecentric lens for 4/3" detectors, magnification 0.275x, C-mount

[TC4MHR064-F](#) High resolution telecentric lens for 4/3" detectors, magnification 0.275x, F-mount

[TC4MHR064-E](#) High resolution telecentric lens for 4/3" detectors, magnification 0.275x, mount M42X1 FD=16



TC16M series

Telecentric lenses for sensors up to 43.3 mm and 8k line scan cameras

[TC16M064](#) Telecentric lens for 35 mm detectors, magnification 0.561 x, F-mount

[TC16M064-Q](#) Telecentric lens for 35 mm detectors, magnification 0.561 x, mount M58x0.75 FD = 6.56



TC12K series

Telecentric lenses for sensors up to 62 mm and 12k line scan cameras

[TC12K064](#) Telecentric lens for 12k and 16k line scan cameras, magnification 0.960 x, M72 x 0.75 mount



TC12M series

Telecentric lenses for sensors up to APS-H and 4k line scan cameras

TC12M064-F	High resolution telecentric lenses, magnification 0.465, WD 157.6, F mount
TC12M064-J	High resolution telecentric lenses, magnification 0.465, WD 157.7, M42x1 FD12



LTSCHP series

High-performance replacement LED modules

LTSCHP1W-W	Replacement LED module, white
----------------------------	-------------------------------



LTDV series

LED lighting strobe controllers

LTDV1CH-17V	Strobe controller 1 channel variable current 5 mA - 17A
-----------------------------	---



CMHOCR series

Clamping mechanics for CORE lenses

CMHOCR064	Clamping mechanics for CORE telecentric lenses and illuminators TCCRxx64 and LTCLCR064-x
---------------------------	--



PS series

Power supplies

RT-SDR-120-24	24VDC DIN rail power supply
-------------------------------	-----------------------------



CMPTCR series

Mounting plates for CORE optical benches

CMPTCR064	Mechanical components designed for CORE telecentric lenses and illuminators Ø 64mm
---------------------------	--



CB series

Cables

CB244P1500	Power cable, side 1 M8 connector straight, side 2 cable end - 2 m - type 1 labels
CB244P1500L	Power cable, side 1 M8 connector angled, side 2 cable end - 2 m - type 1 labels



CMT series

Precision alignment mechanics for lenses

CMTHCR064	Precision alignment mechanics for CORE telecentric optics 064
---------------------------	---



LTIC series

LED lighting controllers

LTIC1CH-A1-4	Analogue lighting controller unit, 4A, 24V
LTIC1CH-D1-4	Digital lighting controller unit, 4A, 24V
LTICOBUL1000CH1-24VUSTB	24VDC analog lighting controller 1 channel, UK power cord, Illumination cable, side A 5M 3 way male connector, side B terminal blocks connector, 24V - 3m
LTICOBUL1000CH1-24VEUTB	24VDC analog lighting controller 1 channel, UK power cord, Illumination cable, side A 5M 3 way male connector, side B terminal blocks connector, 24V - 3m
LTICOBUL1000CH1-24VUKTB	24VDC analog lighting controller 1 channel, UK power cord, Illumination cable, side A 5M 3 way male connector, side B terminal blocks connector, 24V - 3m