

1 2 3 4 5 6 7 8

D

C

B

A

D

C

B

A

17.52
Optical flange
distance

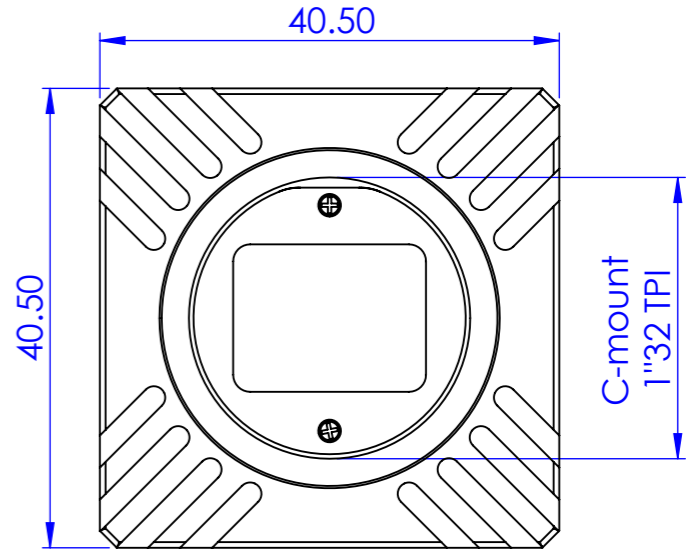
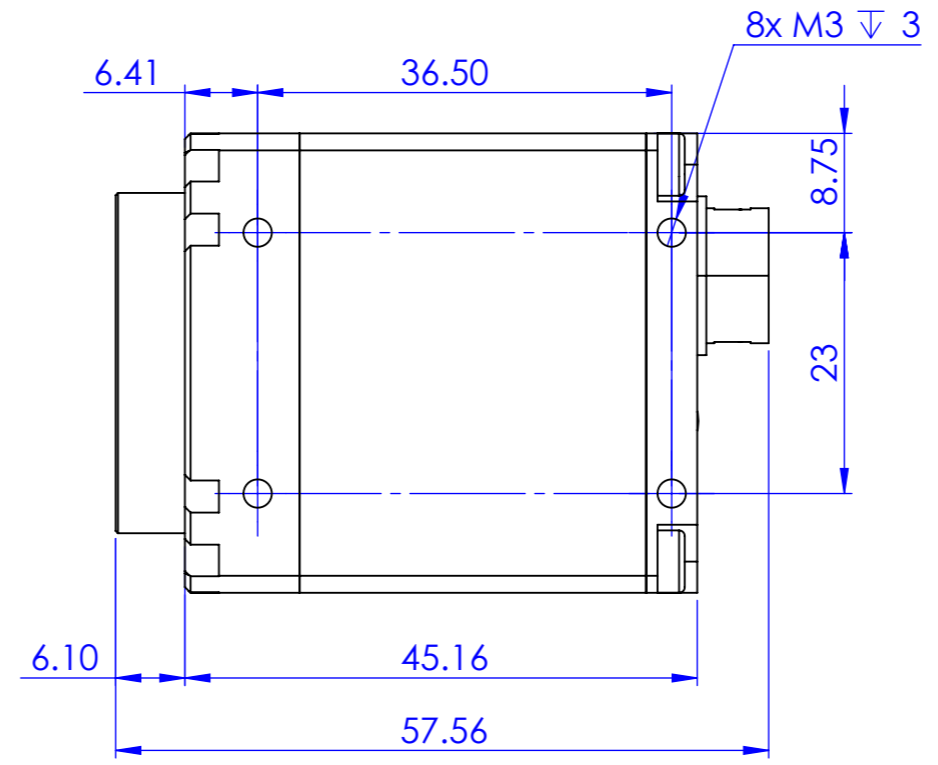
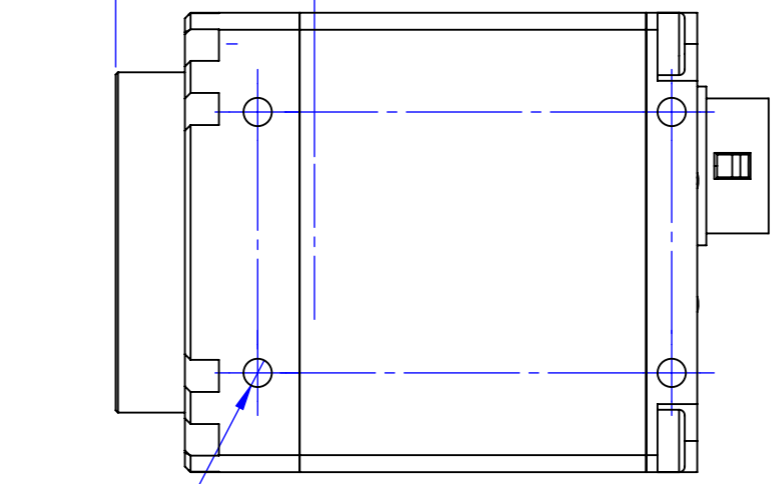
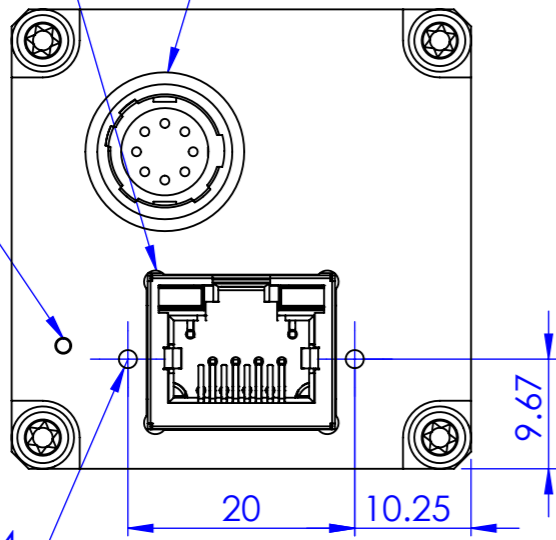
8x M3

Ethernet interface
M2 screw holes
for network cable
securing

Circular connector
power and I/O interface

Status indicator
LED

2x M2



Material		N.A.		Surface treatment		N.A.		Mass		150 g	Scale		3:2
Geometrical tolerance (ISO 2768-2)		Class		K		Undimensioned bevels		0.5x45°		Description			
Linear tolerance (ISO 2768-2)		Class		m		Undimensioned radii		R 0.5		ITALA G/G.EL C-Mount			
0.5 ±3	>3± 6	>6± 30	>30± 120	>120 ±400	>400± 1000	>1000 ±2000	>2000 ±4000	Drawing No.		DP 31148-A			Sheet
±0.1	±0.1	±0.2	±0.3	±0.5	±0.8	±1.2	±2	Date		Name		1/1	
		Designed		11/06/2020		Ccharly		Date		Name		Sheet	
		Drawn		03/11/2022		Rodella		Date		Name		1/1	
		Checked		03/11/2022		Rodella		Date		Name		1/1	
OPTO ENGINEERING S.r.l. - Mantova, Italy - Tel. +39 0376699111 - www.opto-e.com												Secret and confidential - All rights reserved - No copy, dissemination or circulation is allowed unless specifically authorized in writing by OPTO ENGINEERING S.r.l. - Any violation shall be legally prosecuted.	

1 2 3 0 1 2 3 4 5 6 7 8 9 10 6 7 8