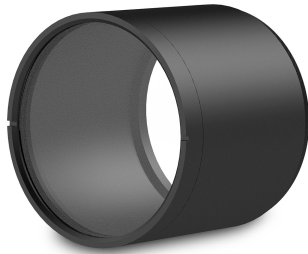


IPT-D81L72 | DATASHEET

IP67 lens tube 81 mm inner diameter, 72 mm length for ITALA G.IP cameras



IPT series. Dustproof water resistant tubes for lenses



SPECIFICATIONS

Mechanical specifications

Type	Tube with window	
Inner Diameter	(mm)	81.0
Inner Length	(mm)	72.0
Outer Diameter	(mm)	92.0
Outer Length	(mm)	76.1
Mass	(g)	216

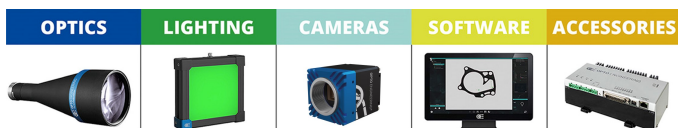
RECOMMENDED ACCESSORIES



Opto-Engineering® offers sealed lens tubes of different diameters to be used with varying lens sizes (IPT-Series) and sealed M12 cables (CB series) to complete your vision system.

COMPATIBLE PRODUCTS

Full list of compatible products available [here](#).



A wide selection of innovative machine vision components.

All product specifications and data are subject to change without notice to improve reliability, functionality, design or other. Photos and pictures are for illustration purposes only. Data are reported by design, actual lens performance may vary due to manufacturing tolerances.