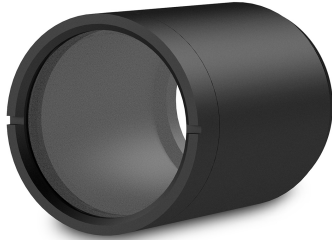


IPT-D41L65 | DATASHEET

IP67 lens tube 41 mm inner diameter, 65 mm length for ITALA G.IP cameras



IPT series. Dustproof water resistant tubes for lenses



SPECIFICATIONS

Mechanical specifications

| Type | Tube with window | |
|----------------|------------------|------|
| Inner Diameter | (mm) | 41.0 |
| Inner Length | (mm) | 65.0 |
| Outer Diameter | (mm) | 52.0 |
| Outer Length | (mm) | 69.1 |
| Mass | (g) | 100 |

RECOMMENDED ACCESSORIES



Opto-Engineering® offers sealed lens tubes of different diameters to be used with varying lens sizes (IPT-Series) and sealed M12 cables (CB series) to complete your vision system.

COMPATIBLE PRODUCTS

Full list of compatible products available [here](#).



A wide selection of innovative machine vision components.