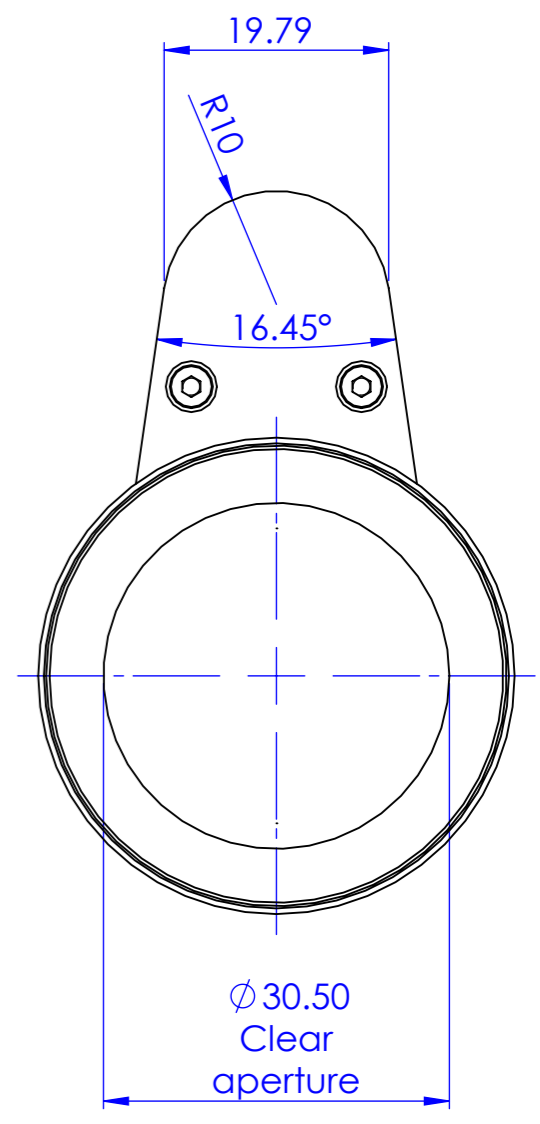
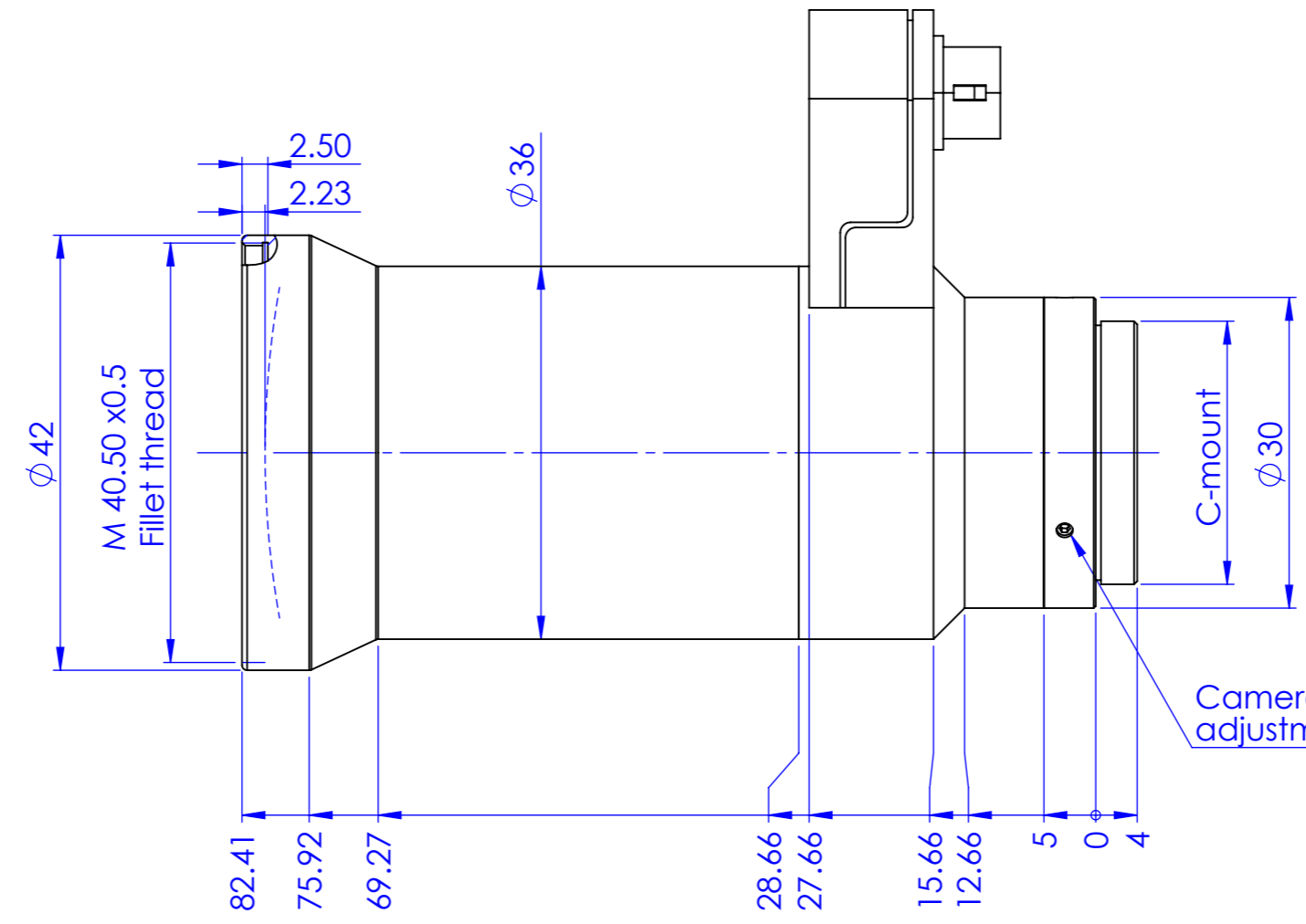
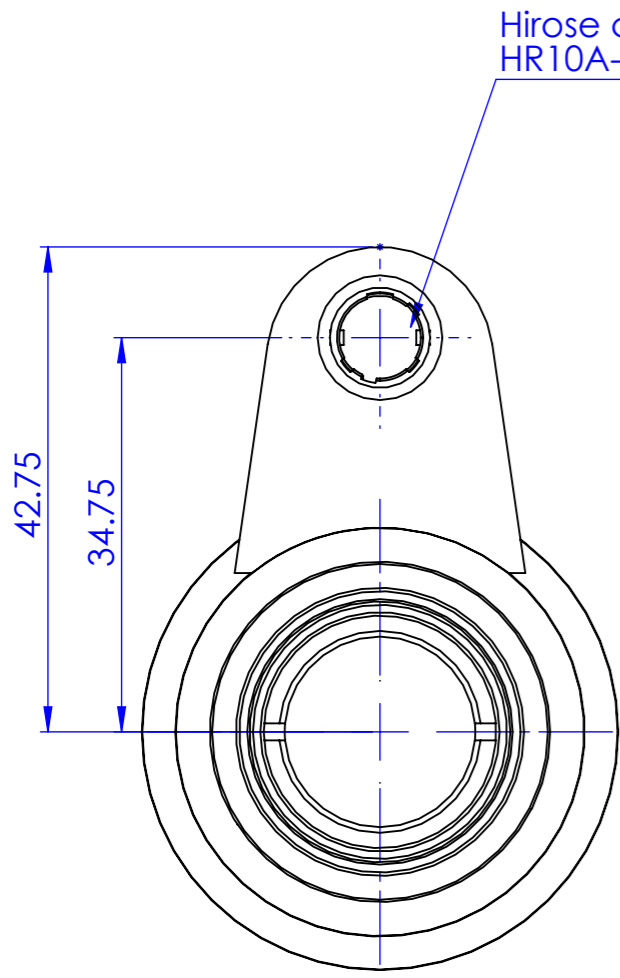


1 2 3 4 5 6 7 8

D  
C  
B  
A

D  
C  
B  
A



Material		N.A.		Surface treatment		N.A.		Mass		161 g		Scale		1.5:1	
Geometrical tolerance (ISO 2768-2)								Class		K		Undimensioned bevels		0.5x45°	
Linear tolerance (ISO 2768-2)								Class		m		Undimensioned radii		R 0.5	
0.5 ±3		>3± 6		>6± 30		>30± 120		>120 ±400		>400± 1000		>1000 ±2000		>2000 ±4000	
±0.1		±0.1		±0.2		±0.3		±0.5		±0.8		±1.2		±2	
<p>OPTO ENGINEERING</p>				Date		Name		Drawing No.		Sheet					
				Designed		23/02/2023		LSpanu		DP 33468-C		1/1			
				Drawn		23/11/2023		Rodella							
Checked		27/11/2023		LSpanu		Secret and confidential - All rights reserved - No copy, dissemination or circulation is allowed unless specifically authorized in writing by OPTO ENGINEERING S.p.A. - Any violation shall be legally prosecuted.									
OPTO ENGINEERING S.p.A. - Mantova, Italy - Tel. +39 0376699111 - www.opto-e.com															

1 2 3 0 1 2 3 4 5 6 7 8 9 10 6 7 8