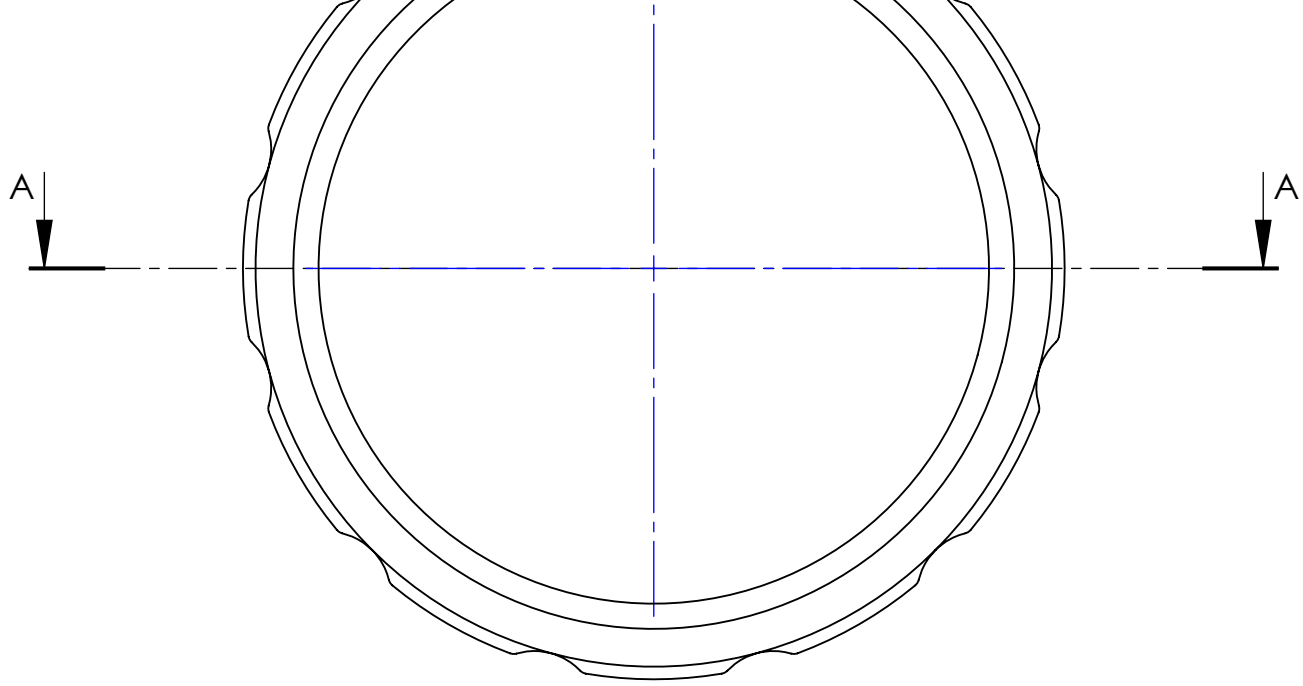
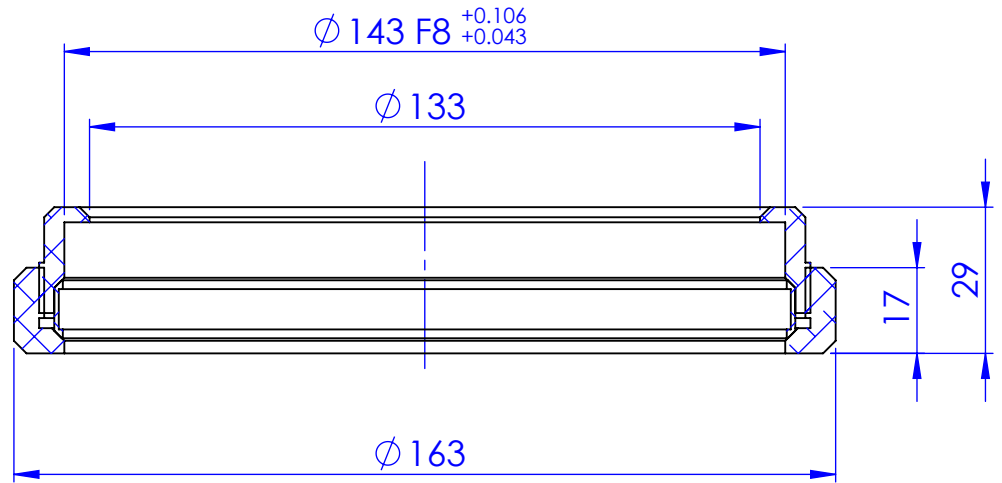


1 2 3 4



SEZIONE A-A



Material		N.A.			Mass	255 g	Scale	1:1.5
Surface treatment		N.A.			Part No.	CO22425		
Geometrical tolerance (ISO 2768-2)		Class	K	Undimensioned bevels	Description <b>CMWF096</b>			
Linear tolerance (ISO 2768-2)		Class	m	Undimensioned radii				
0.5 ±3	>3± 6	>6± 30	>30± 120	>120 ±400	>400± 1000	>1000 ±2000	>2000 ±4000	R 0.5
±0.1	±0.1	±0.2	±0.3	±0.5	±0.8	±1.2	±2	
all dimensions are in mm			Date		Name		Drawing No.	
			Designed	27/03/2014	Santini		<b>DP 22425-A</b>	
			Drawn	09/04/2014	LSantini			
			Checked	30/11/2021	Rodella			
Sheet 1/1								
OPTO ENGINEERING S.r.l. - Mantova, Italy - Tel. +39 0376699111 - www.opto-e.com								
Secret and confidential - All rights reserved - No copy, dissemination or circulation is allowed unless specifically authorized in writing by OPTO ENGINEERING S.r.l. - Any violation shall be legally prosecuted.								

1 2 3 4