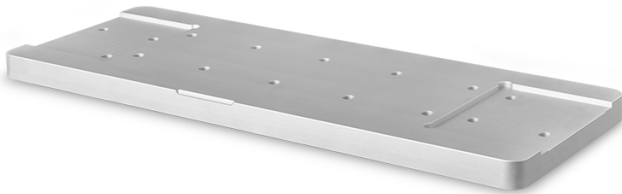




CMPTCR048 | DATASHEET

Mounting plate for TCCRxx048, TCCRxM048-x, LTCLCR048-x



CMPTCR series are mechanical components designed for CORE Series telecentric lenses and illuminators. The specific design allows the user to precisely mount CORE series telecentric lenses and illuminators directly onto the plates without mounting clamps.



SPECIFICATIONS

Mechanical specifications

Length	(mm)	351.4
Width	(mm)	130.0
Height	(mm)	15.0
Mass	(g)	1722

COMPATIBILITY

This products is compatible with:

- TCCRxx048
- TCCRxM048-x
- LTCLCR048-x

COMPATIBLE PRODUCTS

Full list of compatible products available [here](#).



A wide selection of innovative machine vision components.

All product specifications and data are subject to change without notice to improve reliability, functionality, design or other. Photos and pictures are for illustration purposes only. Data are reported by design, actual lens performance may vary due to manufacturing tolerances.