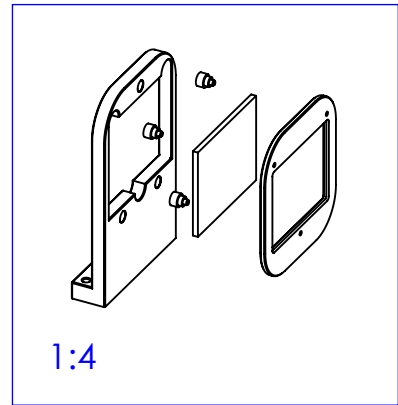
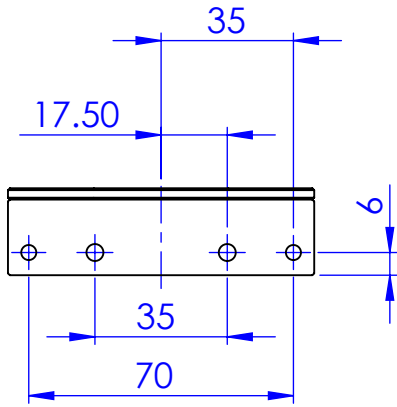
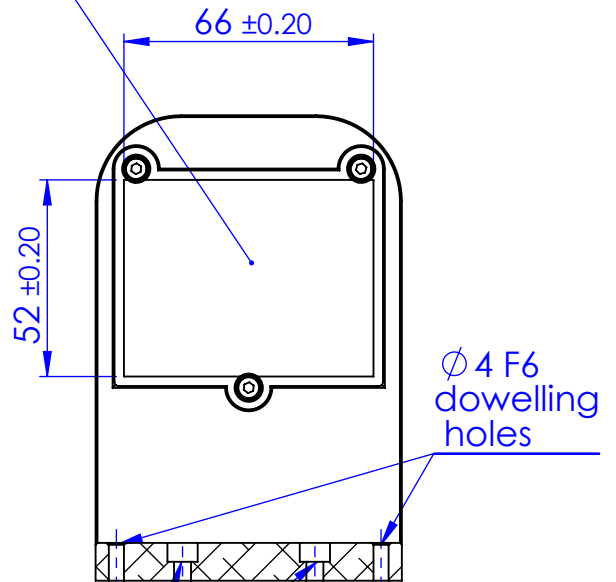
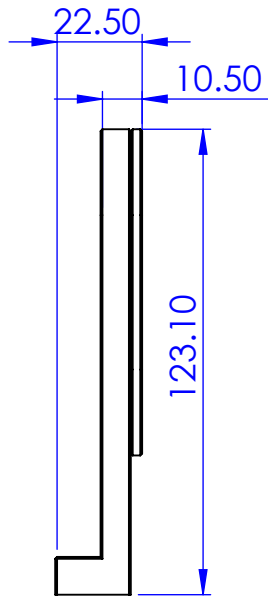
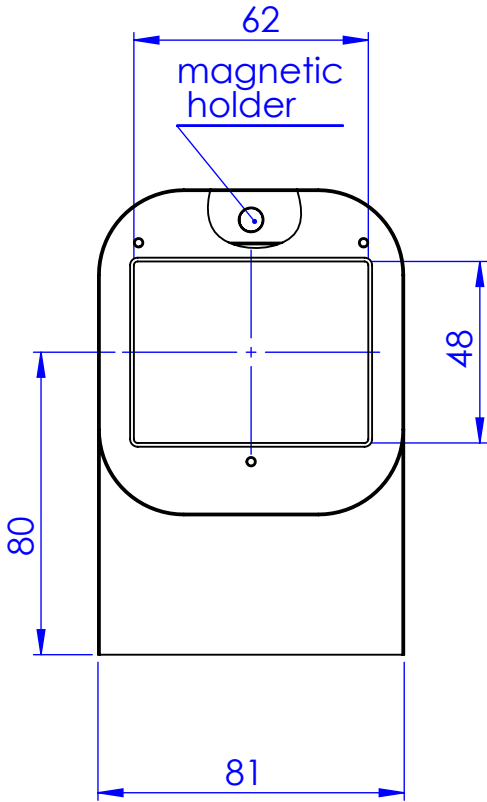


PATTERN NOT INCLUDED



removable
chrome on glass
pattern



counterbored holes
for M4 screws

| | | | | | | | | | |
|---|------------------------------------|----------|-----------|-------------|--------------|----------------------|----------------|----------------|-------------|
| Material | | N.A. | | | | Mass | 227 g | Scale | 1:2 |
| Surface treatment | | N.A. | | | | Part No. | CO18948 | | |
| all dimensions are in mm | Geometrical tolerance (ISO 2768-2) | | | Class | K | Undimensioned bevels | 0.5x45° | Description | |
| | Linear tolerance (ISO 2768-2) | | | Class | m | | | | |
| | 0.5 ±3 | >3÷ 6 | >6÷ 30 | >30÷ 120 | >120 ±400 | >400÷ 1000 | >1000 ±2000 | >2000 ±4000 | CMPH036-056 |
| ±0.1 | ±0.1 | ±0.2 | ±0.3 | ±0.5 | ±0.8 | ±1.2 | ±2 | | |
| | | | | Date | Name | Drawing No. | | Sheet | |
| | | Designed | | | | DP18948-B | | 1/1 | |
| | | Drawn | | | | | | | |
| Checked | | | | | | | | | |
| OPTO ENGINEERING S.r.l. - Mantova, Italy - Tel. +39 0376699111 - www.opto-e.com | | | | | | | | | |

Secret and confidential - All rights reserved -
No copy, dissemination or circulation is allowed unless
specifically authorized in writing by OPTO ENGINEERING
S.r.l. - Any violation shall be legally prosecuted.