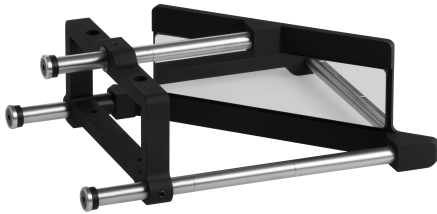




CMMR4K120-L | DATASHEET

45° first surface mirror for 144.0 x 38.5 mm clamping diameter optics, right angle lateral bend



SPECIFICATIONS

Optical specifications

Coating	Aluminium reflective coating, R>90%, bandwidth 430-670 nm	
Deviation angle	(°)	90

Mechanical specifications

Clamping size	(mm)	144.0 x 38.5
Clamping system	mounting screws	
Working distance difference ¹	(mm)	155.3
Length	(mm)	242.0
Width	(mm)	187.6
Height	(mm)	72.0
Mass	(g)	658

Protective windows² N.A.

¹ Value to be subtracted from the objective or illuminator working distance when the CMBS is used

² To be ordered separately

KEY ADVANTAGES

Reflect light at 90°.

Ideal for **limited space**.

Easy and secure clamping system.

Compatible with telecentric lenses and illuminators.

Optional **protective windows** available.

CMMR series is the Opto Engineering® answer to tight space integration issues, opening new installation options for your application.

COMPATIBILITY

This products is compatible with the following lenses:

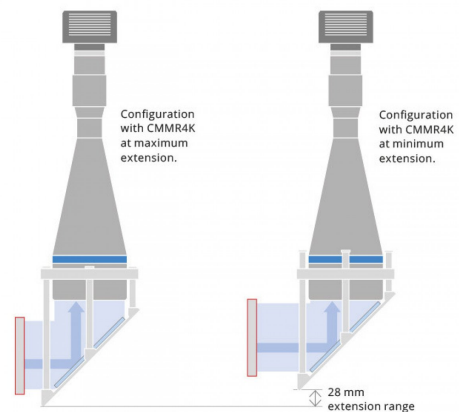
- TC4K120-x

This products is compatible with the following illuminators:

- LTCL4K120-x

CMMR SETUP

CMMR4K-L bends the light rays laterally.
LEFT BEND



COMPATIBLE PRODUCTS

Full list of compatible products available [here](#).



A wide selection of innovative machine vision components.

All product specifications and data are subject to change without notice to improve reliability, functionality, design or other. Photos and pictures are for illustration purposes only. Data are reported by design, actual lens performance may vary due to manufacturing tolerances.