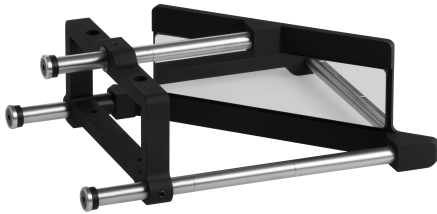


CMMR4K060-L | DATASHEET

45° first surface mirror for 83.0 x 38.5 mm clamping diameter optics, right angle lateral bend



SPECIFICATIONS

Optical specifications

Coating	Aluminium reflective coating, R>90%, bandwidth 430-670 nm	
Deviation angle	(°)	90

Mechanical specifications

Clamping size	(mm)	83.0 x 38.5
Clamping system	mounting screws	
Working distance difference ¹	(mm)	94.6
Length	(mm)	208.5
Width	(mm)	118.4
Height	(mm)	72.0
Mass	(g)	518

Protective windows² N.A.

¹ Value to be subtracted from the objective or illuminator working distance when the CMBS is used

² To be ordered separately

KEY ADVANTAGES

Reflect light at 90°.

Ideal for **limited space**.

Easy and secure clamping system.

Compatible with telecentric lenses and illuminators.

Optional **protective windows** available.

CMMR series is the Opto Engineering® answer to tight space integration issues, opening new installation options for your application.

COMPATIBILITY

This products is compatible with the following lenses:

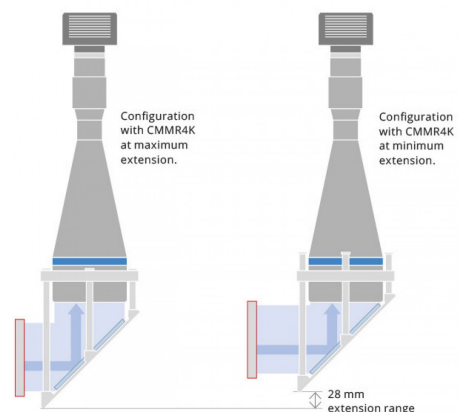
- TC4K060-x

This products is compatible with the following illuminators:

- LTCL4K060-x

CMMR SETUP

CMMR4K-L bends the light rays laterally.
LEFT BEND



COMPATIBLE PRODUCTS

Full list of compatible products available [here](#).



A wide selection of innovative machine vision components.