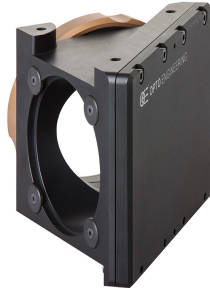


# CMMR056 | DATASHEET

## 45° first surface mirror for 80.0 mm clamping diameter optics



### SPECIFICATIONS

#### Optical specifications

Coating	Aluminium reflective coating, R>90%, bandwidth 430-670 nm	
Deviation angle	(°)	90

#### Mechanical specifications

Clamping size	(mm)	80.0
Clamping system	lockring	
Working distance difference <sup>1</sup>	(mm)	108.3
Length	(mm)	133.3
Width	(mm)	108.0
Height	(mm)	110.3
Mass	(g)	990
Protective windows <sup>2</sup>	WI056	

<sup>1</sup> Value to be subtracted from the objective or illuminator working distance when the CMBS is used

<sup>2</sup> To be ordered separately

### KEY ADVANTAGES

Reflect light at 90°.

Ideal for **limited space**.

**Easy and secure clamping system**.

**Compatible** with telecentric lenses and illuminators.

Optional **protective windows** available.

**CMMR series** is the Opto Engineering® answer to tight space integration issues, opening new installation options for your application.

### COMPATIBILITY

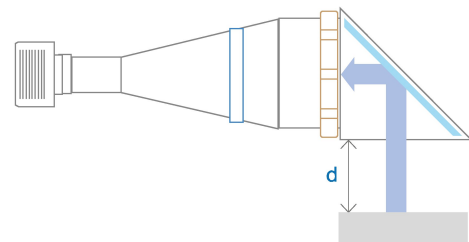
This products is compatible with the following lenses:

- TCxx056
- TCxMHR056-x
- TC1xM056-x

This products is compatible with the following illuminators:

- LTCLHP056-x

### CMMR SETUP



### COMPATIBLE PRODUCTS

Full list of compatible products available [here](#).



A wide selection of innovative machine vision components.