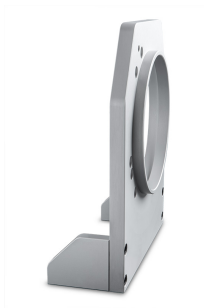


# CMHOCR096 | DATASHEET

## Clamping mechanics for TCCRxx096, TCCRxM096-x, LTCLCR096-x



**CMHOCR series** are special mounting clamps for CORE telecentric lenses and illuminators. CMHOCR mounting clamps have been designed to give even more flexibility for integration of CORE lenses and illuminators.



### SPECIFICATIONS

#### Mechanical specifications

Length	(mm)	200.0
Width	(mm)	240.0
Height	(mm)	84.0
Optical axis height	(mm)	140.0
Mass	(g)	1324

### COMPATIBILITY

This products is compatible with:

- TCCRxx096
- TCCRxM096-x
- LTCLCR096-x

### COMPATIBLE PRODUCTS

Full list of compatible products available [here](#).



A wide selection of innovative machine vision components.

All product specifications and data are subject to change without notice to improve reliability, functionality, design or other. Photos and pictures are for illustration purposes only. Data are reported by design, actual lens performance may vary due to manufacturing tolerances.