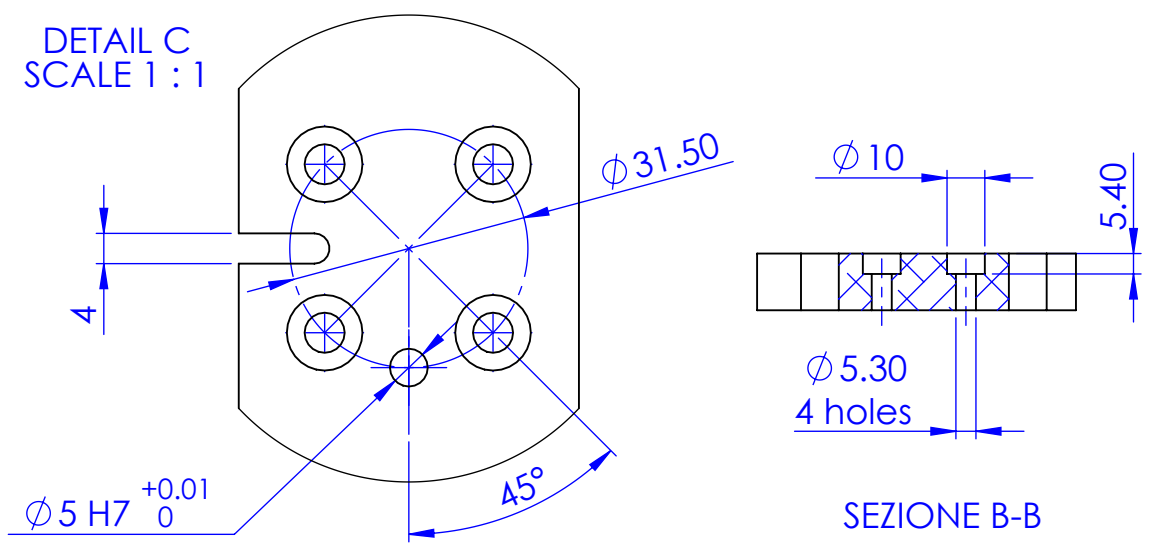
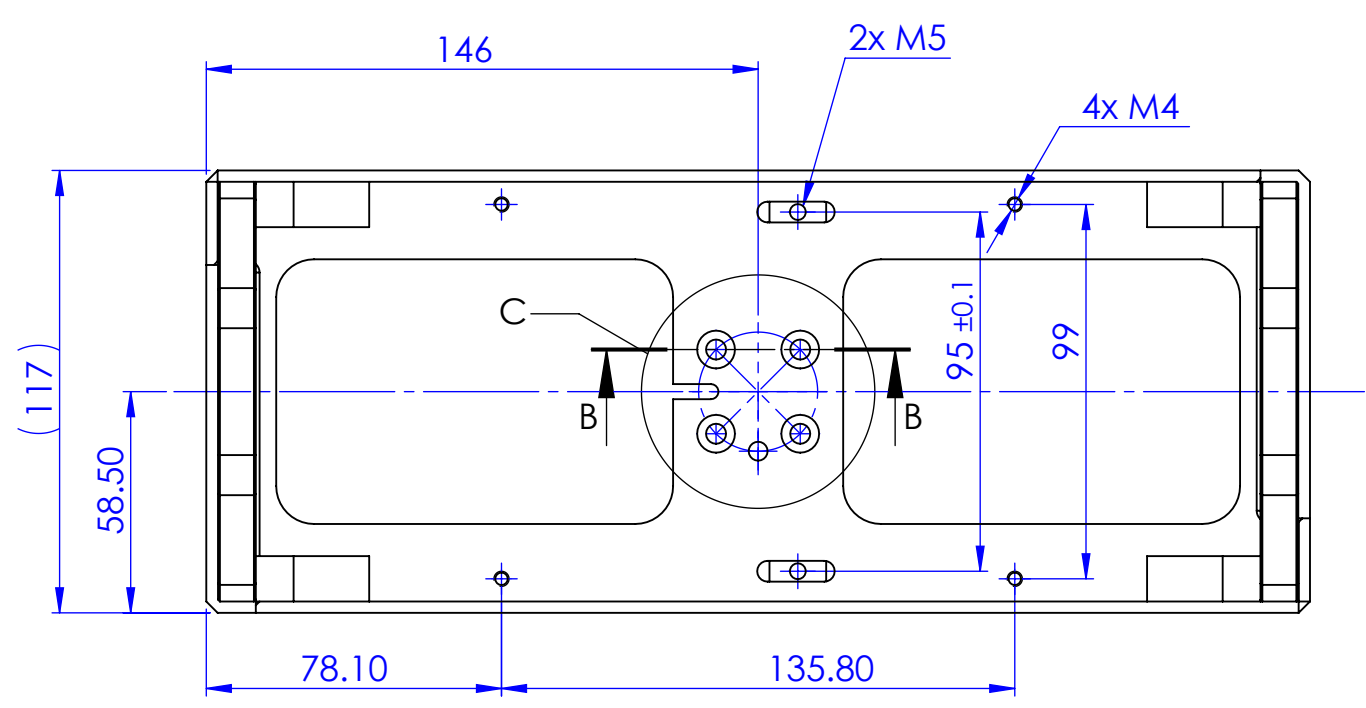
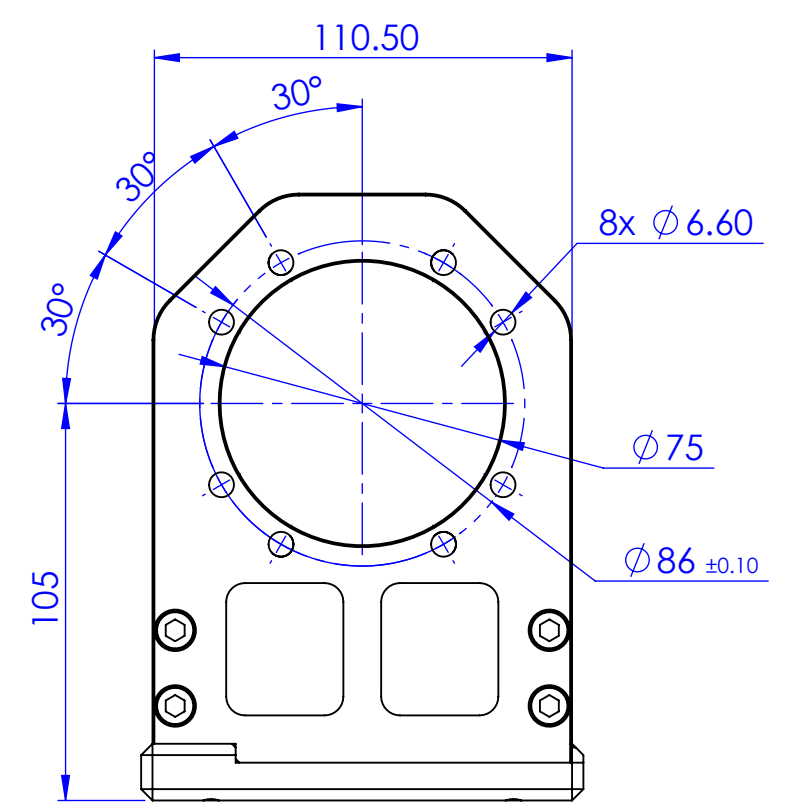
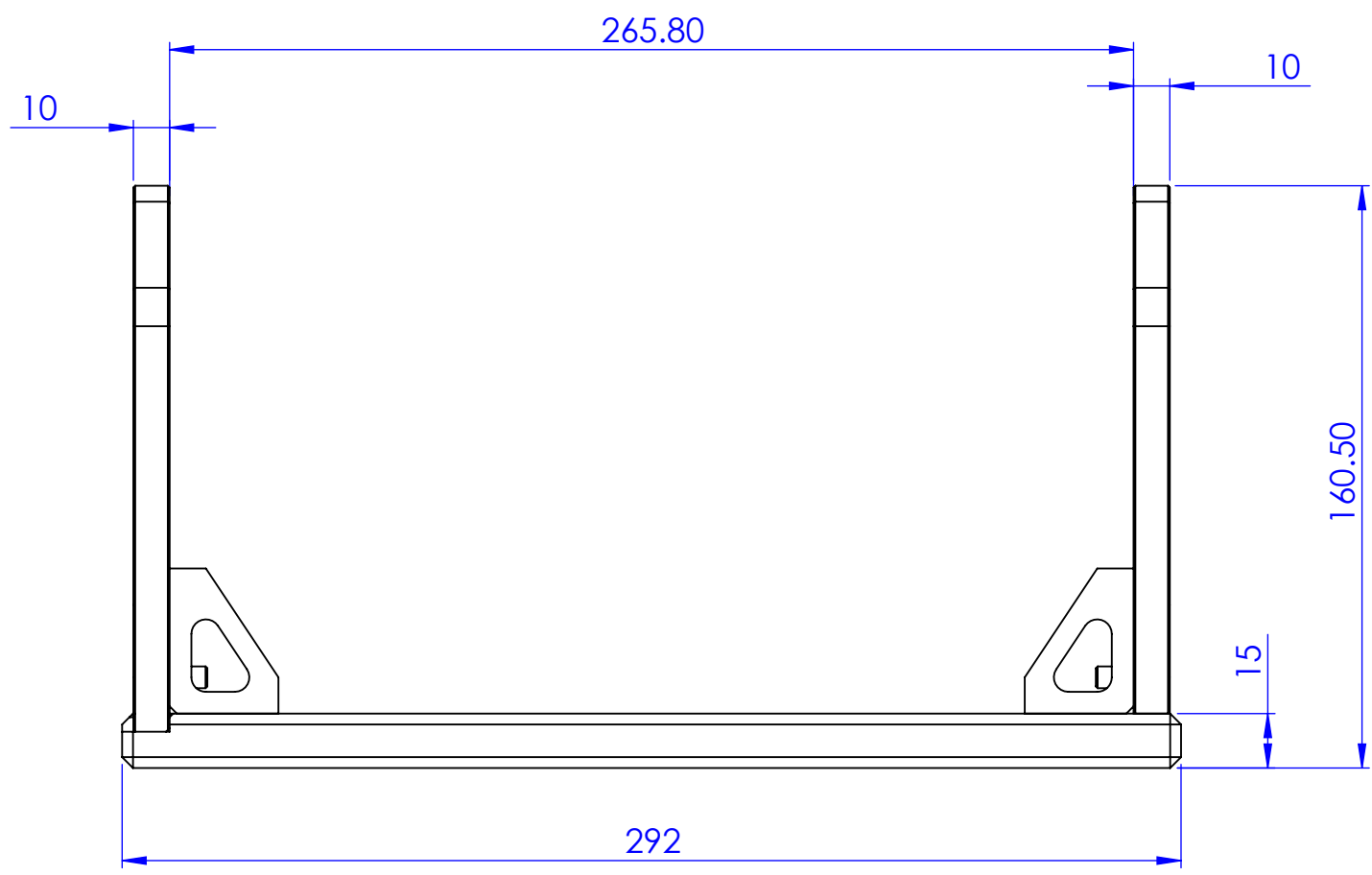


1 2 3 4 5 6 7 8



B
A

D
C
B
A

Material		N.A.		Mass		1307 g		Scale		1:2					
Surface treatment		N.A.		Part No.		CO25555									
Geometrical tolerance (ISO 2768-2)								Class		K		Description			
Linear tolerance (ISO 2768-2)								Class		m			CMHORBCR048		
0.5	>3÷	>6÷	>30÷	>120	>400÷	>1000	>2000	Undimensioned bevels	0.5x45°		Drawing No.				
±3	6	30	120	±400	±1000	±2000	±4000	Undimensioned radii	R 0.5			DP 25555-B			
±0.1	±0.1	±0.2	±0.3	±0.5	±0.8	±1.2	±2	Date		Name			Sheet		
								Designed		20/09/2016		Vasconetto		1/1	
								Drawn		08/03/2017		Rodella			
								Checked		29/09/2020		Rodella			
all dimensions are in mm OPTO ENGINEERING S.r.l. - Mantova, Italy - Tel. +39 0376699111 - www.opto-e.com															
Secret and confidential - All rights reserved - No copy, dissemination or circulation is allowed unless specifically authorized in writing by OPTO ENGINEERING S.r.l. - Any violation shall be legally prosecuted.															

1 2 3 4 5 6 7 8

0 1 2 3 4 5 6 7 8 9 10