

1 2 3 4 5 6 7 8

D

D

C

C

B

B

A

A

1

2

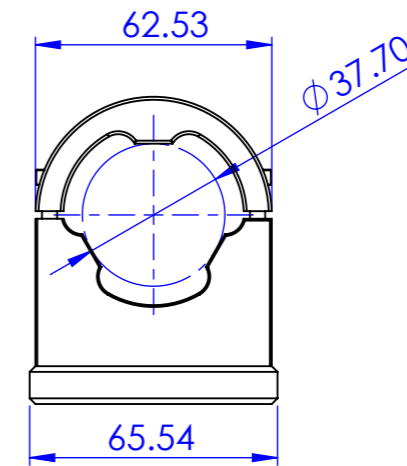
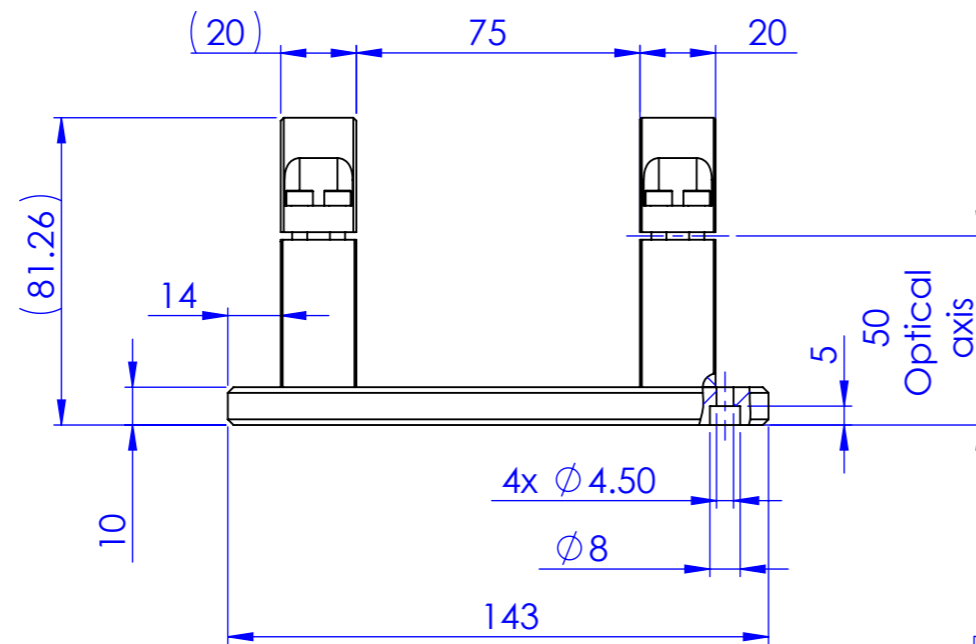
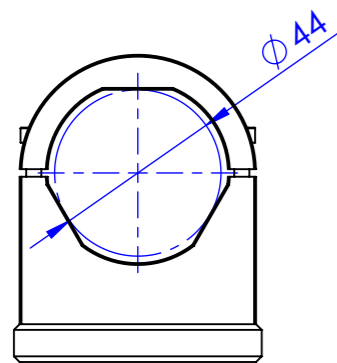
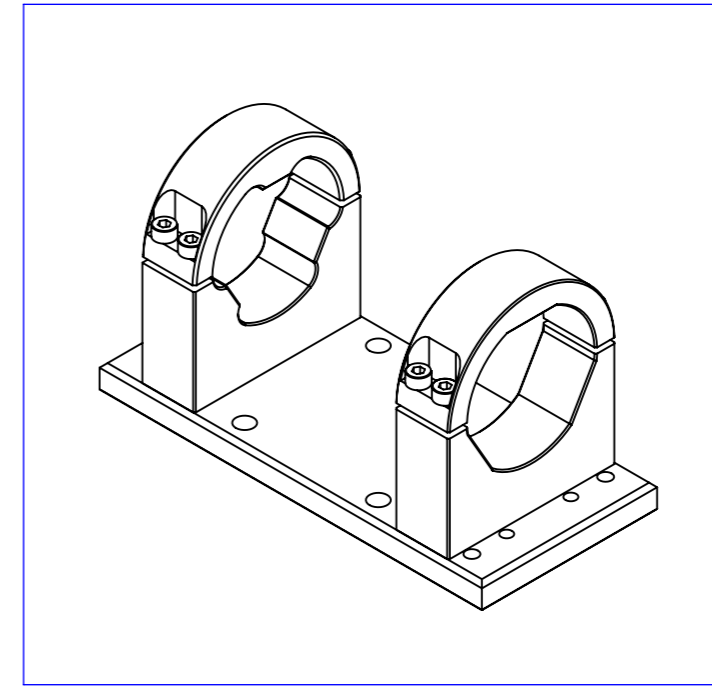
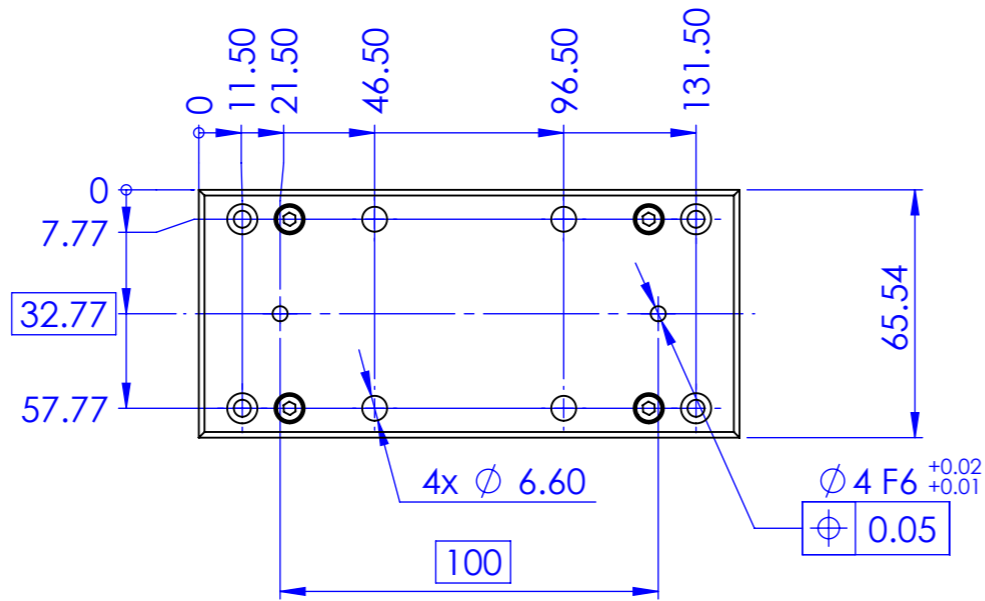
3

0 1 2 3 4 5 6 7 8 9 10

6

7

8



Material		N.A		Mass		506 g		Scale		1:2	
Surface treatment		Grey Satin Anodizing		Part No.		CO20102		Description		CMHOTC16M018	
Geometrical tolerance (ISO 2768-2)		Class		K		Undimensioned bevels		0.5x45°		Drawing No.	
Linear tolerance (ISO 2768-2)		Class		m		Undimensioned radii		R 0.5		Sheet	
0.5		>3±		>6±		>30±		>120		>400±	
±3		6		30		120		±400		1000	
±0.1		±0.1		±0.2		±0.3		±0.5		±0.8	
±0.1		±0.1		±0.2		±0.3		±0.5		±1.2	
±0.1		±0.1		±0.2		±0.3		±0.5		±2	
Date		Name		Drawing No.		Sheet		Date		Name	
Designed		26/10/2021		Rodella		1/1		26/10/2021		Rodella	
Drawn		26/10/2021		Rodella				26/10/2021		Rodella	
Checked		26/10/2021		Rodella				26/10/2021		Rodella	
OPTO ENGINEERING S.r.l. - Mantova, Italy - Tel. +39 0376699111 - www.opto-e.com											

all dimensions are in mm

Secret and confidential - All rights reserved - No copy, dissemination or circulation is allowed unless specifically authorized in writing by OPTO ENGINEERING S.r.l. - Any violation shall be legally prosecuted.