

1 2 3 4 5 6 7 8

D

D

C

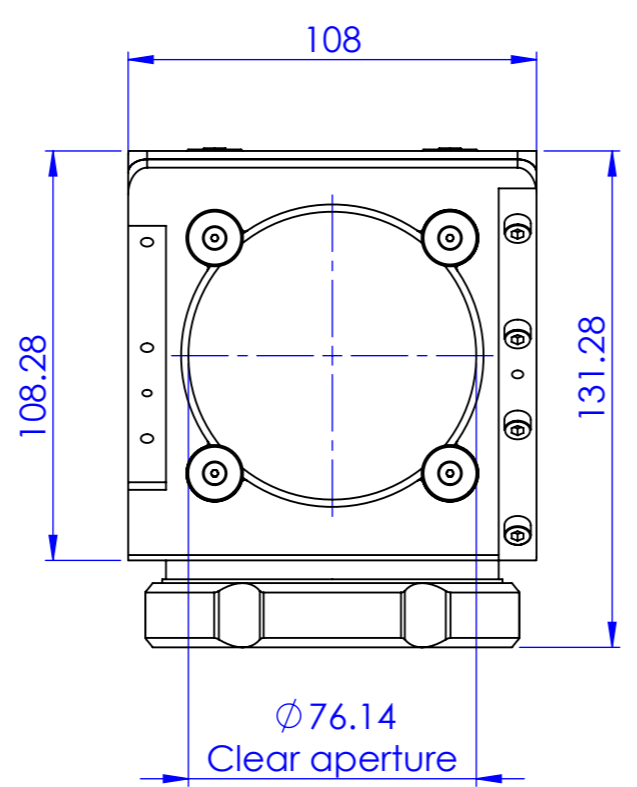
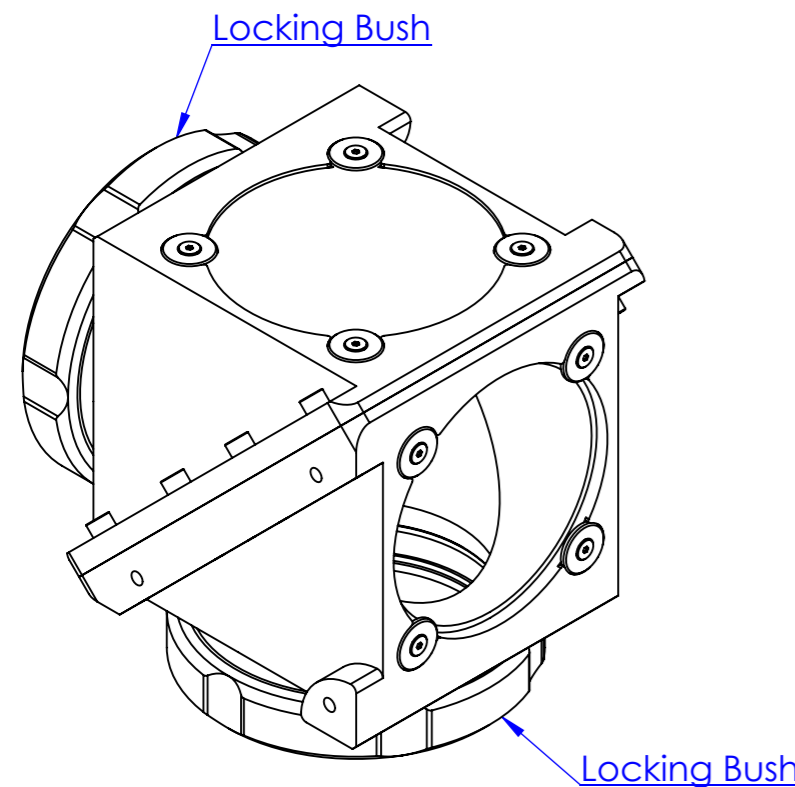
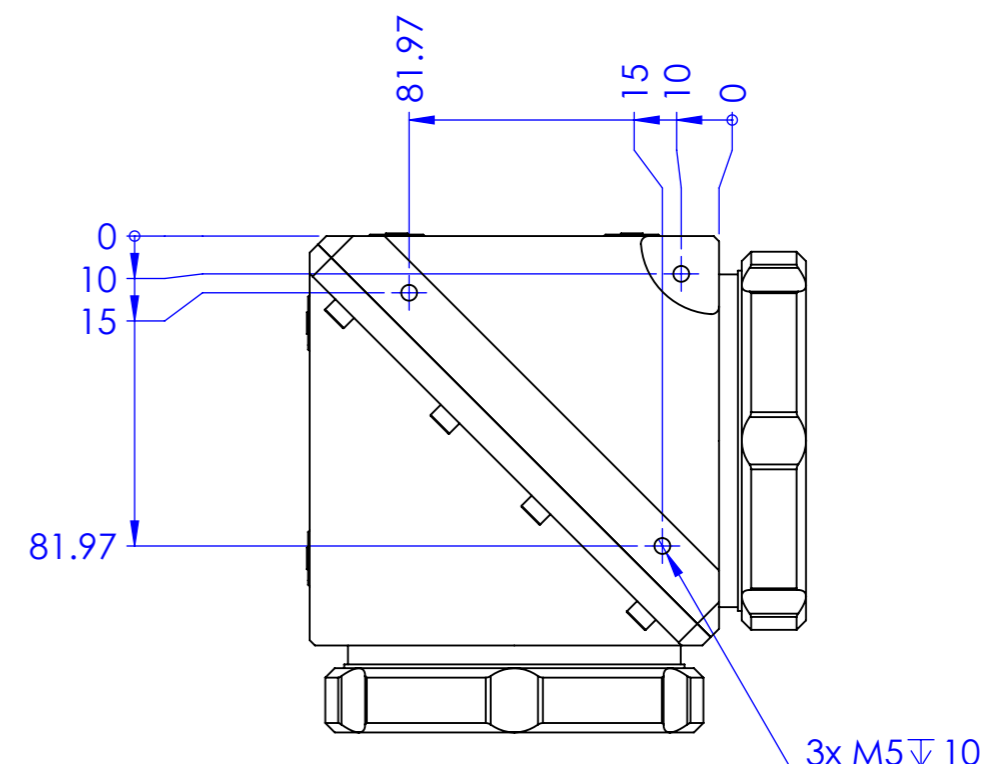
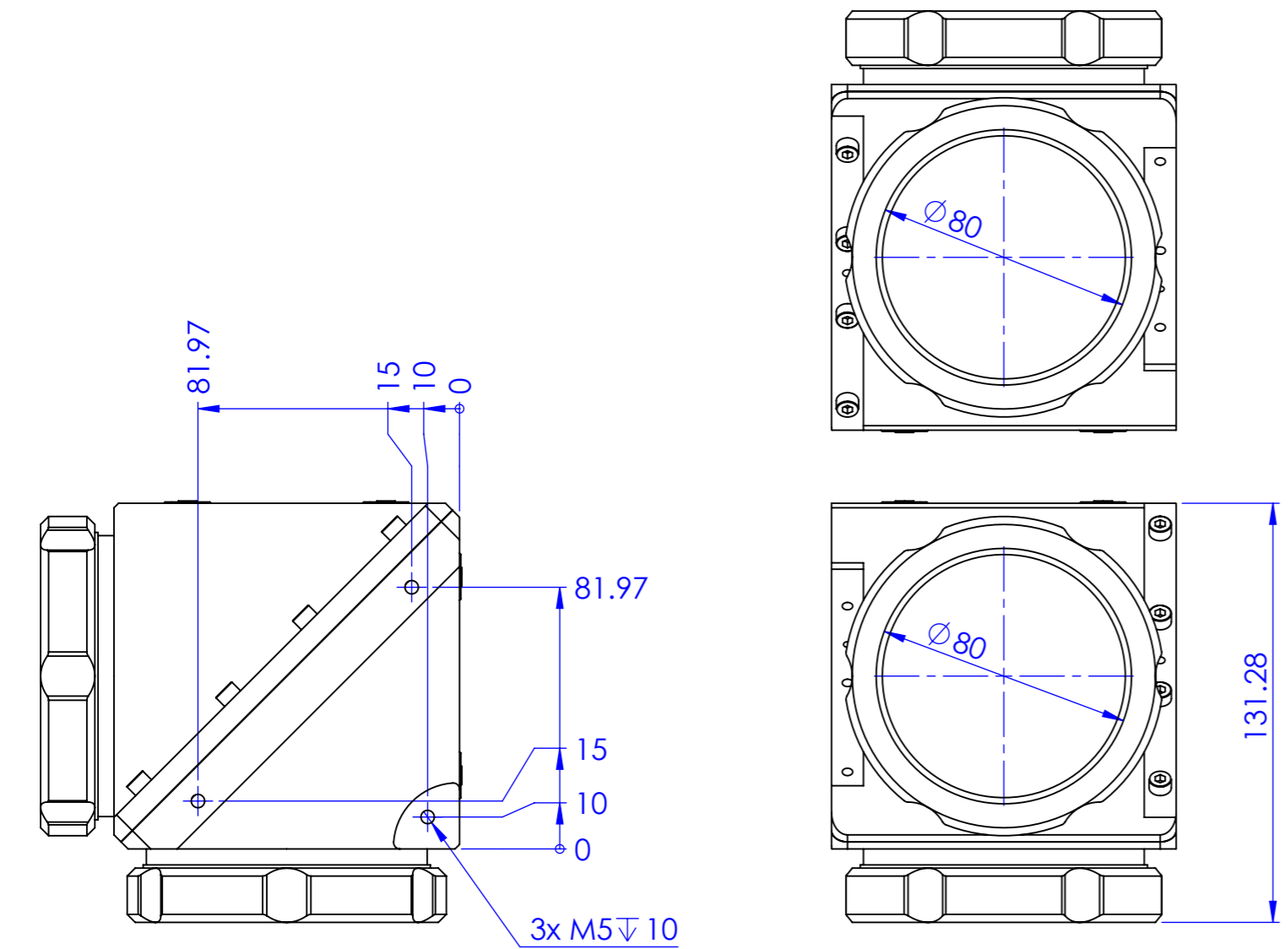
C

B

B

A

A



Material		N.A.		Mass		1402 g		Scale		1:2		
Surface treatment		N.A.		Part No.		CO22434						
Geometrical tolerance (ISO 2768-2)								Class		K		Description
Linear tolerance (ISO 2768-2)								Class		m		
0.5	>3	>6	>30	>120	>400	>1000	>2000	±3	±6	±30	±120	CMBS056
±0.1	±0.1	±0.2	±0.3	±0.5	±0.8	±1.2	±2	Undimensioned bevels		Undimensioned radii		
				Date		Name		Drawing No.		Sheet		
all dimensions are in mm OPTO ENGINEERING S.r.l. - Mantova, Italy - Tel. +39 0376699111 - www.opto-e.com				Designed		Santini		DP 22434-A		1/1		
				Drawn		LSantini		Secret and confidential - All rights reserved - No copy, dissemination or circulation is allowed unless specifically authorized in writing by OPTO ENGINEERING S.r.l. - Any violation shall be legally prosecuted.				
				Checked		Rodella						

1 2 3 4 5 6 7 8

0 1 2 3 4 5 6 7 8 9 10