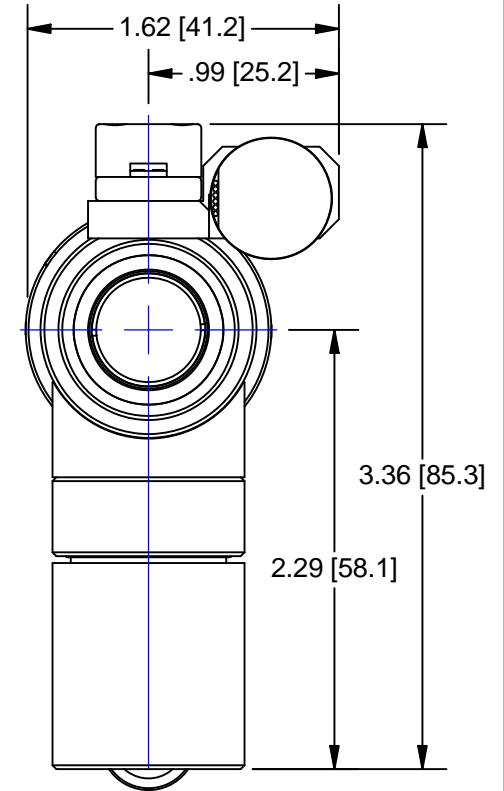
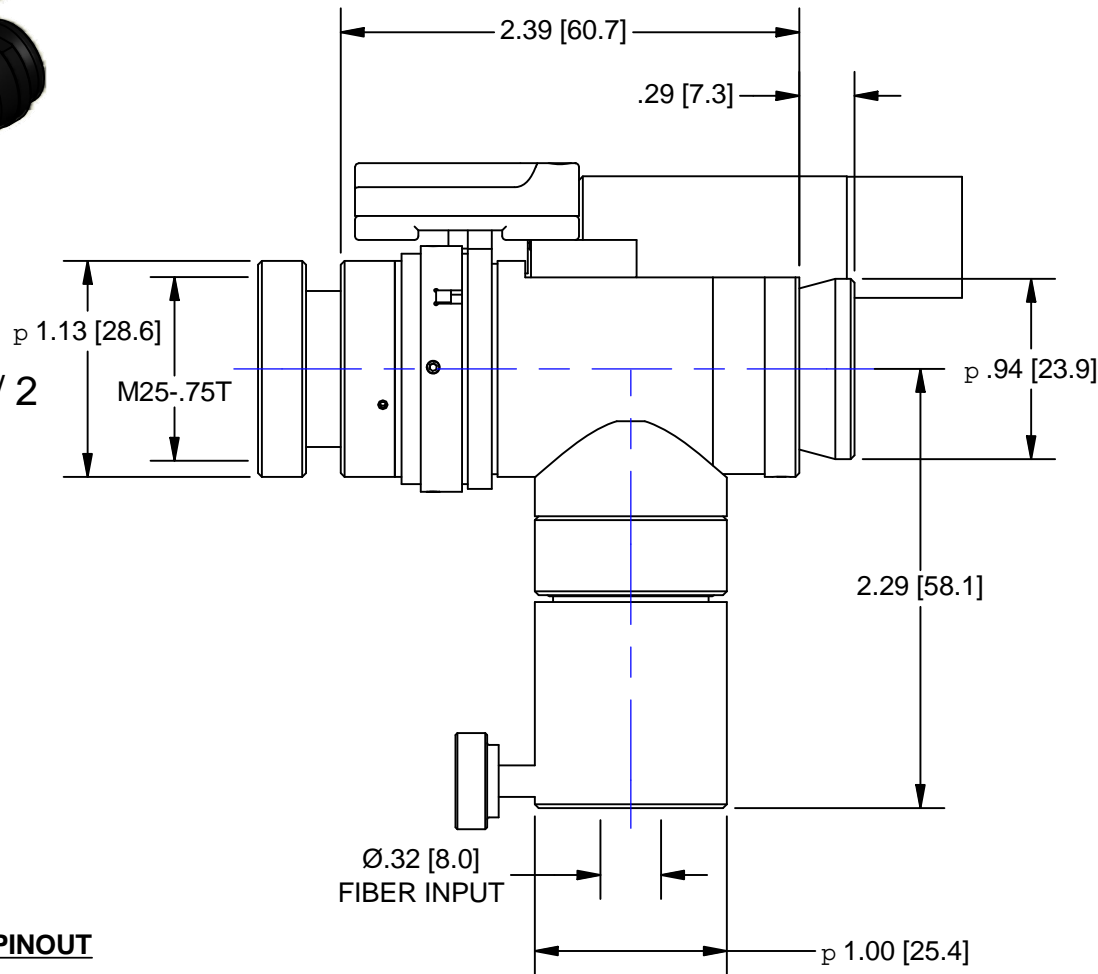


SCALE 1 / 2



# OUTLINE

## 2-PHASE MOTOR PINOUT

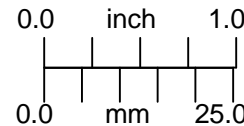
- PIN 3 = +5Vdc
- PIN13 = COMMON
- PIN 8 = FAR LIMIT
- PIN 12 = NEAR LIMIT
- PIN 1 = MOTOR A+
- PIN 7 = MOTOR A-
- PIN 6 = MOTOR B+
- PIN 11 = MOTOR B-

15 PIN HIGH DENSITY  
MALE D-SUB

UNLESS OTHERWISE SPECIFIED DIMENSIONS ARE IN INCHES [MM] AND INCLUDE CHEMICALLY APPLIED OR PLATED FINISHES	
SCALE:	1:1
WEIGHT:	N/A
DR BY:	R. PODLENA
CH BY:	B.EVANS
PROJECT #:	E2609
DATE DR:	11/04/2009

### PROPRIETARY AND CONFIDENTIAL

THE INFORMATION CONTAINED IN THIS  
DRAWING IS THE SOLE PROPERTY OF  
NAVITAR. ANY REPRODUCTION IN PART  
OR AS A WHOLE WITHOUT THE WRITTEN  
PERMISSION OF NAVITAR IS PROHIBITED.



DO NOT SCALE DRAWING



ULTRA-PE w/CX & MTR(DC ENC) 3mm  
FF & LS(HE)

SIZE  
**A**

**1-63983**  
SHEET 2 OF 2

REV  
**A**