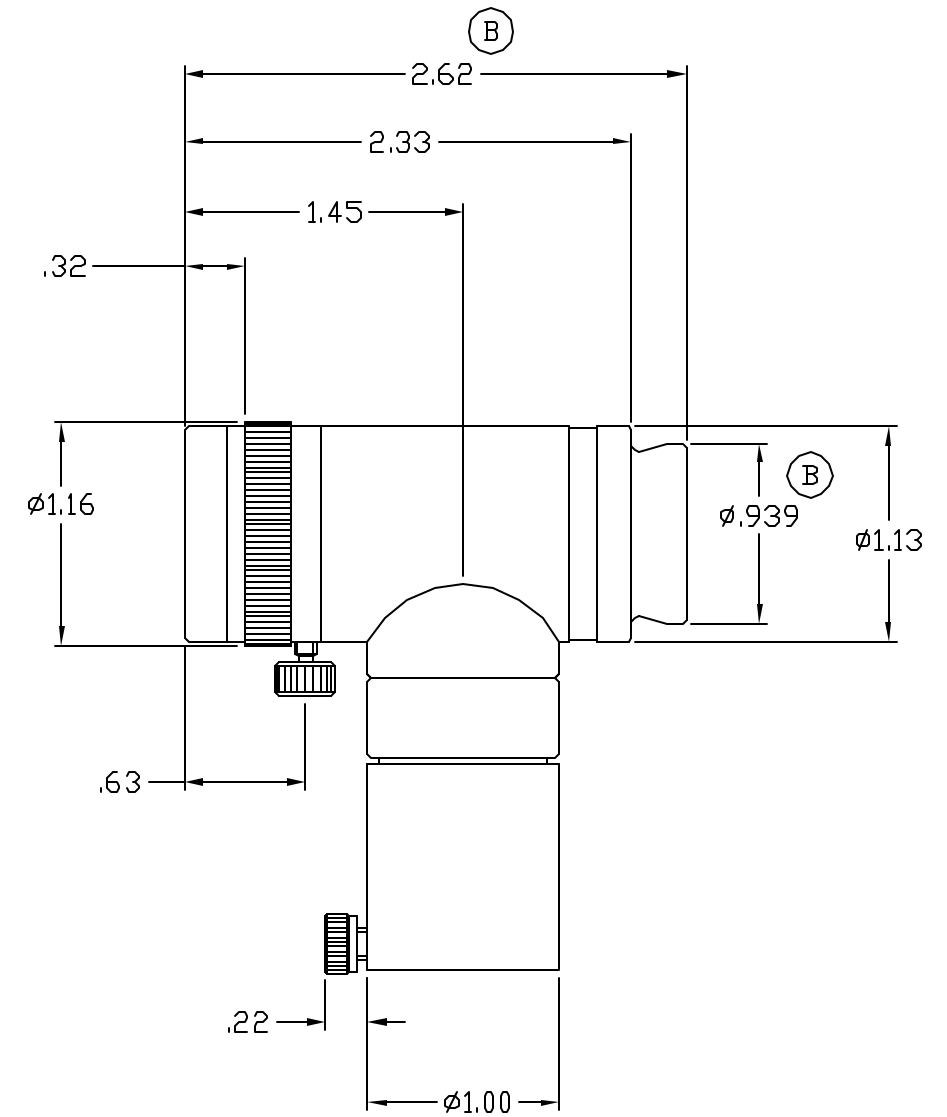
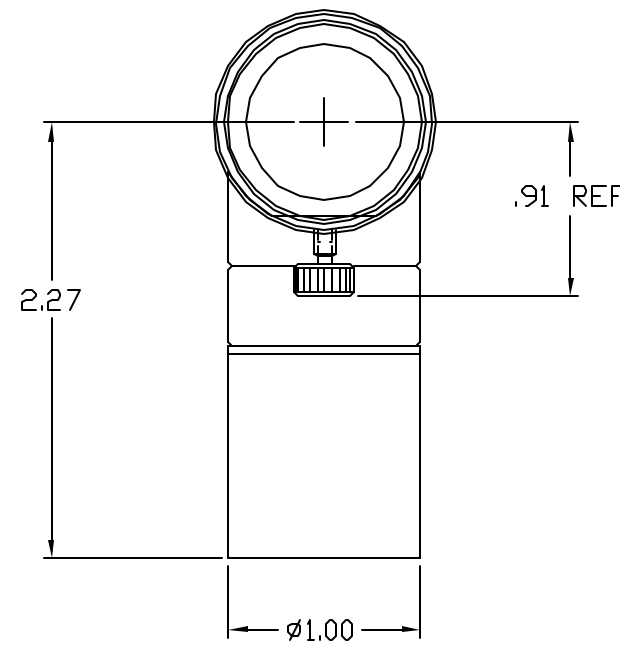
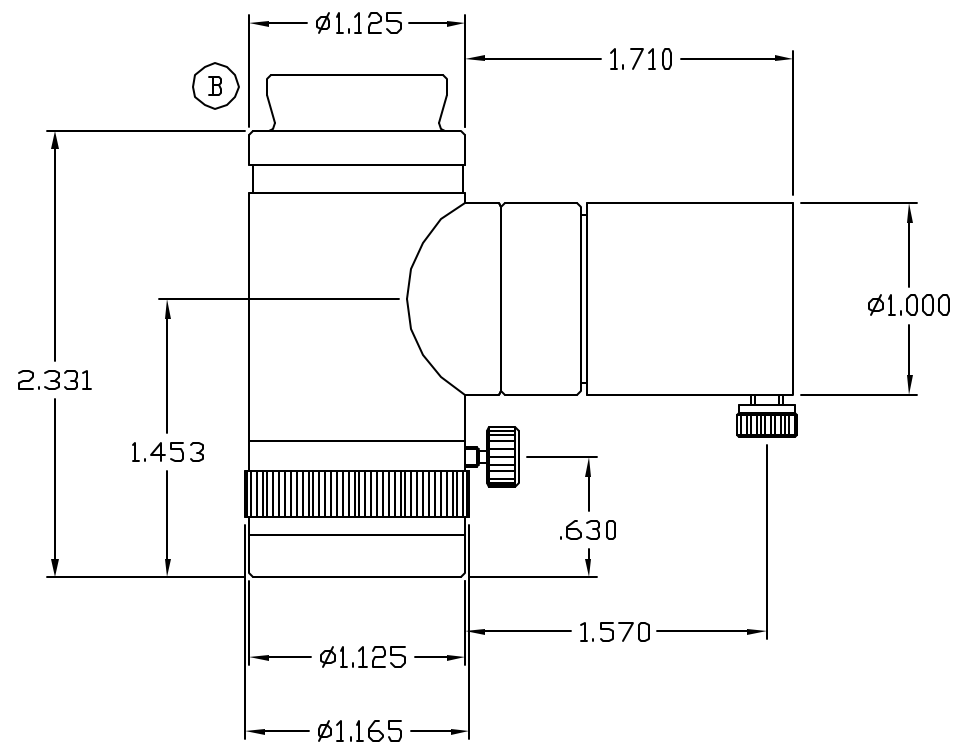


| REV | CHANGE RECORD AND DATE | CH |
|-----|------------------------|----|
| A | RELEASE 6-23-99 | - |
| B | ECO #990957 12-3-99 | JK |



NEXT ASSY.

USED ON

1-61446-0L

| | | | | | | |
|--|---|----------|--|---------|-------------------------------------|-----------|
| MATERIAL | UNLESS OTHERWISE SPECIFIED DIMENSIONS ARE IN INCHES AND INCLUDE CHEMICALLY APPLIED OR PLATED FINISHES | | P/N Suffix Definition -1 Conversion Coating -2 Painting -3 Marking -R Rework | | | |
| | TOLERANCES AS FOLLOWS | | | | | SCALE 1:1 |
| FINISH | DEC. .XXX | ±.005 | DR. | JK | | |
| | DEC. .XX | ±.010 | CH. | - | | |
| CHAMFER ALL THREADS 30° TO ROOT DIAM. | FRACT. | ±1/64 | APP. | PB | SIZE B 1-61446-0L SHT. 1 OF 1 | |
| | ANGLES | ±30° | DATE DR. | 6-16-99 | | REV B |
| | CONCENTRICITY | .003 TIR | DO NOT SCALE DRAWING | | | |
| | BREAK ALL SHARP EDGES .005 MIN. .010 MAX. | | | | | |
| | MAX. SURF. ROUGHNESS | 32 | | | | |

SPLITTER/LENS ASSY
w. F.F. & COAX ILLUM.