

TCCR2M120-C

Telecentric CORE lens for 1" detectors, magnification 0.104 x, C

SPECIFICATIONS

Part number	TCCR2M120-C	
Magnification	(x)	0.104
Image shape dimension (8)	(\emptyset , x mm)	$\emptyset=16.4$, x=13.4
Phase adjustment (7)	Yes	

Object field of view 7

with IMX174/IMX249 13.3 mm diag w x h 11.35 x 7.13	(mm x mm)	108.7 x 68.3
with KAI-2020 14.8 mm diagonal w x h 11.84 x 8.88	(mm x mm)	113.8 x 85.4
with IMX253/IMX304 17.6 mm diag w x h 14.16 x 10.37	(mm x mm)	$\emptyset=158$, x=100
with KAI-4022/4021 21.5 mm diagonal w x h 15.2 x 15.2	(mm x mm)	$\emptyset=158$, x=129
with KAI-08050 22.6 mm diagonal w x h 18.1 x 13.6	(mm x mm)	$\emptyset=158$, x=129

Optical specifications

Working distance (1)	(mm)	334.6
wF/# (2)	16	
Telecentricity typical (max) (3)	(deg)	< 0.06 (0.10)
Distortion typical (max) (4)	(%)	< 0.08 (0.10)
Field depth (5)	(mm)	122.0
CTF@ 50 lp/mm	(%)	> 40

Mechanical specifications

Mount (6)	C	
A	(mm)	182
B	(mm)	220
C	(mm)	258
Mass	(g)	9226

Compatibility

LTCLCR120-x, LTCLHP120-x

Last update: 2019-05-10

In case of use with sensors larger than 1" please check the exact FOV dimensions with our sales engineers

NOTES

- Working distance: distance between the front end of the mechanics and the object. Set this distance within +/- 3% of the nominal value for maximum resolution and minimum distortion.
- Working F-number (wF/#): the real F-number of a lens when used as a macro. Lenses with smaller apertures can be supplied on request.
- Maximum slope of chief rays inside the lens: when converted to milliradians, it gives the maximum measurement error for any millimeter of object displacement. Typical (average production) values and maximum (guaranteed) values are listed.
- Percent deviation of the real image compared to an ideal, undistorted image: typical (average production) values and maximum (guaranteed) values are listed.
- At the borders of the field depth the image can be still used for measurement but, to get a perfectly sharp image, only half of the nominal field depth should be considered. Pixel size used for calculation is 5.5 μ m.
- In case of vignetting, FOV dimensions are indicated with " \emptyset = , x = ", where " \emptyset =" stands for diameter and "x=" indicates the nominal FOV height and length (see [Tech Info](#) for related drawing).
- Indicates the availability of an integrated camera phase adjustment feature.
- Indicates the dimensions and shape of image, where " \emptyset =" stands for diameter and "x=" indicates the nominal image height and length (see [Tech Info](#) for related drawing)

COMPATIBLE PRODUCTS

Despite the efforts made to generate an error-free compatibility list, we always recommend to consult the Opto Engineering® technical support department before purchasing a compatible product. Opto Engineering® shall not be liable for any damage or malfunctioning caused by the incorrect selection of a

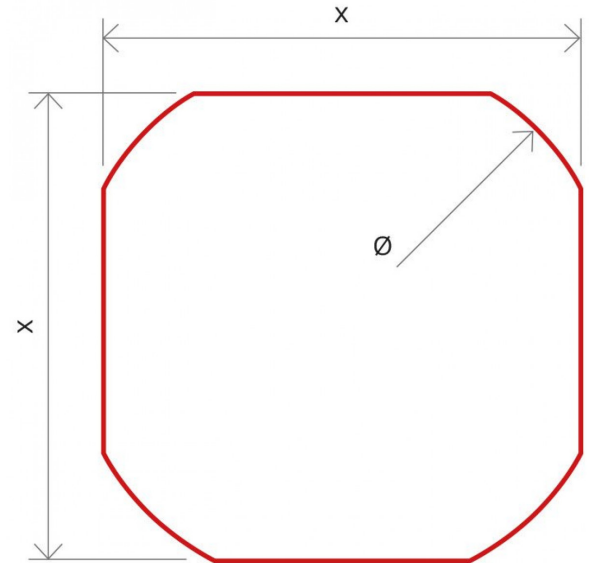
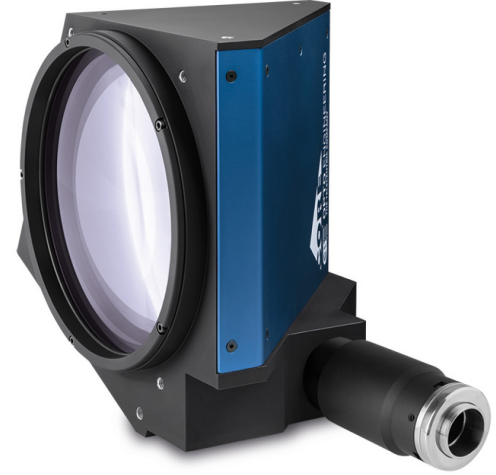


Image shape dimensions (\emptyset , x)

All product specifications and data are subject to change without notice to improve reliability, functionality, design or other. Photos and pictures are for illustration purposes only.

compatible product.



LTCLHP series

High-performance telecentric illuminators

LTCLHP120-R	Telecentric HP illuminator, beam diameter 150 mm, red
LTCLHP120-G	Telecentric HP illuminator, beam diameter 150 mm, green
LTCLHP120-W	Telecentric HP illuminator, beam diameter 150 mm, white



LTCLHP CORE series

Ultra compact telecentric illuminators

LTCLCR120-R	Telecentric CORE illuminator, beam dimensions $\varnothing = 156$, $x = 130$, red, 630 nm
LTCLCR120-G	Telecentric CORE illuminator, beam dimensions $\varnothing = 156$, $x = 130$, green, 520 nm
LTCLCR120-W	Telecentric CORE illuminator, beam dimensions $\varnothing = 156$, $x = 130$, white



LTBC series

Continuous LED backlight

LTBC174174-W	Continuous LED backlight, 174x174 illumination area, white
LTBC174174-G	Continuous LED backlight, 174x174 illumination area, green



mvBlueFOX3-2 series

USB3 vision camera with Sony Pregius CMOS sensors

RT-mvBF3-2024a	USB3 Vision camera with Sony Pregius CMOS sensor IMX249
RT-mvBF3-2024	USB3 Vision camera with Sony Pregius CMOS sensor IMX174
RT-mvBF3-2089a	USB3 Vision camera with Sony Pregius CMOS sensor IMX267
RT-mvBF3-2089	USB3 Vision camera with Sony Pregius CMOS sensor IMX255



mvBlueCOUGAR series

GigE & Dual GigE Vision cameras

RT-mvBC-X104f	Camera with interface GigE (1GB/s), sensor size 1/1.2", mpixel 2.35, resolution 1936 x 1216, sensor name IMX249, sensor type CMOS
RT-mvBC-XD104d	Camera with interface Dual GigE (2GB/s), sensor size 1/1.2", mpixel 2.35, resolution 1936 x 1214, sensor name IMX174, sensor type CMOS
RT-mvBC-X109b	Camera with interface GigE (1GB/s), sensor size 1", mpixel 8.95, resolution 4112 x 2176, sensor name IMX267, sensor type CMOS
RT-mvBC-XD109b	Camera with interface Dual GigE (2GB/s), sensor size 1", mpixel 8.95, resolution 4112 x 2176, sensor name IMX267, sensor type CMOS



TCLIB Suite

Software library & stand-alone tools for the optimization of telecentric setups

TCLIB-01	Software library & stand-alone tools for the optimization of telecentric setups
----------	---



COE HR AS-X series

20MP, 26MP and 29MP area scan cameras for high-speed applications

COE-200-M-POE-070-IR-C	HR Area Scan camera IMX183, CMOS, Rolling shutter, 5472 x 3648, 20.4 MP, 2.4 pix, 1", Gray, GigE, 6 fps, POE, C - mount, Glass filter
COE-200-C-POE-070-IR-C	HR Area Scan camera IMX183, CMOS, Rolling shutter, 5472 x 3648, 20.4 MP, 2.4 pix, 1", Color, GigE, 6 fps, POE, C - mount, Infrared cut filter
COE-200-M-USB-070-IR-C	HR Area Scan camera IMX183, CMOS, Rolling shutter, 5472 x 3648, 20.4 MP, 2.4 pix, 1", Gray, 14 fps, C - mount, Glass filter
COE-200-C-USB-070-IR-C	HR Area Scan camera IMX183, CMOS, Rolling shutter, 5472 x 3648, 20.4 MP, 2.4 pix, 1", Color, 14 fps, C - mount, Infrared cut filter