

TC12M064-F

High resolution telecentric lenses, magnification 0.465, WD 157.6

SPECIFICATIONS

Magnification	(x)	0.465
Image circle Ø	(mm)	33.5

Object field of view

with PYTHON 26.07 mm diagonal w x h 18.43 x 18.43	(mm x mm)	39.64 x 39.64
with APS-C CMV12000 28.16 mm diagonal w x h 22.53 x 16.90	(mm x mm)	48.45 x 36.34
with line - 4k detector 4k x 7 µm 28.67	(mm)	61.66
with APS-H PYTHON 32.58 mm diagonal w x h 23.4 x 23.4	(mm x mm)	49.55 x 49.55
with APS-H KAI-16050 32.4 mm diagonal w x h 26.93 x 17.95	(mm x mm)	57.91 x 38.61

Optical specifications

Working distance (1)	(mm)	157.6
wF/# (2)		11
Telecentricity typical (max) (3)	(deg)	<0.08 (0.10)
Distortion typical (max) (4)	(%)	<0.08 (0.10)
Field depth (5)	(mm)	4.2
CTF@ 50 lp/mm	(%)	>45

Mechanical specifications

Mount (6)		F
Phase adjustment		Yes
Length (7)	(mm)	353.5
Diameter	(mm)	100.0
Mass	(g)	1347

Last update: 2019-11-13

NOTES

- Working distance: distance between the front end of the mechanics and the object. Set this distance within +/- 3% of the nominal value for maximum resolution and minimum distortion.
- Working F/#: the real F/# of a lens when used as a macro. Lenses with smaller apertures can be supplied on request.
- Maximum slope of chief rays inside the lens: when converted to milliradians, it gives the maximum measurement error for any millimeter of object displacement. Typical (average production) values and maximum (guaranteed) values are listed.
- Percent deviation of the real image compared to an ideal, undistorted image: typical (average production) values and maximum (guaranteed) values are listed.
- At the borders of the field depth the image can be still used for measurement but, to get a very sharp image, only half of the nominal field depth should be considered. Pixel size used for calculation is 5.5 µm.
- FD stands for Flange Distance (in mm), defined as the distance from the mounting flange (the "metal ring" in rear part of the lens) to the camera detector plane.
- Measured from the front end of the mechanics to the camera flange.

COMPATIBLE PRODUCTS

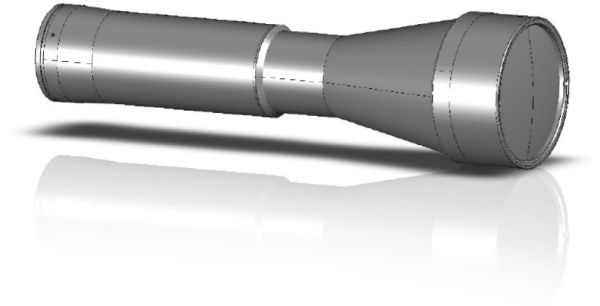
Despite the efforts made to generate an error-free compatibility list, we always recommend to consult the Opto Engineering® technical support department before purchasing a compatible product. Opto Engineering® shall not be liable for any damage or malfunctioning caused by the incorrect selection of a compatible product.



LTCLHP series

High-performance telecentric illuminators

LTCLHP064-R	Telecentric HP illuminator, beam diameter 80 mm, red
LTCLHP064-G	Telecentric HP illuminator, beam diameter 80 mm, green
LTCLHP064-B	Telecentric HP illuminator, beam diameter 80 mm, blue



3D preview

All product specifications and data are subject to change without notice to improve reliability, functionality, design or other. Photos and pictures are for illustration purposes only.

LTCLHP064-W Telecentric HP illuminator, beam diameter 80 mm, white



LTCLHP CORE series

Ultra compact telecentric illuminators

LTCLCR064-R Telecentric CORE illuminator, beam dimensions $\varnothing = 86$; $x = 67$, red

LTCLCR064-G Telecentric CORE illuminator, beam dimensions $\varnothing = 86$; $x = 67$, green

LTCLCR064-W Telecentric CORE illuminator, beam dimensions $\varnothing = 86$; $x = 67$, white



LTLA series

High-power strobed LED low angle diffused ringlights

LTLAC1-W Diffusive strobed low angle ring light illuminator - large size medium power white

LTLAC2-R Diffusive strobed low angle ring light illuminator - large size high power red

LTLAC2-G Diffusive strobed low angle ring light illuminator - large size high power green

LTLAC2-W Diffusive strobed low angle ring light illuminator - large size high power white



LTRNST series

LED ring illuminators - straight type

LTRN064RD Ring LED illuminator, inner diameter 100 mm, straight type, red 630 nm

LTRN064GR Ring LED illuminator, inner diameter 100 mm, straight type, green 525 nm

LTRN064BL Ring LED illuminator, inner diameter 100 mm, straight type, blue 470 nm

LTRN064NW Ring LED illuminator, inner diameter 100 mm, straight type, white



LTBC series

Continuous LED backlight

LTBC114114-W Continuous LED backlight, 114x114 illumination area, white

LTBC114114-G Continuous LED backlight, 114x114 illumination area, green



WI series

Protective windows

WI064 Protective window for 100 mm clamping diameter optics



COE HR AS-X series

20MP, 26MP and 29MP area scan cameras for high-speed applications

COE-260-M-10GIGE-100-IR-F HR Area Scan camera PYTHON 25K, CMOS, 5120 × 5120, 26 MP, 4.5 pix, APS-H, Gray, 10GigE, 40 fps, F - mount, Glass filter

COE-260-M-10GIGE-100-IR-I HR Area Scan camera PYTHON 25K, CMOS, 5120 × 5120, 26 MP, 4.5 pix, APS-H, Gray, 10GigE, 40 fps, M58x0.75 - mount, Glass filter
